

Telescope control with Stellarium

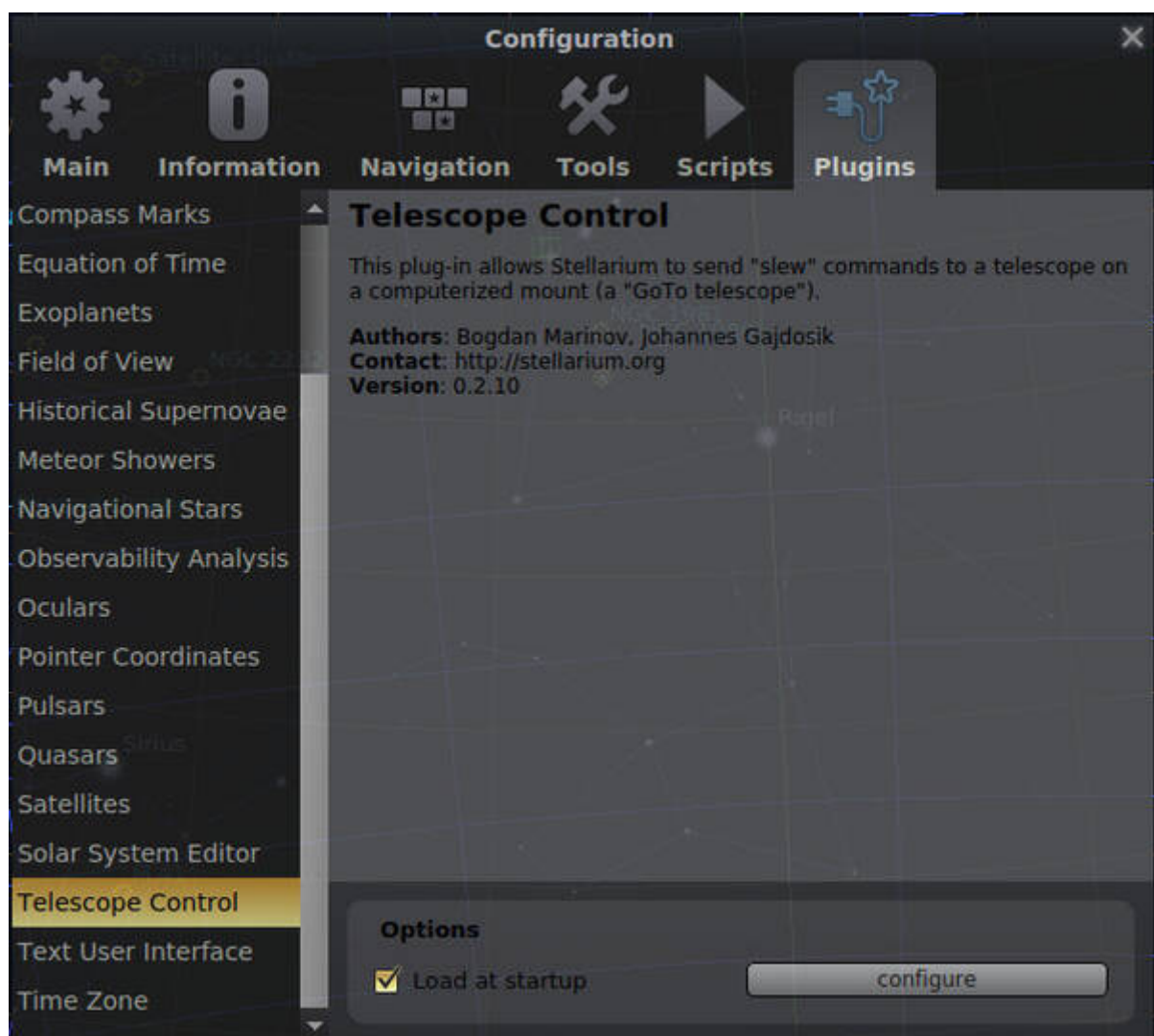
Stellarium can be connected to the OST. In this way, it is possible to send guiding commands to the telescope.

Please note: Simultaneous connections of *Stellarium*, *MaximDL*, or the *10 micron Virtual Keypad* to the telescope are not possible!!! Only one can be connected to the telescope at a time.

Establish the connection

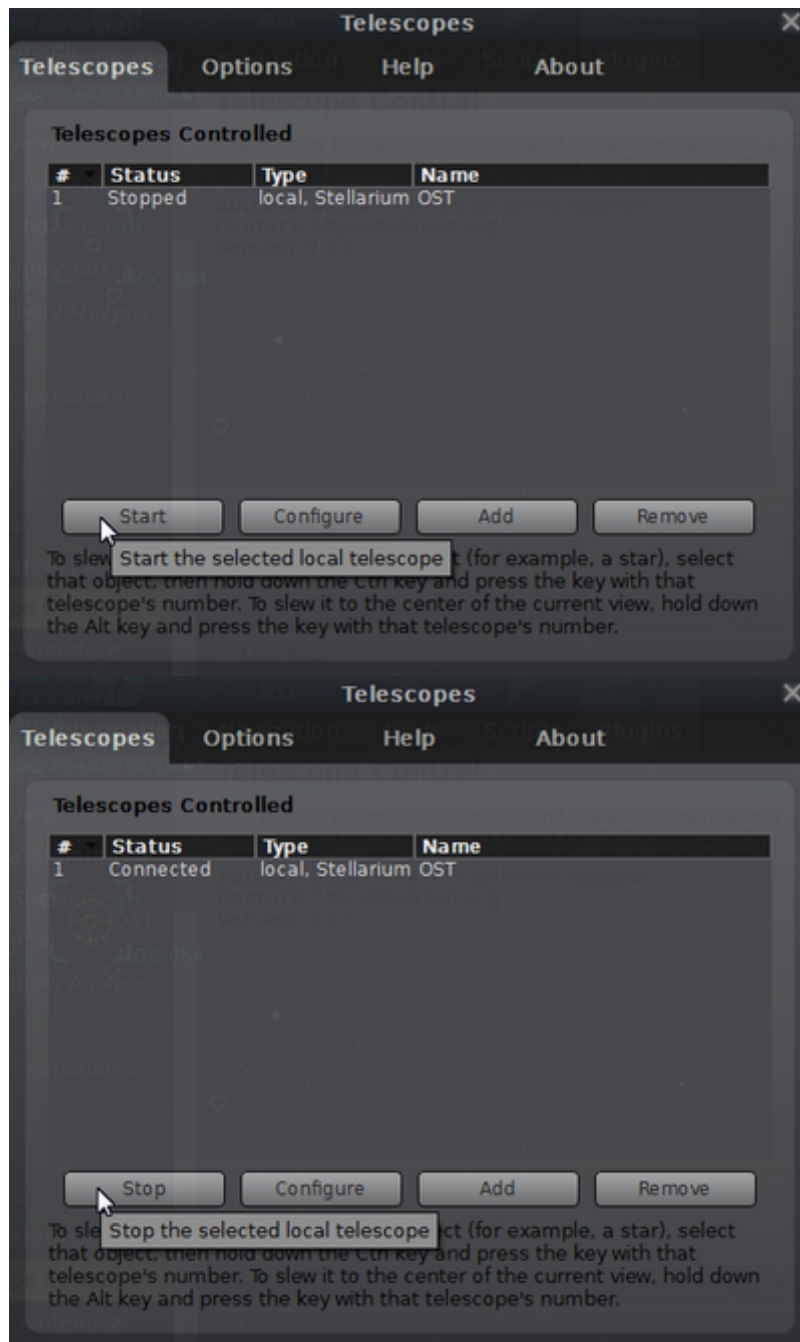
First step

First, connect *Stellarium* to the telescope. For this purpose, hit the F2 key or move the mouse pointer to the left edge and click on the tool symbol. Afterwards, click on Plugins and then on Telescope Control. Then click on configure.



Second step

Initiate the connection procedure between *Stellarium* and the OST with a click on Start.



Third step

After the connection has been established, the Status notification should depict **Connected**. The menu can then be closed and *Stellarium* is ready to move the telescope to different objects.

The menu can then be closed. *Stellarium* can now be used to move the telescope to different objects by hitting key sequence STRG+1.

Point the telescope to individual objects



The current pointing of the OST is illustrated with a red crosshair on the celestial sphere. An object must first be selected with the mouse pointer.

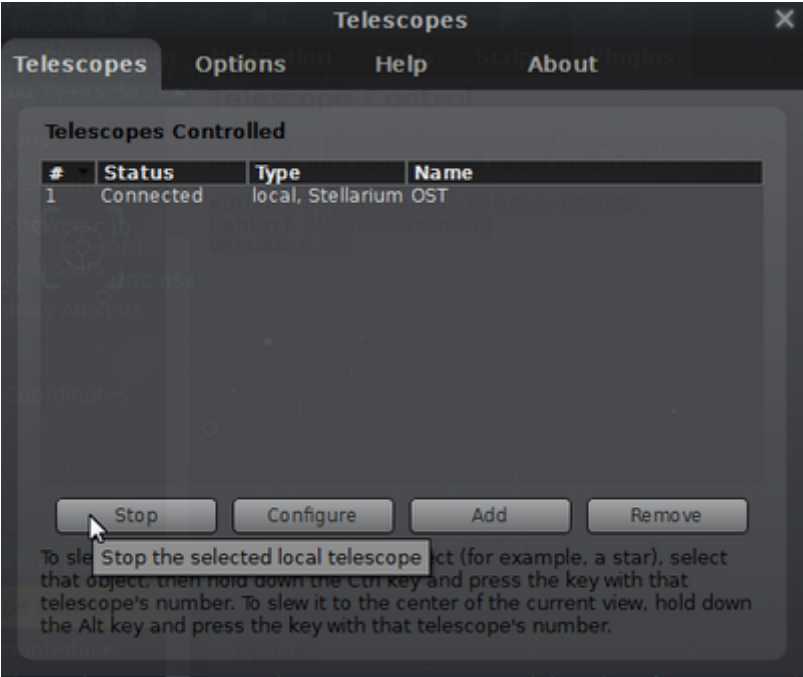


Afterwards, the telescope can be directed to this object by hitting the key sequence STRG+1 (STRG simultaneously with 1).



Close the connection

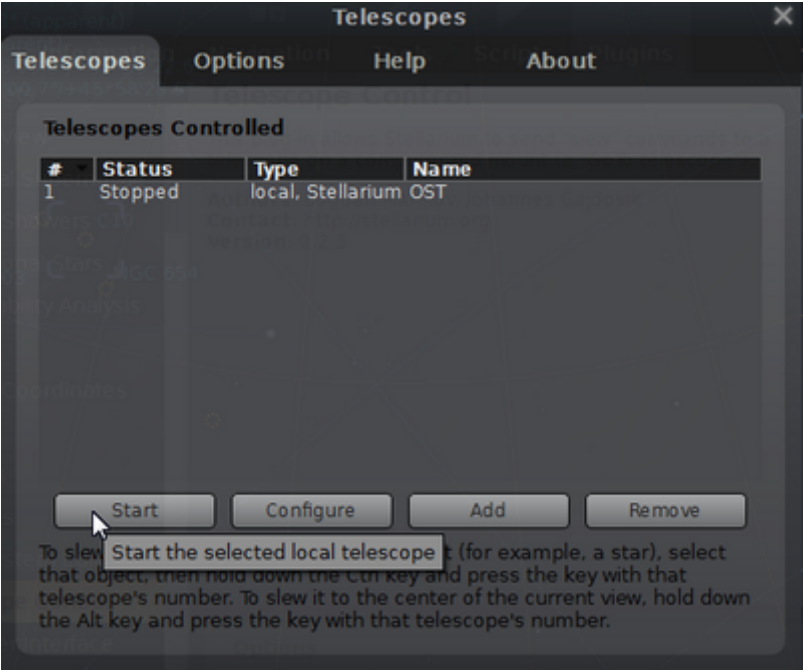
Repeat the first step from above but now click on Stop instead of Start.



The Status notification should then depict **Stopped**.

Configuration

Repeat the first and second step from above. Afterwards click on Configure.



The current settings are:

Configure Telescope

Telescope controlled by:

- ☒ Stellarium, directly through a serial port
- ☐ External software or a remote computer
- ☐ Nothing, just simulate one (a moving reticle)

Telescope properties

Name:

Connection delay:

Coordinate system:

- ☐ J2000 (default)
- ☒ Equinox of the date (JNow)

☐ Start/connect at startup

Device settings

Serial port:

Device model:

Any telescope or telescope mount compatible with Meade LX200.

Connection settings

Host: TCP port:

User interface settings

☐ Use field of view indicators

Circle size(s):

OK Cancel

From:

<http://141.89.178.218/wiki/> - **OST Wiki**

Permanent link:

<http://141.89.178.218/wiki/doku.php?id=en:ost:stellarium>

Last update: **2021/06/15 15:08**

