

Access to the laboratory computer

The analysis of the data obtained within the scope of the laboratory courses can either be done from your computer at home or directly at our laboratory computer after previous date arrangement.

External Login by SSH

The remote analysis of the data can be done in the computer pool at the physic institute or at your home computer with internet access.

```
User:      ma1
Password:  is given in the seminar
```

ma1 is given here as an example and must be replaced by the corresponding group name. The password can also be obtained from the supervisors.

Linux / Unix

Since the computers in the astrophysics are all operated with Linux, it's easy to log in from another computer with the same operating system. So you can do the complete evaluation from distance by logging in with a normal SSH connection on our laboratory computer. This also works for graphical output (i.e. view FITS files or text editors), but the performance crucially depends on the connection speed. In the computer pool at the university this is no problem but with a connection at home the speed may be low.

Login in the console with this command:

```
ssh -X ma1@a12.astro.physik.uni-potsdam.de
```

ma1 is given here as an example and must be replaced by the corresponding group name. You will be asked for the password. The parameter **-X** (capital X) ensures that graphical output will be transferred so it can be displayed.

Alternative: Xpra

Alternatively you can log in with [Xpra](#), which also communicates via *SSH*, but allows you to work with graphical output even with a poor internet connection. *Xpra* usually has to be installed from the package sources first. Once this is done, the following command establishes a connection to the laboratory computer

```
xpra start ssh:ma1@a12.astro.physik.uni-potsdam.de --ssh=ssh
```

The command is not very different from the one above, except that here the beginning and the end are slightly different. ma1 has to be replaced by the group name here as well. If the connection has

been established successfully, a *Xpra* icon or menu usually appears on the desktop (under Ubuntu it can be found in the upper right corner next to the network/volume/battery indicator). This menu can be used to configure *Xpra* as well as, via the menu item *Start*, to start programs directly on the laboratory computer. *Xpra* has the nice advantage that the windows integrate seamlessly into the local system.

Furthermore it offers the possibility to disconnect from the *Xpra* session without ending it by using the menu button *Disconnect*. This allows you to interrupt the session at any point and continue it later. All that is needed is the following console command:

```
xpra attach ssh:ma1@a12.astro.physik.uni-potsdam.de --ssh=ssh
```

The *Xpra* session is terminated with:

```
xpra exit
```

Windows

PuTTY and Xming

Linux uses the X-Window-System to display graphical output while Windows has it's own system. That's the reason why graphical output from a Linux computer can not simply be displayed by Windows. To solve this you need to install an X-Window-Server designed to work with Windows. There are many options and programs that offer this functionality and we suggest these, slim freeware solutions:

Required programs

- [PuTTY](#) as the SSH-Client
- [Xming](#) to display X-Window-Server windows

First install the server Xming, which optimally should be incorporated in the Windows autostart list. PuTTY is an executable that just requires a quick configuration:

- click on the menu item *Session* and enter `a12.astro.physik.uni-potsdam.de` in the field *Hostname*
- in *Connection* → *SSH* → *X11* check *Enable X11 Forwarding* to allow graphical output
- in case of problems with the graphical output, enter `localhost:0` in the field *X display location* in *Connection* → *SSH* → *X11*

MobaXterm

MobaXterm is a SSH client which already includes the X11 Server.

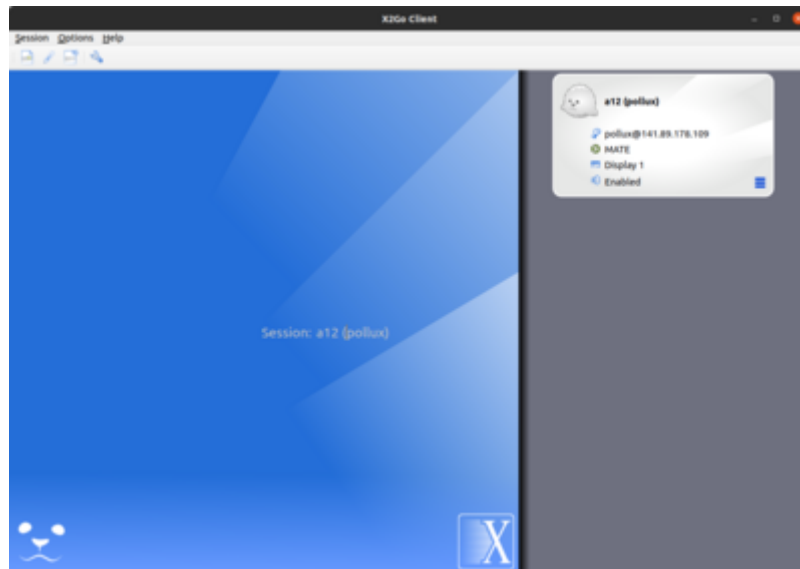
- [MobaXterm](#)

To increase the stability of the connection, it has proven useful to activate the “SSH keepalive” option and then restart MobaXterm.

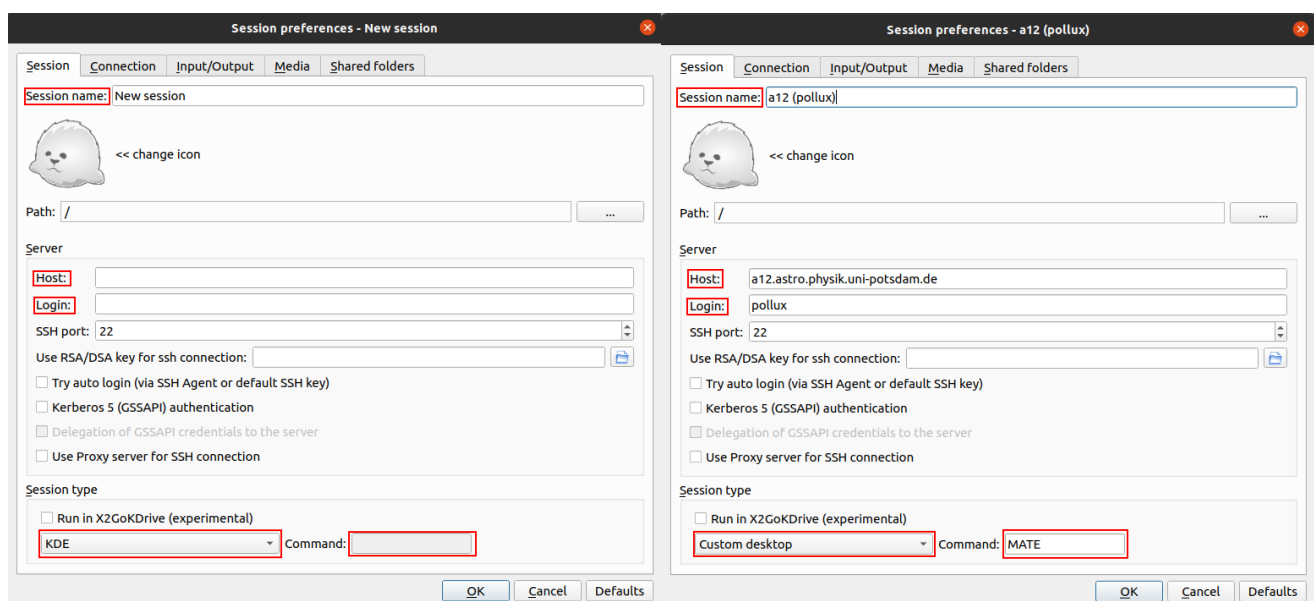
Operating system independent

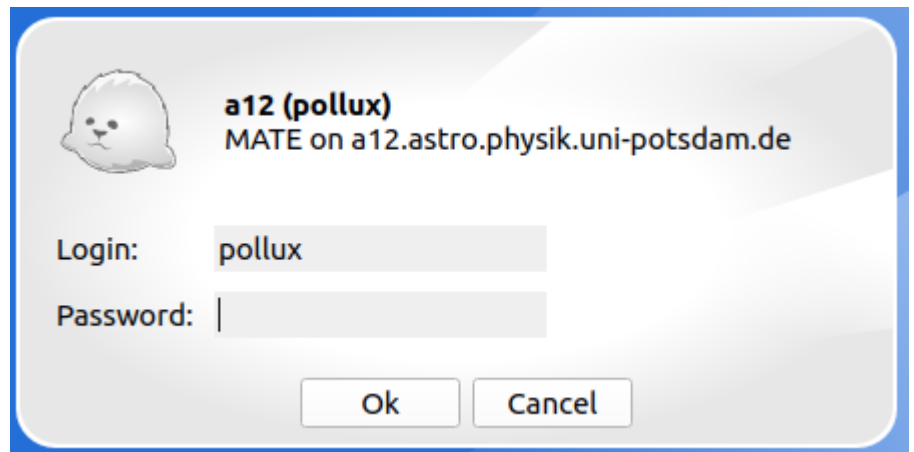
X2GO

In addition to the above mentioned possibilities, a X2Go server is also installed on the laboratory computer **a12**, which allows to work remotely and efficiently with graphical programs. The X2Go client is available for all major operating systems (Windows, Linux and MacOS).



After installing the client you can create a new session by clicking **Session** and then **New session ...**. In the window that opens you have to define the session parameters.





These include **session name**, **host**, **login**, and the **session type**. The **Session name** can be freely chosen and is only used to distinguish between different sessions. As **host** `a12.astro.physik.uni-potsdam.de` must be specified. As **Login** the respective user name like e.g. `ma1` has to be entered. For **Session type** you have to select Custom desktop from the dropdown menu and enter MATE as **Command**.

After clicking on OK you can start the connection to **a12** by double clicking on the corresponding session entry in the main window of X2Go. Only the password for the respective account will be requested before the connection is established. The window that opens shows the MATE desktop, on which you can work as if you were sitting directly at the computer.

Internal Login

The computer for the laboratory courses shall be used for data reduction. It is in room 2.009 in the Institute in Golm and can be booked, i.e. request a timeslot by email.

These timeslots are already booked:

External Login from the computer pool in the Physics Institute

Also the Linux computers in the computer pool of the Physics Institute (room 2.28.1.101) can be used to login on the lab computer. See the description here: [Linux](#). The computers share the fast internet access of the University and so the transfer rate, i.e. for graphical output it is sufficient to work. To get an account for the computer pool, ask Mr H. Todt (room 2.28.2.004).

Linux Sheet Paper

This [pdf file](#) list the absolutely basic commands for a Linux console. The [Bash Cheat Sheet](#) contains

some further commands.

Access to files by SFTP

Pure file transfer is possible, independent of the computer system, by logging in with SFTP (Secure File Transfer Protocol). All you need is a program that can run SFTP transfers, be it console based or graphical (i.e. [WinSCP](#)).

The login information are in principle the same as for the SSH client:

```
Server:  a12.astro.physik.uni-potsdam.de
Protocol: SFTP
User:    ma1
Password: as before
```

ma1 is given here as an example and must be replaced by the corresponding group name.

Attention: In contrast to the login methods described in the previous sections, SFTP is just for file transfer. It will not let you work on data reduction or alike.

[Laboratory Courses- overview](#)

From:

<https://polaris.astro.physik.uni-potsdam.de/wiki/> - OST Wiki

Permanent link:

<https://polaris.astro.physik.uni-potsdam.de/wiki/doku.php?id=en:praktikum:zugang&rev=1686664254>

Last update: 2023/06/13 13:50

