

N1 - Stellar spectra of different spectral types (DADOS)



This manual is being revised due to the change to the 900 lines/mm grating and the change to enhanced evaluation software. However, DADOS is fully functional and ready to use. During analysis, the supervisors will assist with some steps that differ slightly from the current version of this manual.

The aim of this observation is to obtain an overview of different spectral types. Thus, we will give you the coordinates and the apparent magnitude of four stars of different spectral type that are well visible during the night of your observation. Take spectra of these stars in order to classify them by means of the spectral lines and the shape of the continua.

Observation

Nightly observations at the OST in Golm with the DADOS spectrograph are required. The scientific and technical background for this observation are presented in the seminary talks. A list with objects will be provided by us.

Note: The following exposures are needed *for every* star:

- stellar spectra
- calibration spectra with a discrete light source
- calibration spectra with a continuous light source (flatfield)
- darkframes for the exposures of the stellar spectra and the continuous light source

The calibration exposures are needed to calculate the pixel scale (wavelength calibration) and to remove the instrument signatures and possible artifacts.

Data reduction

The scripts needed for the data reduction can be found on the [Laboratory computer](#) in the directory `~/scripts/n1_dados/transition_version`.

Preparations

The first tasks are to login to the [Laboratory Computer](#) and to copy the observational data (FITS files), including darkframes, and the additional calibration exposures from the directory `~/data/<date>` to your own directory `~/data_reduction/`.

Data reduction

The **1_masterimages.py** script is available for data reduction. This script combines the individual images into corresponding 'master' files. For example, the individual dark images are combined into *masterdarks* according to exposure time by calculating the median of all images for each pixel.

The following variables need to be set in the script:

```
###  
# Path to the directories with the images  
#  
# Darks:  
path_darks: str = '?'  
  
# Flat darks:  
path_flat_darks: str = '?'  
  
# Flats:  
path_flats: str = '?'  
  
# Darks for wavelength calibration exposures:  
path_wavelength_darks: str = '?'  
  
# Wavelength calibration exposures:  
path_wavelength: str = '?'  
  
# Spectra:  
path_spectra: str = '?'
```

`path_darks` is the path to the dark images with the same exposure time as the spectra images. The path to the latter must be specified in `path_spectra`. The flats must be specified in `path_flats` and the corresponding darks in `path_flat_darks`. The same applies to the images for the wavelength calibration, which must be specified under `path_wavelength` and `path_wavelength_darks`.

In addition, the variable `trim_image` should be set to **False**.

Selection and inspection of the data

There are several tools for viewing 2D images in FITS format. *ds9* is easy to use and can be started from the terminal:

```
ds9 filename.fits
```

Tasks:

- determine the range of CCD rows that contains the stellar spectrum (`master_spectrum.fits`).

- determine the range of CCD rows that can be used as background. Important: The background region must be outside the spectrum, but still within the used slit of the spectrograph. If the latter cannot be distinguished from the black background, compare with the images of the lamp spectra (master_wave.fit).

Wavelength calibration

Basic principle

The script searches for the maxima in the calibration spectrum, marks them and notes the pixel number where the intensity maxima are located. It then assigns a wavelength to each of these values. This creates a pixel-wavelength mapping that is used to analyse the star's spectrum.

Parameter

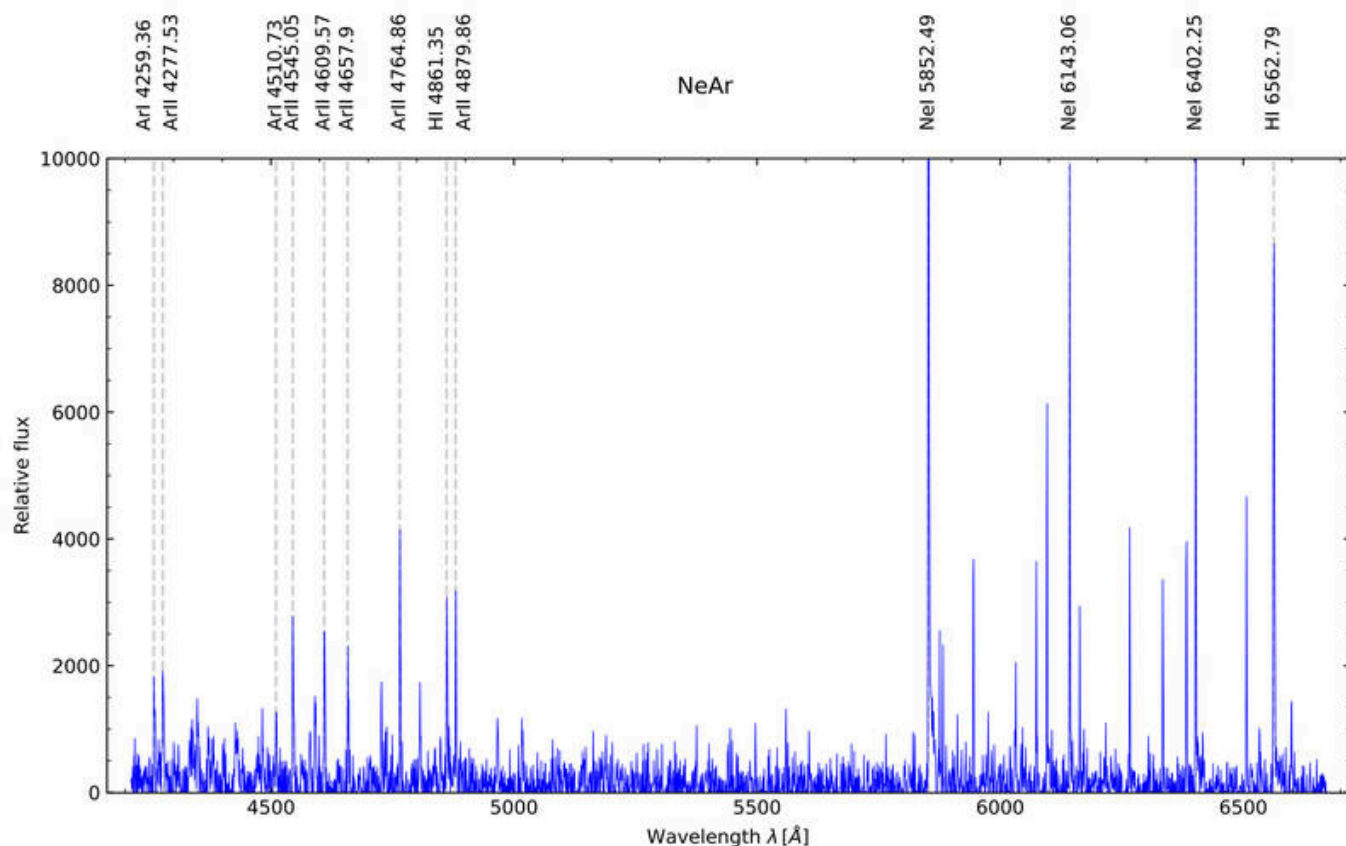
The corresponding script is called **2_findcaliblines.py**. In this file, using an editor of your choice (e.g. Kate), you only need to edit the line region where the calibration spectrum is to be found (specRegionStart and specRegionEnd; can be the same as the one you want to extract the star spectrum from) and a line region that is **outside the slits** (bgRegionStart, bgRegionEnd):

```
# name of the file with the wavelength calibration spectrum
calibFileName    = "calib_wave.FIT"

# region (rows on the image) containing the calibration spectrum
specRegionStart = 495
specRegionEnd   = 600

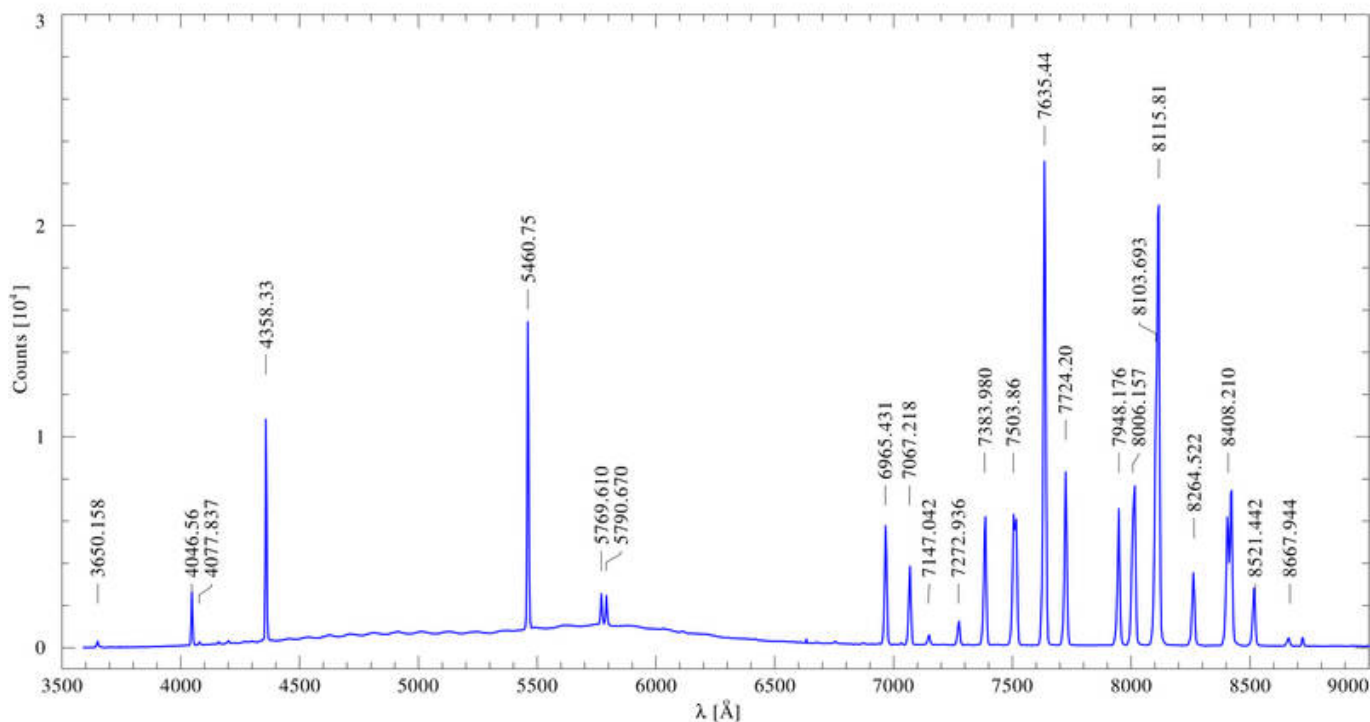
# background region (rows on the image), which needs to be outside of the
slits
bgRegionStart   = 0
bgRegionEnd     = 200
```

The calibration is designed such that lines of mercury and argon are identified. The strongest lines that can be expected are marked in the following plot.



📄 Emission spectrum of our Ne-Ar calibration lamp. The strongest lines are identified.

Old Hg & Ar calibration



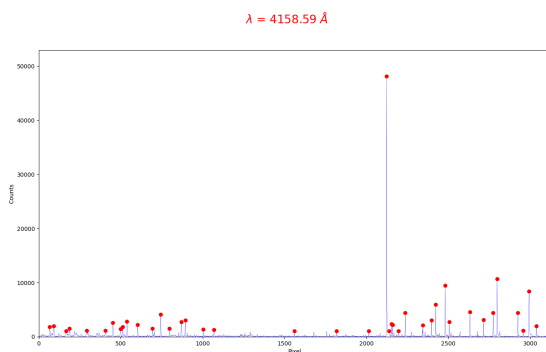
📄 Emission spectrum of our calibration lamp. The strongest mercury and argon lines are identified.

Execution of the script

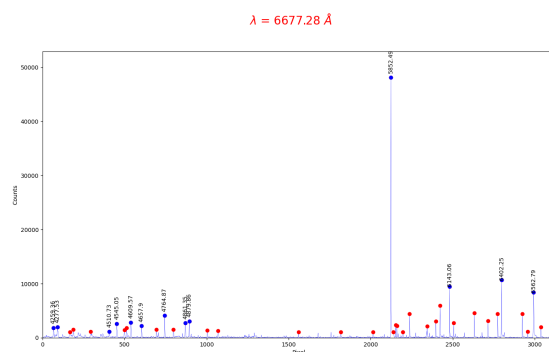
Now run the script by executing:

```
python 2_findcalibrlines.py
```

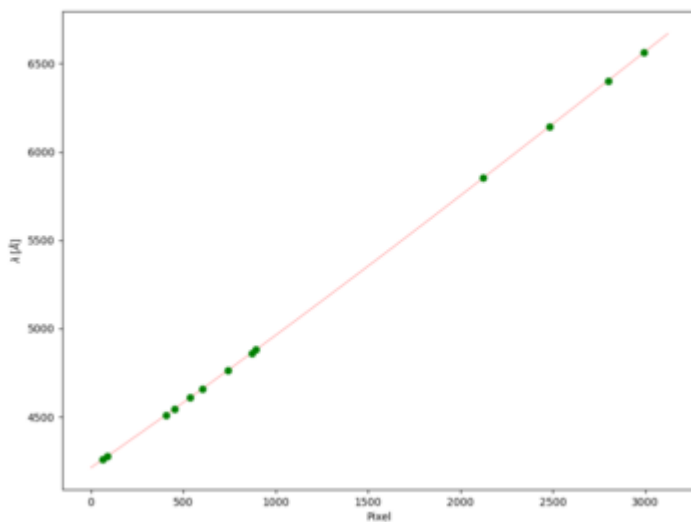
After running the script, the following window will appear, showing the emission line spectrum of neon and argon, with all lines identified by the script marked with a red circle. All emission lines with a known wavelength must now be selected in this window. The example spectrum above with the identified lines is very helpful here. The script specifies the possible lines, so all you need to do is left-click to select the corresponding red circles. The wavelength of the current line is displayed in red at the top of each window. If the wavelength of a line not marked with a red circle is displayed, it can be skipped by right-clicking. Successfully marked lines will then appear in blue and the corresponding wavelength will be written next to the emission peak (see below). At least four lines must be marked for a successful wavelength calibration. Once all possible lines have been marked, the process can be completed by pressing the 'Q' key on the keyboard.



Calibration plot detected lines

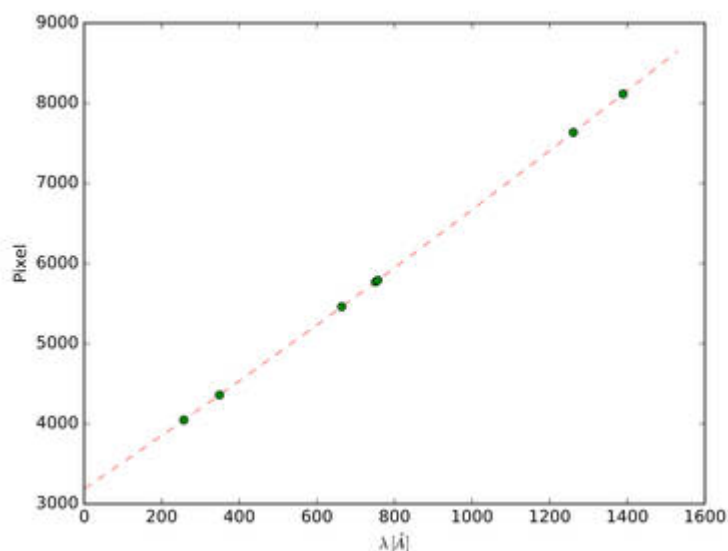


$$\lambda = -2.80\text{E-}09 \times \text{pxl}^3 + 2.91\text{E-}05 \times \text{pxl}^2 + 7.23\text{E-}01 \times \text{pxl} + 4212.31$$



Relation between wavelength and pixel for our DADOS spectrograph

Old Hg & Ar calibration



Relation between wavelength and pixel for our DADOS spectrograph

By default the following files are then created:

- `calibration_spectrum.dat` - containing the correlated pixel to wavelength scale
- `calibration_selection.pdf` - a plot showing the selected lines for the wavelength calibration (please add this plot to your report)
- `calibration_fit.pdf` - a plot of the wavelength calibration (i.e. `calibration_spectrum.dat`, please add this plot to your report)

Error handling

Check the plots for possible errors. Especially, if the `calibration_fit.pdf` does not appear to be

linear, edit the script, and run it again. Errors sources could be:

- wrongly marked lines
- a non standard wavelength range or another calibration lamp. The wavelengths of additional calibration lines can be identified with the help of the [NIST Database](#). Those wavelength need be added to the variable `linelist` in the script.

The stellar spectrum

Basic principle

The next step after the determination of the calibration curve is the reduction of the stellar spectrum. First, the darkframe is subtracted from the spectrum, then the spectrum is divided by the flatfield, and, lastly, the wavelength calibration is performed. It also exist the possibility to mark spectral lines in the spectrum.

Parameters

This associated script is named `2_extract_spectrum.py`. The script has a number of parameters, similar to the previous scripts, along with some additional parameters. The parameter section usually looks similar to this:

```
### science spectrum file ###
# file with stellar spectrum
science          = 'star.FIT'
# directory of the darkframe for the stellar spectrum
darkframe_dir    = 'darks/??s/'
# flatfield directory
flatfield_dir    = 'flats/'
# directory of the darkframe for the flats
flatdark_dir     = 'darks/??s/'

### Data that should be extracted ###
# region containing the science spectrum
specRegionStart  = 495
specRegionEnd    = 590

# sky background region (inside the slit)
bgSkyStart       = 96
bgSkyEnd         = 104

### Plot range ###
# set the variables to '?' for an automatic resizing
lambdamin        = '?'
lambdamax        = '?'
#lambdamin        = 3500.
```

```
#lambdamax = 5000.
```

Comments on these parameters::

- The variables `specRegionStart` and `specRegionEnd` define the range of CCD rows that will be extracted. These rows need to be chosen such that the stellar spectrum is completely covered.
- The sky background needs to be subtracted. So, as before, a range of rows **within the slit** but **outside the spectrum** must be chosen. If possible, the number of rows should be the same for both, i.e. $(\text{specRegionStart} - \text{specRegionEnd}) = (\text{bgSkyStart} - \text{bgSkyEnd})$.
- The options `lambdamin` and `lambdamax` can be used to restrict the plot range. If these variables contain a ? the plot range will be determined automatically.

Additional parameter

Reduction method: The variable `mode` allows to specify the reduction method. An average over all extracted CCD rows will be calculated, if the method *mean* is set. A median function will be applied, if *median* is selected. The latter method should be used as the default.

```
### Image reduction mode ###
#mode = 'mean'
mode = 'median'
```

Line identifications: The line identifications can be switched on and off via the variable `plotident`:

```
### Idents ###
# plot idents yes or no
plotident = 'yes'
#plotident = 'no'
```

The file with line identifications, which by default is simply denoted by `absorption_lines`, is not required for a successful script run, i.e. the variable `lineFile` can be an empty string or point to an empty file:

```
# file containing line identifications
lineFile = ""
# or
lineFile = "directory/empty_file.dat"
```

See below for an explanation how to adjust the line identification file for the individual stars.

File names: It also exists the possibility to change the names of the output files as well as to adjust the names of the files from the first step of the data reduction that are now needed as input for the wavelength calibration.

Execution of the script

Now run the script:

```
python 2_extract_spectrum.py
```

The following files are then created:

- stern_spectrum.dat - with the tabulated spectrum
- stern_spectrum.pdf - showing the plotted spectrum
- flatfield.pdf - showing the plotted flatfield (please add this plot to your report)

Identification of spectral lines

Line identifications for known spectral lines can be plotted by means of a file containing these information. An example file (absorption_lines) can be found in the scripts directory. This file **contains some but not all important spectral lines** that are visible in the variety of stars, which we observe. **Therefore, it is required to search for additional spectral lines** and the corresponding transitions for example in the [NIST Database](#). A how-to for this can be found [here](#). Moreover, it is recommended to create an individual line-identification file for each of the observed stars.

To identify lines in the stellar spectrum, copy the relevant lines into the separate file. The format of that file should look like (wavelength in Å | identifier):

```
3888.052    HI
3970.075    HI
4861.38     HI
6562.88     HI
5801.33     5811.98    CIV
```

As can be seen from the last entry, also ions with multiplet transitions can be included. **Line identifications that can be not assigned to any spectral line need to be removed from the corresponding file.**

The file can then be referenced in the Python script:

```
# file containing line identifications
lineFile = "directory/line_list_for_starname.dat"
```

Rerun the script to obtain a plot with adjusted line identifications.

Report

A usual report is to be handed in. See a general overview about the required structure and content [here](#).

For this experiment, the theoretical overview in the report should describe the formation of stellar spectra, the different spectral types with their main characteristics and properties, and the concepts behind radial velocity measurements.

In the methods section describe the observations and the data reduction, highlight points that deviate from general description in here and list all the parameters you set for the extraction. Further, include all the plots of the data reduction in the report (a few in the text, most of them in the appendix).

The results part presents and describes the calibrated spectra of the stars.

The analysis of the spectra contains the estimation of the spectral type for your target stars based on the characteristics that you have described in the theoretical background section.

Finally, discuss your findings. Bring your results into a larger context and make a literature comparison when possible. This also includes that you identify potential problems with the data, the data reduction, or the analysis and possible solutions for them. Are there inconsistencies? Do you see specific and obvious features in the spectra you cannot explain?

Note: This [figure](#) [1] can be helpful to classify the spectra. You may also compare your spectra to the [spectral atlas](#) and look up the [NIST web page](#) to identify individual spectral features. Another guide to the classification of stellar spectra can be found [here](#).

[1] [Struve, O. \(1959\): Elementary Astronomy \(Oxford University Press, New York\) p. 259](#)

[Overview: Laboratory Courses](#)

From:
<https://polaris.astro.physik.uni-potsdam.de/wiki/> - OST Wiki

Permanent link:
<https://polaris.astro.physik.uni-potsdam.de/wiki/doku.php?id=en:praktikum:sternspektren&rev=1733473848>

Last update: 2024/12/06 08:30

