

OST 2.0 operation



OST 2.0 - Our new Telescope
a CDK20 (Planewave)

Security remarks

- **NEVER** look at the Sun with a telescope without a proper sun filter. This can lead to **irreparable damage** of your eyes and the optical instruments! The OST is not designed for observations of the Sun, so never point it to the Sun!
- **WATCH THE CABLES!** The user-friendliness of the telescope is based on a high automation of the components, which implies the need of some cables. To avoid getting caught in the cables connecting the telescope and the applied instruments, pay attention to them especially during rotations of the telescope.
- Always close the door to the roof because the hatch of the dome could collide with it, which could damaged both.

General remarks

The observatory can operated complete remotely or semi remotely (being locally in the observatory, using some of the remote capabilities). The handling of the individual components of the observatory is briefly explained in the following, starting with the manual controls before the remote capabilities are discussed.

The dome and the roof

Information on the dome and the roof can be found in a separate [article](#).

Manual operation

Switch on the observatory

- remove the covers (if any) of the telescope's main and secondary mirrors and place them on the movable storage container or one of the desks
- press the On / Off button at the telescope's mounting and wait until the booting process is completed



Control unit at the mounting

Open the dome

- use the dome remote control to first open the shutter
- as needed, open the horizontal hatch

The Mount: GM4000 HPS II

A description of the hand terminal, including some aspects of the operating system are described in a separated [article](#).

Setting the time

For the correct calculation of the object positions, the telescope needs to know the current time. As the internal clock is often ahead of the actual time, it needs to be corrected before each observation.

To set the date and time, use the hand terminal:

```
MENU - Local Data - Clock - Date and Time
```

In the following screen one can set the time (accurate to the whole seconds) with the numeric keys. It is useful to have a radio clock available or to use an Internet service, such as [this one](#). Set a time approximately 30 seconds ahead of the current time and wait until the time set on the hand terminal is reached, then press **ENTER** to confirm.

Remote operation



Observatory Management System (OMS)

The remote capabilities of the observatory are provided by the Observatory Management System (OMS), which is the large metallic box right above the left desk in the dome. The in- and outdoor webcams, the all-sky monitor, as well as the temperature regulations and ventilation system of the mirrors can only be operated by means of the OMS.

Log in

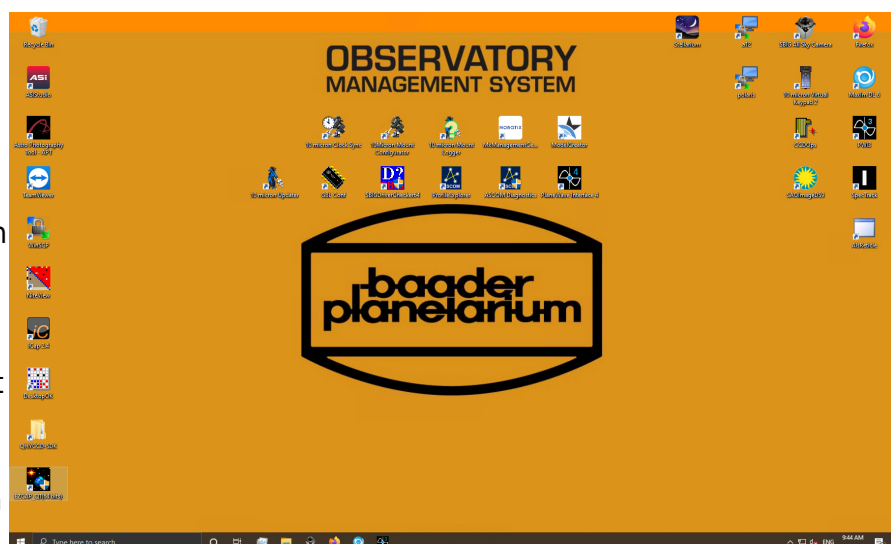
The OMS is accessed using the Remote Desktop Protocol (RDP). However, login is restricted to the local IP address space. Therefore, you must first log in to one of the Linux machines of the astrophysics groups or establish an SSH tunnel to these machines. The columba evaluation computer can be used for the lab course. A [how-to](#) explaining the SSH login is available.

To use RDP from a Linux machine, we recommend Remmina, which is available on all our Linux installations. A sample configuration for Remmina is described in this [article](#). This article also explains how to login from a Windows machine.

Startup

After logging in to the OMS you will see the following desktop. If the icons are not so nicely arranged, the configuration shown, to which we will refer here in part, can be restored using the program *DesktopOK*.

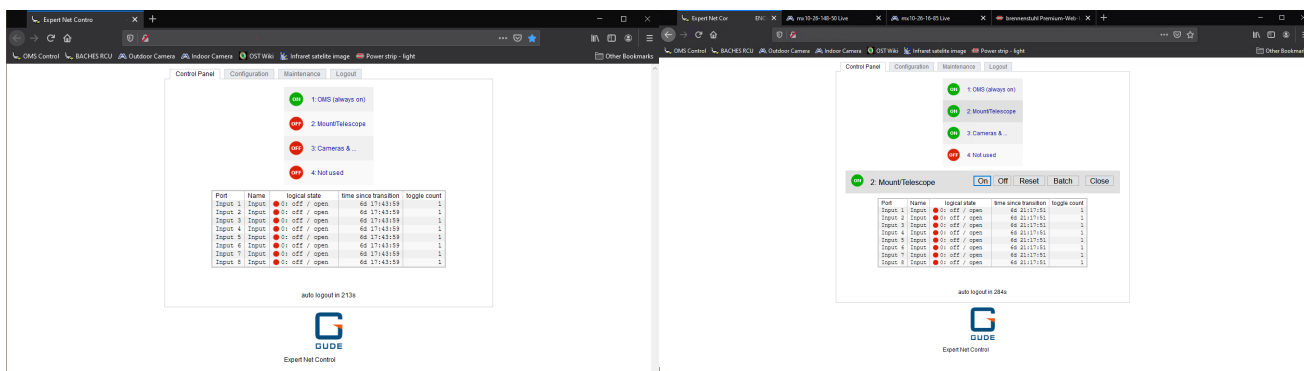
The most important programs are grouped in the upper right corner of the desktop, while the programs that are not used so often are arranged on the left side. The programs in the middle of the desktop are



usually not relevant for normal operation. The very most important programs are also placed in the taskbar.

Powering up and booting devices

The first thing to do is to start Firefox. Some important devices of the observatory bring their own web interface and can be accessed through web browser. Firefox can be started by clicking on the icon in the upper right corner of the desktop or alternatively from the taskbar. The start page shows the OMS control menu (see below).



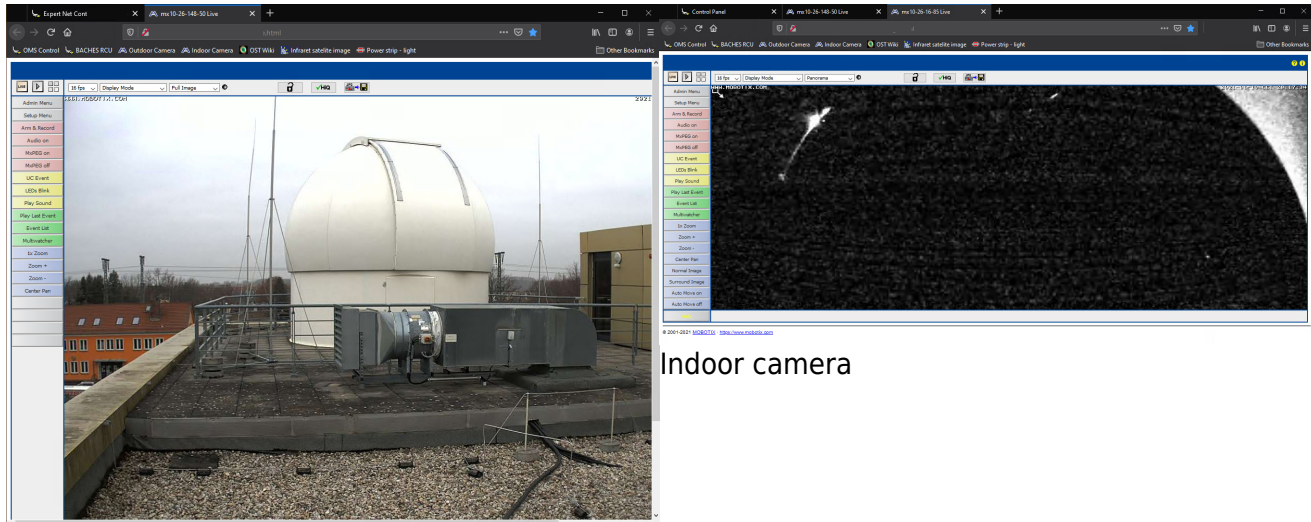
As shown in the figure above, four devices can be switched using the control menu. In position 1 is the OMS itself, which of course may never be switched off and is therefore always highlighted in green. On position 2 is the telescope or the mount. The 3rd position is used to switch the cameras, the all-sky camera and all other electrical attachments to the telescope. The 4th position is currently not occupied by a device.

If you click on **Cameras &...** the buttons for switching on and off become visible. By clicking on **On**, the cameras and all other telescope attachments can be switched on. The corresponding entry is then colored green. After the observation and after you have shut down the cameras properly, you have to switch off the power supply of the cameras and all attachments again by clicking **Off**.

For telescopes/mount the procedure is slightly different. Click on the **Batch** button and then make sure that the settings are as follows: **switch on, wait 3 sec(s), switch off**. Then click on **Ok**. The status indicator will briefly go to green and then change back to red. This is perfectly normal and expected. More about this below in the section [After the observations](#). After about 20 seconds, the mount should be fully booted and ready for operation.

Get an overview

It is a good idea to take a look at the surveillance cameras. We have an indoor and an outdoor camera. These are likewise accessible over Firefox. To do this, click on **Outdoor Camera** or **Indoor Camera** in the bookmark toolbar at the top.

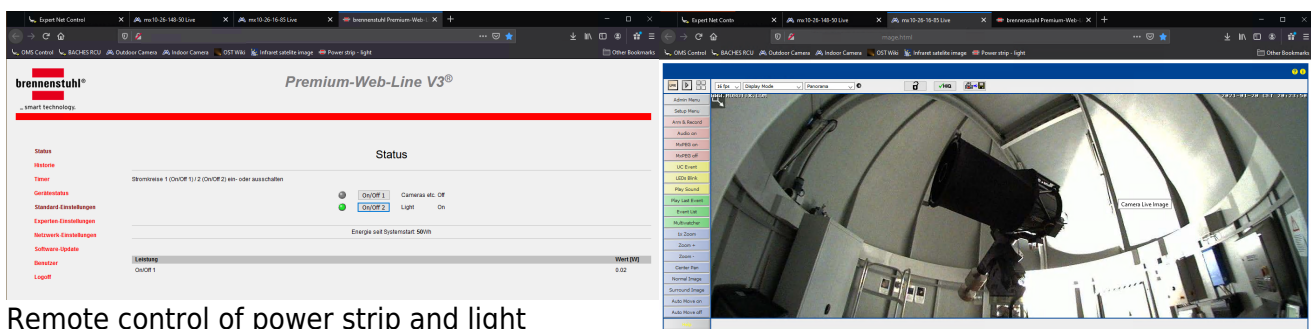


Indoor camera

Outdoor Camera

The outdoor camera is located on a pole a few meters away from the dome. On this pole is also the all-sky camera, which we will go into in more detail in a moment. You won't see much on the inside camera at first, since the dome is still closed and normally no light is turned on inside the dome 😊. On the picture above you can still see a little bit of light coming through a small gap at the dome hatch.

If you still want to get an overview of the inside of the dome, we also have the possibility to turn on the light in the dome via the web browser. To do this, click on **Power strip - light** in the bookmark bar at the top. On the page that opens you have the possibility to turn on the light as well as to switch the power strip at the bottom of the telescope's pillar. In this way it is also possible to operate cameras that do not have a plug that fits into the OMS control hub, which is located on the telescope and which is switched via the OMS control window in the web browser (see above). To turn the power strip and light on and off simply click **On/Off 1** and **On/Off 2**, respectively. Below is the interior view again this time with the light on.

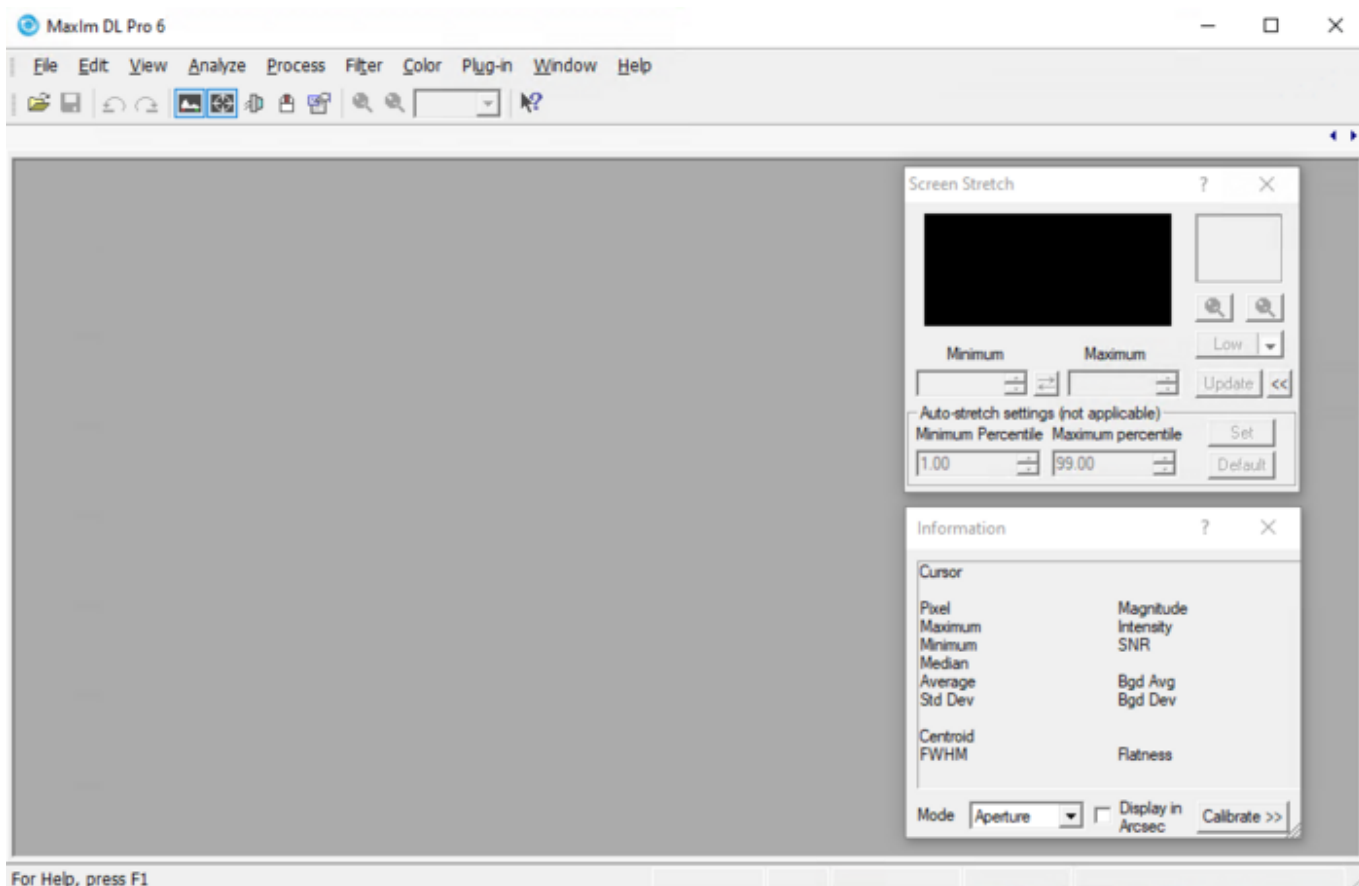


Remote control of power strip and light

Indoor camera with light on

MaxIm DL

MaxIm DL is the core element in the control of the observatory. The dome, the mount, or telescope and all cameras can be controlled via this software. For details on MaxIm DL and how to connect it to the observatory components, please refer to the [MaxIm DL article](#).



For Help, press F1

Opening the dome

The dome can be opened either by [hand control](#) or by [MaxIm DL](#). For the latter, just click on the **Open** button in the **Dome** tab of the **Observatory** control window of *MaxIm DL* and both the hatch and the shutter will open fully automatically.



Ready for operation

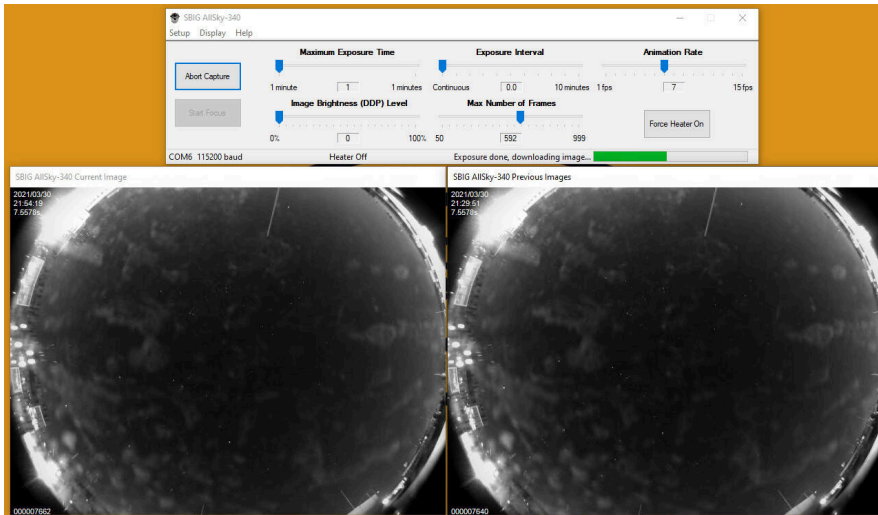
If you have done all these steps successfully, the observatory is basically ready for operation. In the following we will discuss which devices and software are still to be discovered and what

else can be done 😊.

The All-Sky Monitor

The All-Sky camera (see photo) from SBIG offers the possibility to get a good impression of the given observing conditions. As soon as the power supply for the cameras is switched on, the software for controlling the all-sky camera (see figure below) can be started. The corresponding shortcut on the desktop is called **SBIG**

All Sky Camera.



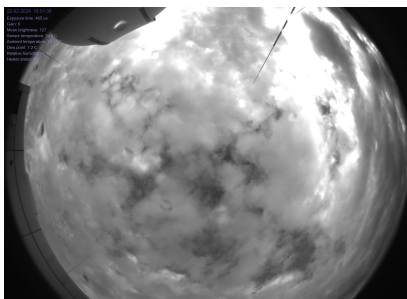
All-Sky software



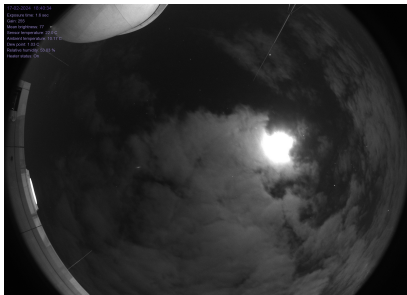
AllSky-340 from SBIG with a little residual moisture from the last rain on the dome

The All-Sky monitor is already focused and it is usually not necessary to adjust the default setting, so you can click **Start Capture** directly. The camera will start capturing images continuously. The current image is displayed in the **SBIG ALLSky-340 Current Image** window (on the left of the image above), while the **SBIG ALLSky-340 Previous Images** window (on the right of the image above) shows a video from the images already captured. The camera adjusts the exposure time automatically. Especially in darkness, you may have to wait a few exposures until the camera has adjusted the exposure time correctly and you can then see the surroundings and the night sky. The camera is connected to the OMS via a serial connection, which makes the connection stable but also very slow, so that it takes a while until the individual images are downloaded.

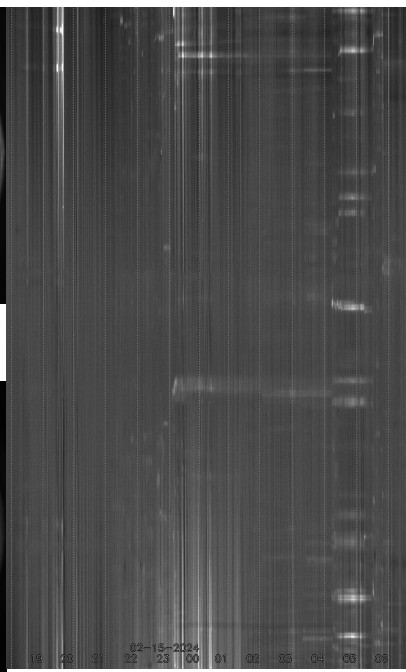
In addition to this well-established all-sky camera, we now have our own construction that is in operation 24 hours a day and provides a [Live-View](#) that is accessible to all. In addition a [Video](#), a [keogram](#) and a [star trail exposure](#) have been made for each night of the last weeks.



All sky - example image (Placeholder)



All sky - star trails



All sky - keogram



In-house designed all sky

(Placeholder)

(Placeholder)

camera

Focusing & PWI3

How to focus the telescope and what the software *PWI3* has to do with it is described in the following [article](#).

Observations

Observations with the eyepiece

There are eyepieces with different focal lengths. Start with an eyepiece of the largest focal length, then focus and use the direction buttons

N - S - E - W

to move the object to the center of the field of view. Afterwards replace the eyepiece with one of lower focal length and refocus the telescope. After observing, remove the eyepiece and reattach one of the spectrographs or cameras with the appropriate adapter.

Observations with a camera

- [Photometry](#)
- [Astrophotography](#)

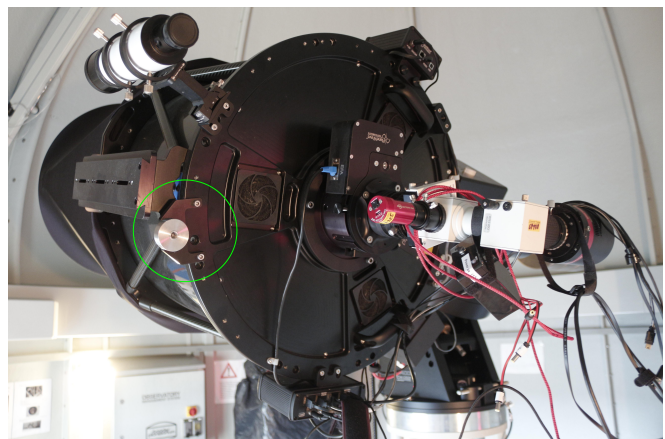
Observations with the spectrographs

- [Spectrograph how-to](#)
- [Example spectra](#)

Changing the instruments

There are two basic things to keep in mind when changing instruments: First, the focuser has a limited range of adjustment, which means that different adapters (M68 thread) are needed for different instruments. In the [focusing](#) article, we explain in more detail how to calculate the ideal adapter length and list the adapter lengths normally used for the most common instruments.

In addition, the interchangeable balancing counterweights on the tube should be matched

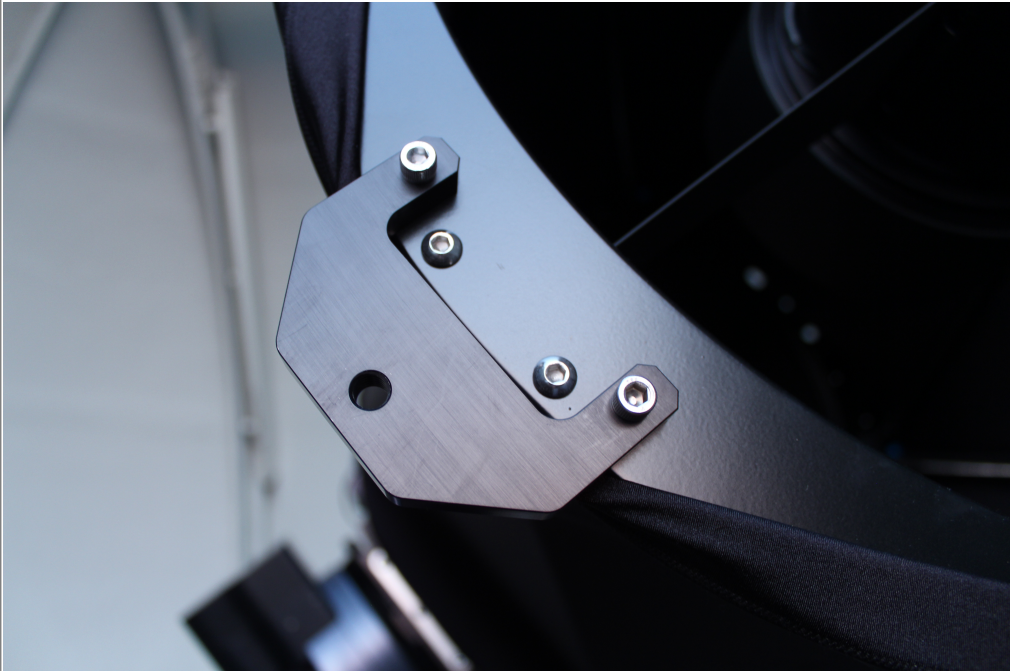


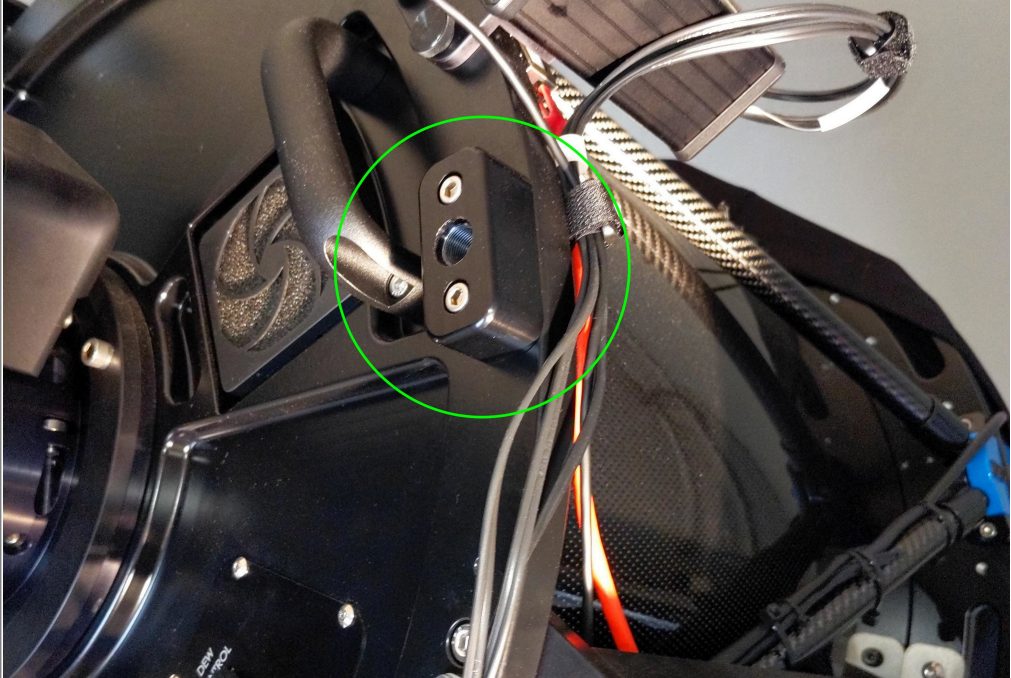
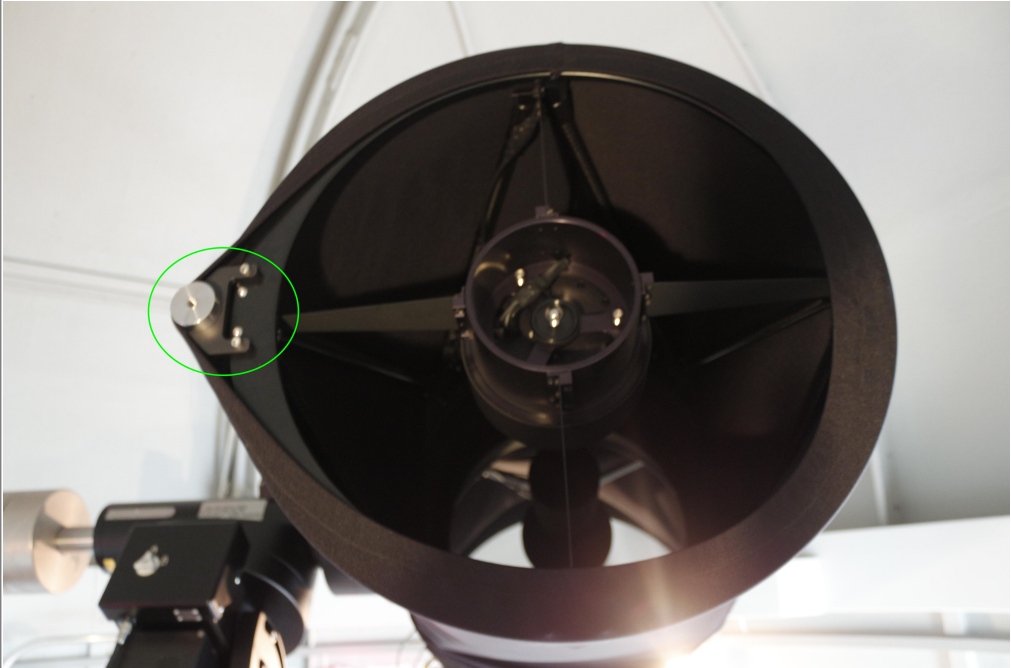
CDK20 with DADOS and counterweight

to the instrument (see table below). Several small 230g counterweights and a two 1kg counterweights are available. The latter are mounted on a rod on which they can be moved as required. The rod holder remains attached to the tube at all times.

The counterweights are located in the large metal cabinet. The small counterweights are screwed onto a counterweight holder, which usually has to be mounted first. When handling the counterweights at the front of the tube, the telescope should be positioned as close to the ground as possible to prevent the counterweights from falling into the tube when they are screwed on or off.

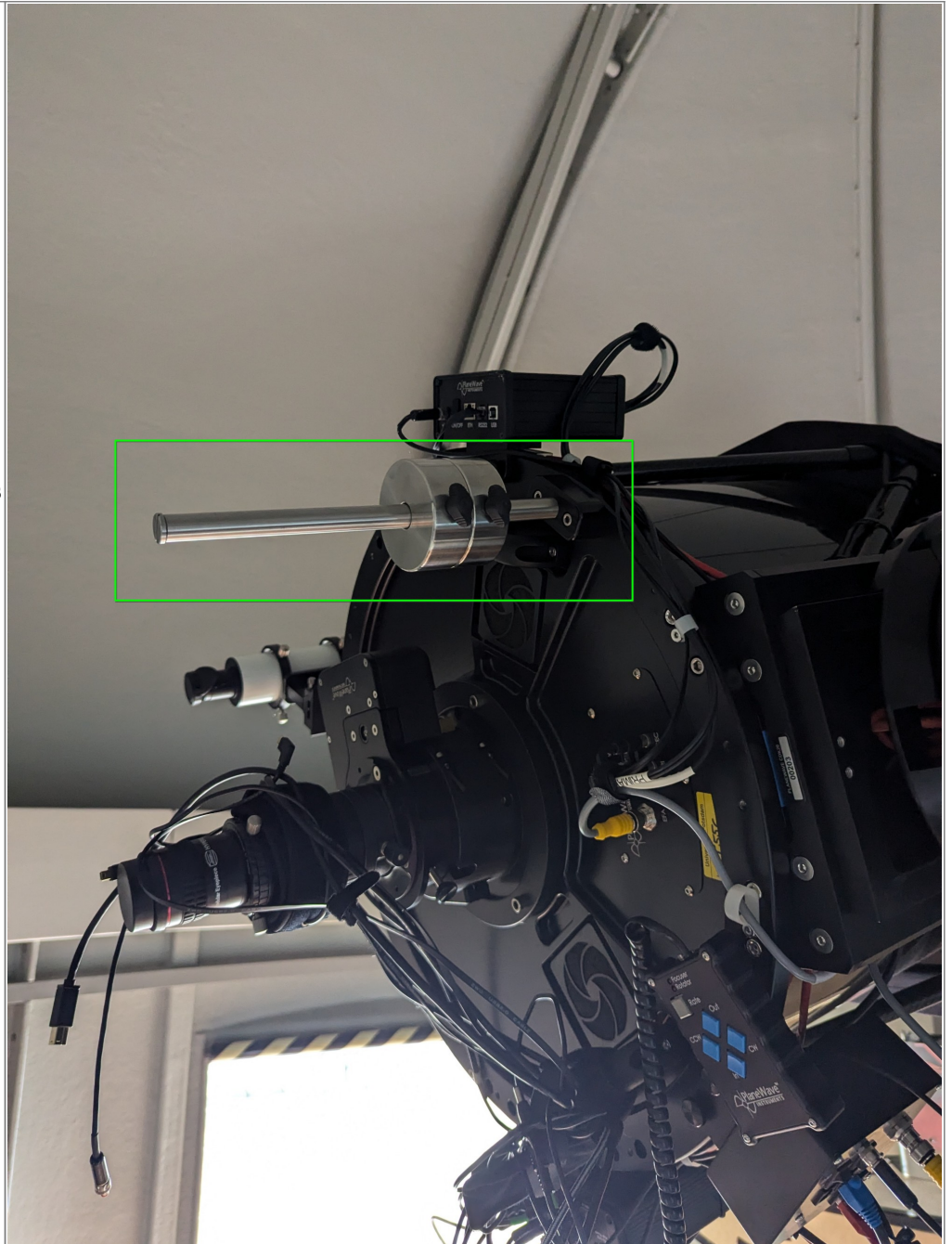
Configurations:

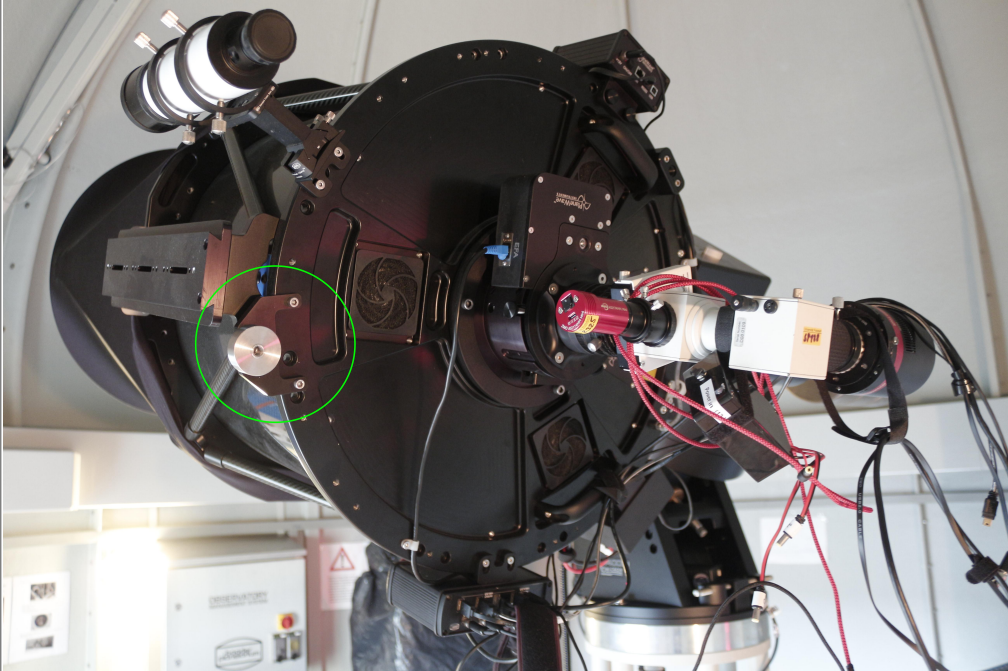
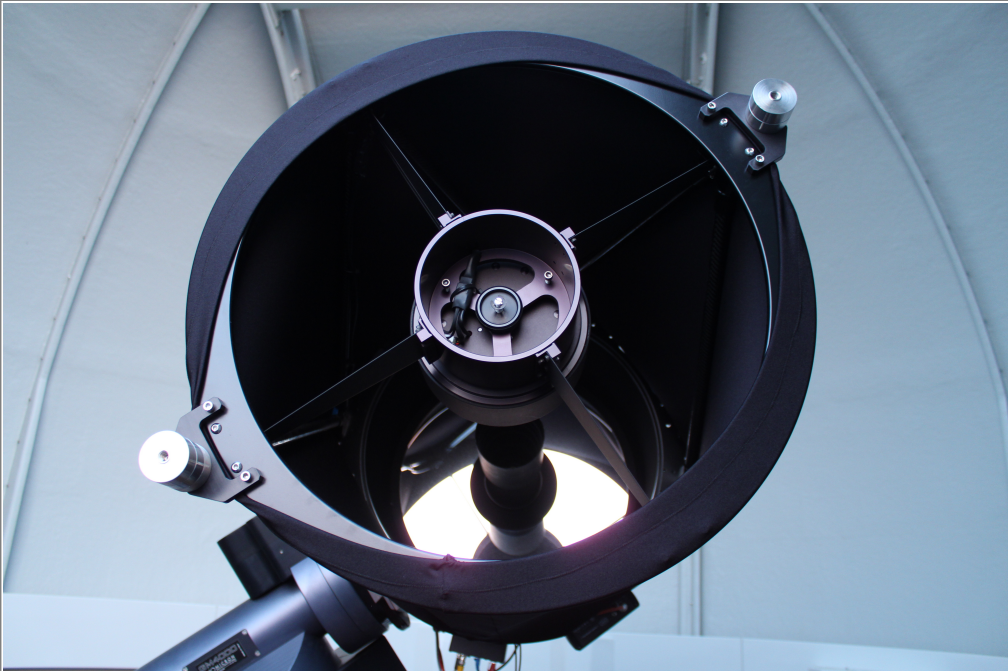
<p>Counterweight holder</p>		
------------------------------------	--	---

<p>Mounting block for counterweight bar</p>		
<p>Always mounted</p>	<p>A small balancing counterweight in front of the tube</p>	

Eyepiece

At the **rear** of the tube: **two 1kg counterweights** (green rectangle). The defined position of the two 1kg weights on the buoyancy compensator rod is marked. At the **front** of the tube: **Two small weights** (not shown), i.e. one in addition to the standard weight.



<p>DADOS & QHY 268M</p>	<p>A small balancing counterweight at the back of the tube</p>	 A photograph of a telescope mounted on a tripod. The telescope tube is black and has various accessories attached. A small, circular, silver-colored counterweight is mounted on the back of the tube, highlighted by a green circle. The background shows a white wall with some electrical equipment.
<p>BACHES & QHY 268M</p>	<p>No additional balance weight required</p>	 A photograph showing the interior of a telescope tube. The primary mirror is visible at the bottom, and the secondary mirror is mounted on a spider vanes structure in the center. The tube is black and has a silver-colored ring at the top. The background is a white wall.

<p>QHY600M</p>	<p>No additional balance weight required</p>	
-----------------------	--	--

After the observations

Parking & warming up

After the observation, the telescope must be returned to its original configuration. For this the following things have to be done:

- **Switch off camera cooling** (if applicable): First you should switch off the cooling of the cameras or shut them down. To do this, click **Warm Up** in the **Setup** tab of the **Camera Control** window of *MaxIm DL*.
- **Close Dome:** Then you should close the shutter and the hatch of the dome. To do this, the dome can be closed manually using the manual control, making sure that the flap is closed first and then the gate. Alternatively, you can close everything together with one click in *MaxIm DL*. To do this, click **Close** in the **Dome** tab of the **Observatory** control window and then make sure that the **Slave Dome To Scope** option is re-enabled.
- **Park Telescope/Mount:** The next step is to park the mount and with it the telescope. This can be done via the [hand control](#) or again via *MaxIm DL*. For the latter you have to click **Park** in the **Telescope** tab of the **Observatory** control window.

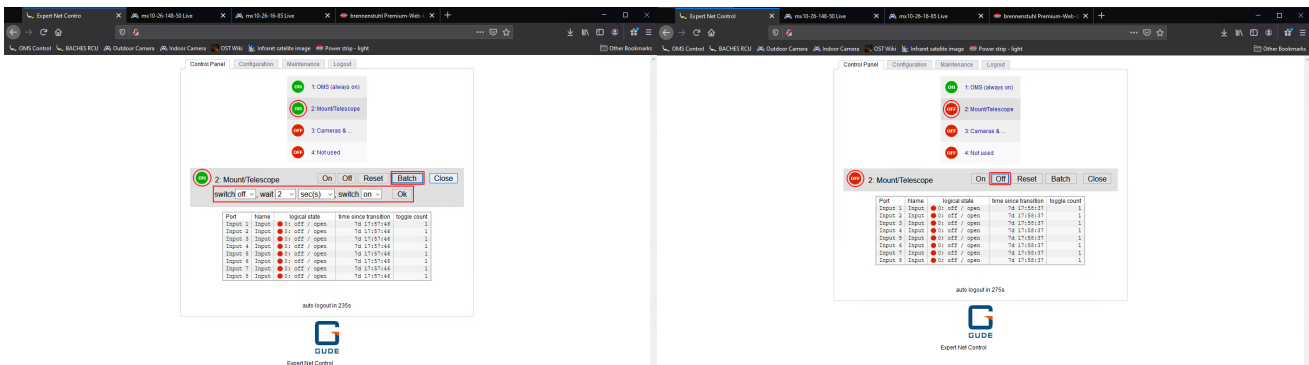
Shutdown

Once the telescope is parked, the cameras are warmed up to ambient temperature, and the dome is closed, the shutdown of the observatory can be started. The following steps are necessary:

- **Disconnect *MaxIm DL*:**
 - Cameras: Again, simply click on **Disconnect** in the **Setup** tab of the **Camera Control** window.
 - Dome, Mount/Telescope & Focuser: In the **Setup** tab of the **Observatory** control window,

click on the **Disconnect** buttons of the respective devices or click **Disconnect All** right away.

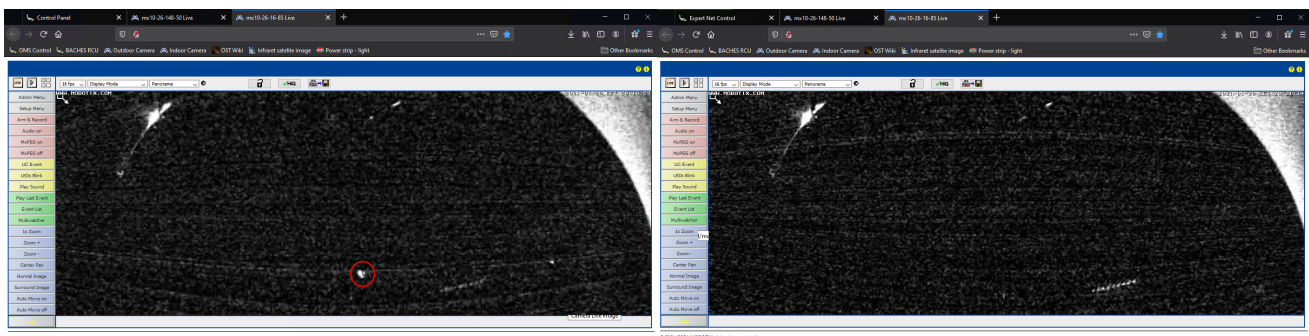
- **Close MaxIm DL**
- **Close PWI3**
- **Shutdown the All-Sky-Monitor:** First stop the image series by clicking **Stop Capture** in the **SBIG AIISky-340** software, wait until the last image has been downloaded and then close this software as well.
- When the cameras are back to ambient temperature, click **Off** next to **Cameras &...** in the OMS control panel tab of the web browser.



Web browser with OMS control panel: turn off mount - step 1

Web browser with OMS control panel: turn off mount - step 2

- **Shut down telescope/mount:** In the same tab of the web browser, first click on the **Mount/Telescope** item. After that, the following two steps have to be executed:
 1. click on the **Batch** button and then make sure that the settings are as follows: **switch off, wait 3 sec(s), switch on** (see photo above). Then click on **Ok**. The status indicator will briefly go to red and then change back to green. This is perfectly normal and expected.
 2. Wait at least 20 seconds for the mount to shut down. You can look at the internal webcam to check. When parked, the mount's indicator light is in the center of the camera's field of view (see photo below). If the indicator light is off, the mount has successfully shut down. You can then click **Off**. The status indicator will then change back to red and remain so.



Indoor camera: mount on

indoor-camera: mount-off

- **Close web browser]**
- **Log out user**

Problems and their solution

A compilation of problem solutions to known error sources can be found in our article [Known error sources and their solution](#).

From:

<https://polaris.astro.physik.uni-potsdam.de/wiki/> - **OST Wiki**

Permanent link:

https://polaris.astro.physik.uni-potsdam.de/wiki/doku.php?id=en:ost:telescope:handling_new&rev=1746043751

Last update: **2025/04/30 20:09**

