

 **Fix Me!** This website is still incomplete and under construction.

## OST 2.0 operation



OST 2.0 - Our new Telescope a CDK20 (Planewave)

## Security remarks

- **NEVER** look at the Sun with a telescope without a proper sun filter. This can lead to **irreparable damage** of your eyes and the optical instruments! The OST is not designed for observations of the Sun, so never point it to the Sun!
- **WATCH THE CABLES!** The user-friendliness of the telescope is based on a high automation of the components, which implies the need of some cables. To avoid getting caught in the cables connecting the telescope and the applied instruments, pay attention to them especially during rotations of the telescope.
- Always close the door to the roof because the hatch of the dome could collide with it, which could damaged both.

## General remarks

The observatory can operated complete remotely or semi remotely (being locally in the observatory, using some of the remote capabilities). The handling of the individual components of the observatory is briefly explained in the following, starting with the manual controls before the remote capabilities

are discussed.

## The dome and the roof

Information on the dome and the roof can be found in a separate [article](#).

## Manual operation

### Switch on the observatory

- remove the covers (if any) of the telescope's main and secondary mirrors and place them on the movable storage container or one of the desks
- press the On / Off button at the telescope's mounting and wait until the booting process is completed



Control unit at the mounting

### Open the dome

- use the dome remote control to first open the shutter
- as needed, open the horizontal hatch

### The Mount: GM4000 QCI

A description of the hand terminal, including some aspects of the operating system are described in a separated [article](#).

### Setting the time

For the correct calculation of the object positions, the telescope needs to know the current time. As the internal clock is often ahead of the actual time, it needs to be corrected before each observation.

To set the date and time, use the hand terminal:

```
MENU - Local Data - Clock - Date and Time
```

In the following screen one can set the time (accurate to the whole seconds) with the numeric keys. It is useful to have a radio clock available or to use an Internet service, such as [this one](#). Set a time approximately 30 seconds ahead of the current time and wait until the time set on the hand terminal is reached, then press **ENTER** to confirm.

## Remote operation



Observatory Management System (OMS)

The remote capabilities of the observatory are provided by the Observatory Management System (OMS), which is the large metallic box right above the left desk in the dome. The in- and outdoor webcams, the all-sky monitor, as well as the temperature regulations and ventilation system of the mirrors can only be operated by means of the OMS.

## Log in

The OMS is accessible by means of the Remote Desktop Protocol (RDP). However, the login is restricted to the local IP address space. Thus, one first has to login to one of the Linux machines from the astro physics department preferentially via ssh. For the lab course, one can use the laboratory computer a12. A [how-to](#) explaining the ssh login is available.

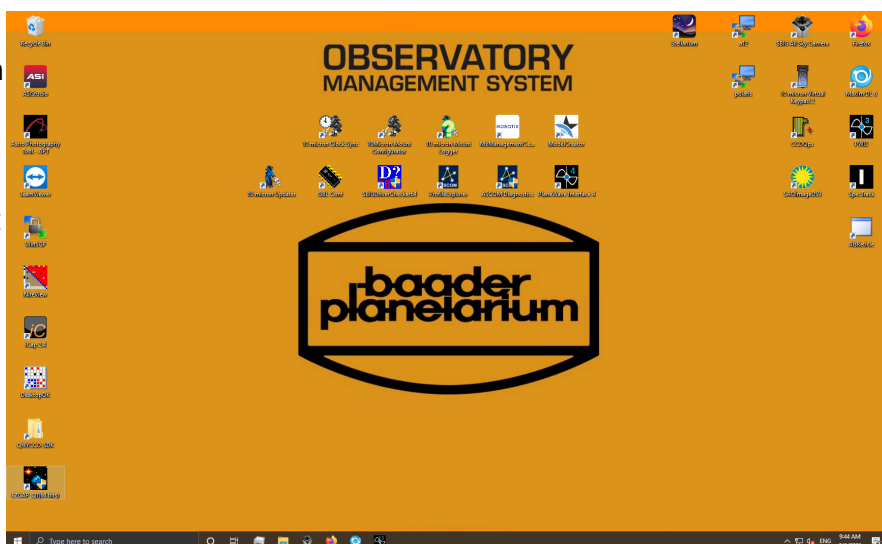
To use RDP from a Linux computer, we recommend Remmina, which is available on all our Linux Installations. An example configuration for Remmina is describe in this [article](#).

## Startup

After logging in to the OMS you will see the following desktop. If the icons are not so nicely arranged, the configuration shown, to which

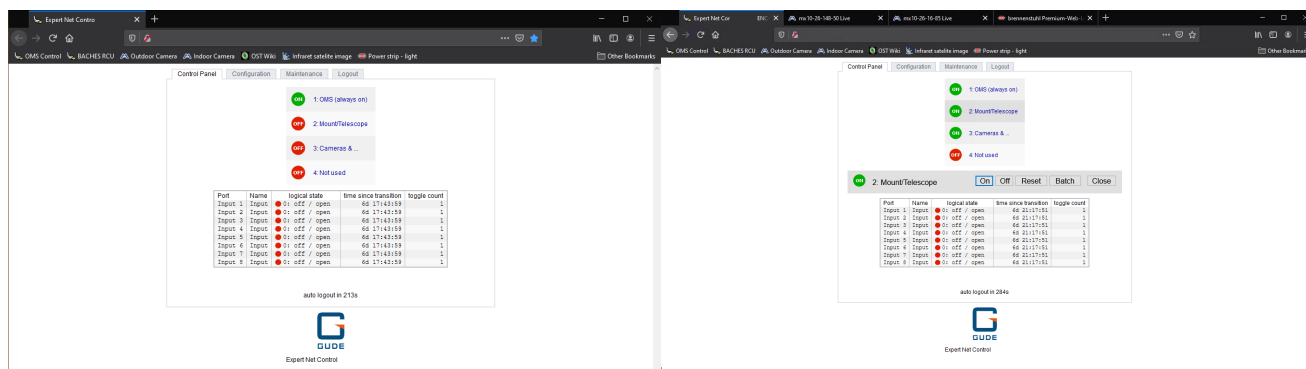
we will refer here in part, can be restored using the program *DesktopOK*.

The most important programs are grouped in the upper right corner of the desktop, while the programs that are not used so often are arranged on the left side. The programs in the middle of the desktop are usually not relevant for normal operation. The very most important programs are also placed in the taskbar.



## Powering up and booting devices

The first thing to do is to start Firefox. Some important devices of the observatory bring their own web interface and can be accessed through web browser. Firefox can be started by clicking on the icon in the upper right corner of the desktop or alternatively from the taskbar. The start page shows the OMS control menu (see below).

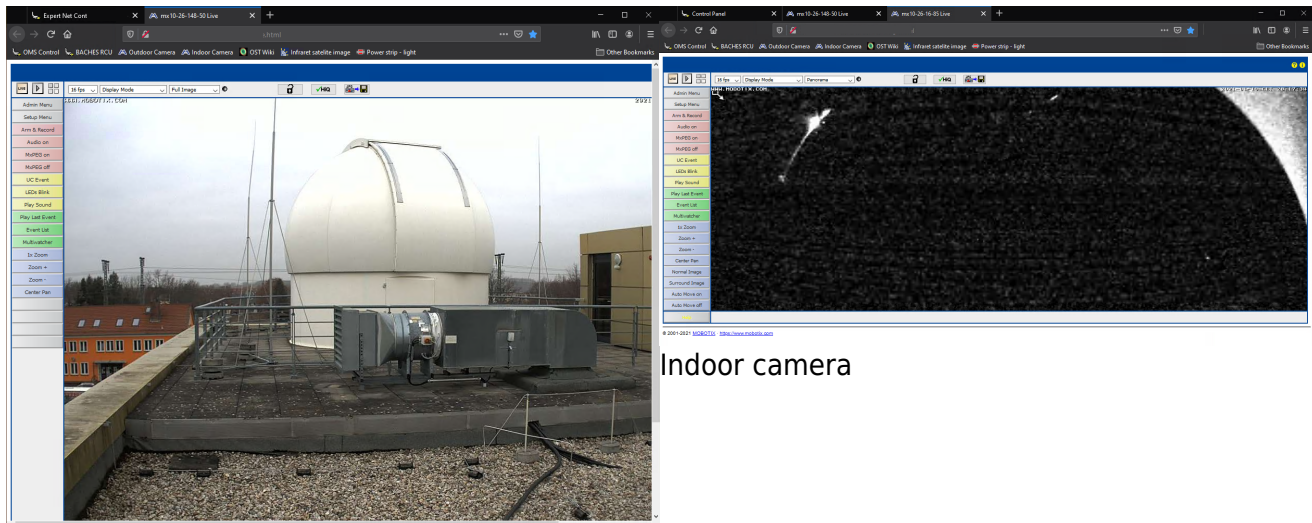


As shown in the figure above, four devices can be switched using the control menu. In position 1 is the OMS itself, which of course may never be switched off and is therefore always highlighted in green. On position 2 is the telescope or the mount. The 3rd position is used to switch the cameras, the all-sky camera and all other electrical attachments to the telescope. The 4th position is currently not occupied by a device.

If you click on **Cameras &...**, for example, the buttons for switching on and off become visible. By clicking on **On**, the cameras and all other telescope attachments can be switched on. The corresponding entry is then colored green. After the observation and after you have shut down the cameras properly, you have to switch off the power supply of the cameras and all attachments again by clicking **Off**. For telescopes/mount the shutdown procedure is slightly different. More about this below.

## Get an overview

It is a good idea to take a look at the surveillance cameras. We have an indoor and an outdoor camera. These are likewise accessible over Firefox. To do this, click on **Outdoor Camera** or **Indoor Camera** in the bookmark toolbar at the top.



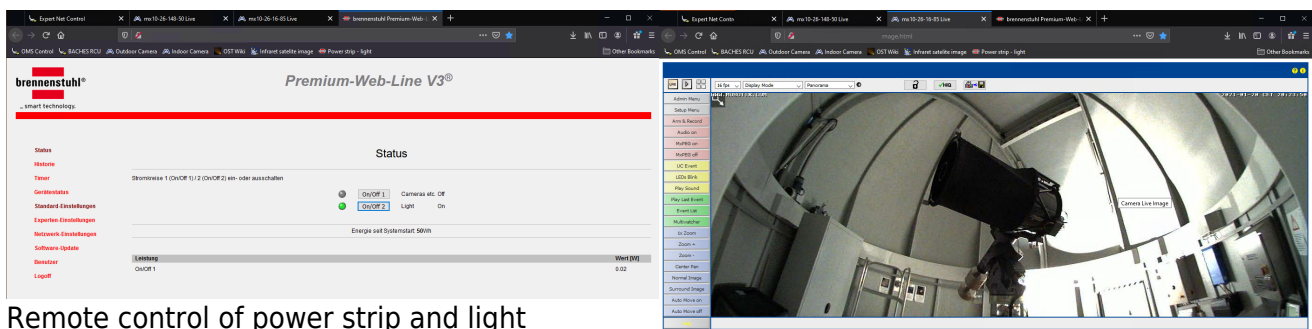
Indoor camera

Outdoor Camera

The outdoor camera is located on a pole a few meters away from the dome. On this pole is also the all-sky camera, which we will go into in more detail in a moment. You won't see much on the inside

camera at first, since the dome is still closed and normally no light is turned on inside the dome 🤔. On the picture above you can still see a little bit of light coming through a small gap at the dome hatch.

If you still want to get an overview of the inside of the dome, we also have the possibility to turn on the light in the dome via the web browser. To do this, click on **Power strip - light** in the bookmark bar at the top. On the page that opens, you have the possibility to turn on the light as well as to switch the power strip at the bottom of the telescope's pillar. In this way it is also possible to operate cameras that do not have a plug that fits into the OMS control hub, which is located on the telescope and which is switched via the OMS control window in the web browser (see above). To turn the power strip and light on and off simply click **On/Off 1** and **On/Off 2**, respectively. Below is the interior view again this time with the light on.

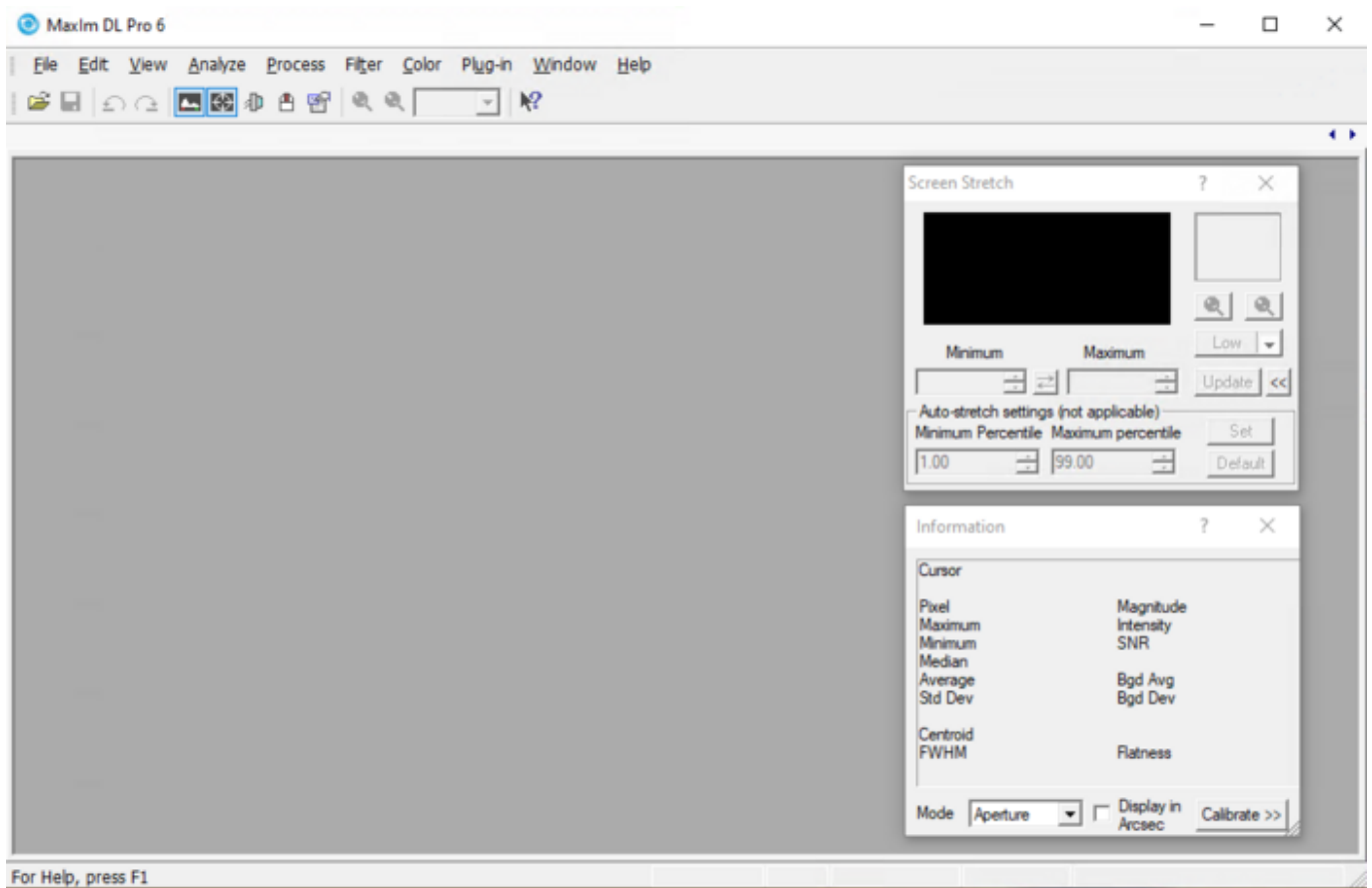


Remote control of power strip and light

Indoor camera with light on

## MaxIm DL

[MaxIm DL](#) is the core element in the control of the observatory. The dome, the mount, or telescope and all cameras can be controlled via this software. For details on [MaxIm DL](#) and how to connect it to the observatory components, please refer to the [MaxIm DL article](#).



## Opening the dome

The dome can be opened either by [hand control](#) or by [MaxIm DL](#). For the latter, just click on the **Open** button in the **Dome** tab of the **Observatory** control window of *MaxIm DL* and both the hatch and the shutter will open fully automatically.



## Ready for operation

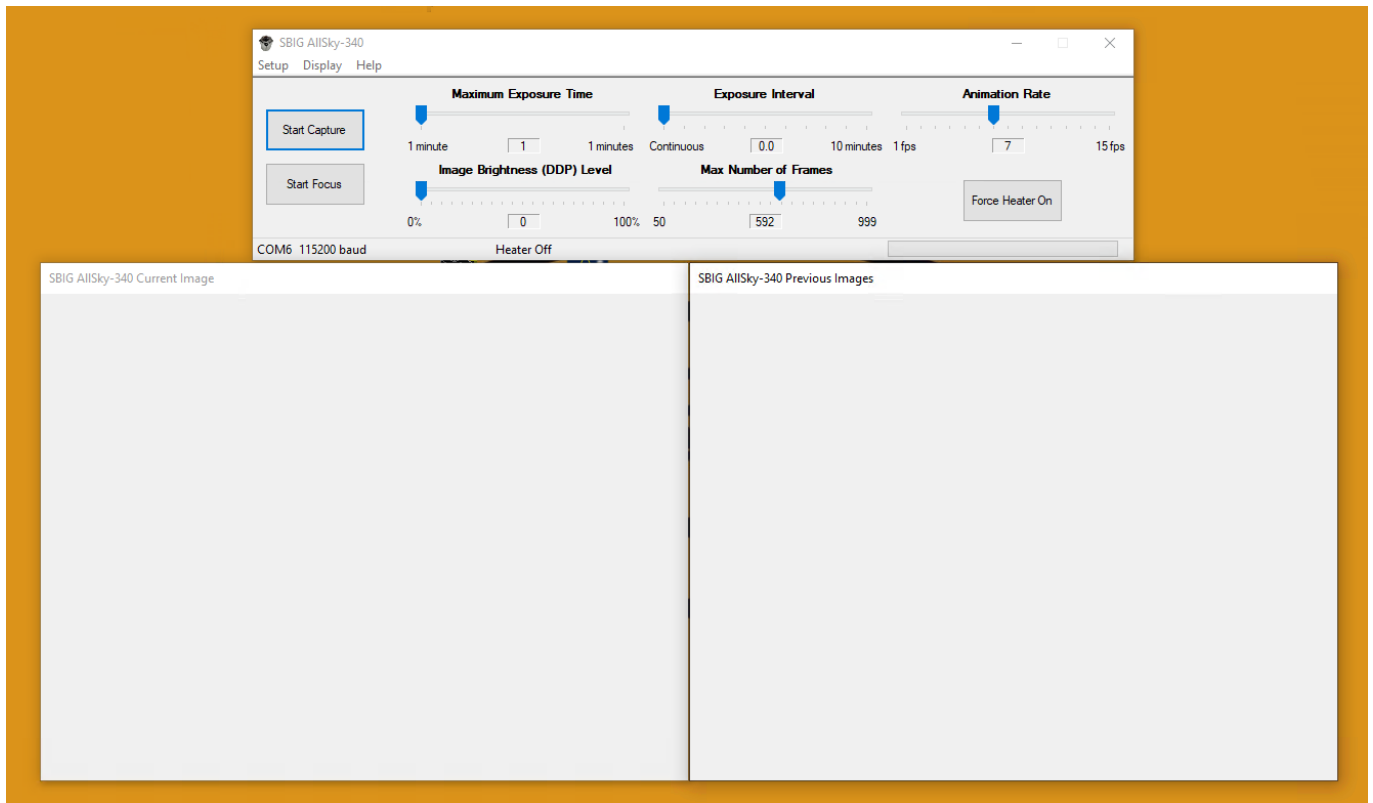
If you have done all these steps successfully, the observatory is basically ready for operation. In the following we will discuss which devices and software are still to be discovered and what

else can be done 😊.

## The All-Sky Monitor



The All-Sky-Monitor from SBIG offers the possibility to get a good impression of the given observing conditions. As soon as the power supply for the cameras is switched on, the software for controlling the all-sky camera can be started. The corresponding shortcut on the desktop is called **SBIG All Sky Camera**.



The All-Sky monitor is already focused and it is usually not necessary to adjust the default setting, so you can click **Start Capture** directly. The camera will start capturing images continuously. The current image is displayed in the **SBIG ALLSky-340 Current Image** window (on the left of the image above), while the **SBIG ALLSky-340 Previous Images** window (on the right of the image above) shows a video from the images already captured. The camera adjusts the exposure time automatically. Especially in darkness, you may have to wait a few exposures until the camera has adjusted the exposure time correctly and you can then see the surroundings and the night sky. The camera is connected to the OMS via a serial connection, which makes the connection stable but also very slow, so that it takes a while until the individual images are downloaded.

## Focusing & PWI3

How to focus the telescope and what the software *PWI3* has to do with it is described in the following [article](#).

## Observations

### Observations with the eyepiece

There are eyepieces with different focal lengths. Start with an eyepiece of the largest focal length, then focus and use the direction buttons

N - S - E - W

to move the object to the center of the field of view. Afterwards replace the eyepiece with one of lower focal length and refocus the telescope. After observing, remove the eyepiece and reattach one of the spectrographs or cameras with the appropriate adapter.

## Observations with a camera

- [Photometry](#)
- [Astrophotography](#)

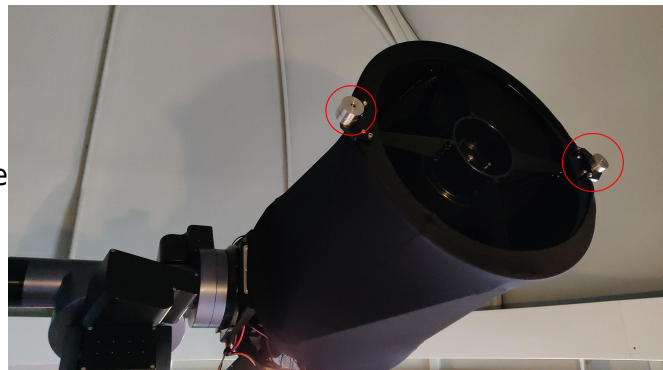
## Observations with the spectrographs

- [Spectrograph how-to](#)
- [Example spectra](#)

## Changing the instruments

When changing the instruments, two basic things have to be considered: On the one hand, the focuser has naturally only a limited adjustment range, so for different instruments also different adapters (M68 thread) are needed. In the article on [focusing](#), we go into more detail on how to calculate the ideal adapter length and also list the adapter lengths used for the most commonly used instruments.

Furthermore, the interchangeable balance weights at the front of the telescope should be adapted to the instrument in question. As shown in the image to the right, balance weights can be attached at two points. The configuration shown is for the STF8300M, while for the BACHES with the ST-8 another balance weight should be added. This balance weight should ideally be attached to the side away from the mount (the right side in the picture). For our QHY600M, one balance weight must be added on each side compared to the configuration in the picture. For observations with the eyepieces, all balance weights should be removed from the front and ideally some should be reattached at the back.



CDK20 with counterweights

Additional balance weights are located in the large metal cabinet. The balance weights can simply be screwed onto the existing ones. When handling the balance weights, the telescope should be placed in a position where it is facing



the ground as much as possible to prevent the balance weights from falling into the tube.

**A table configurations will follow soon...**

## After the observations

### Parking & warming up

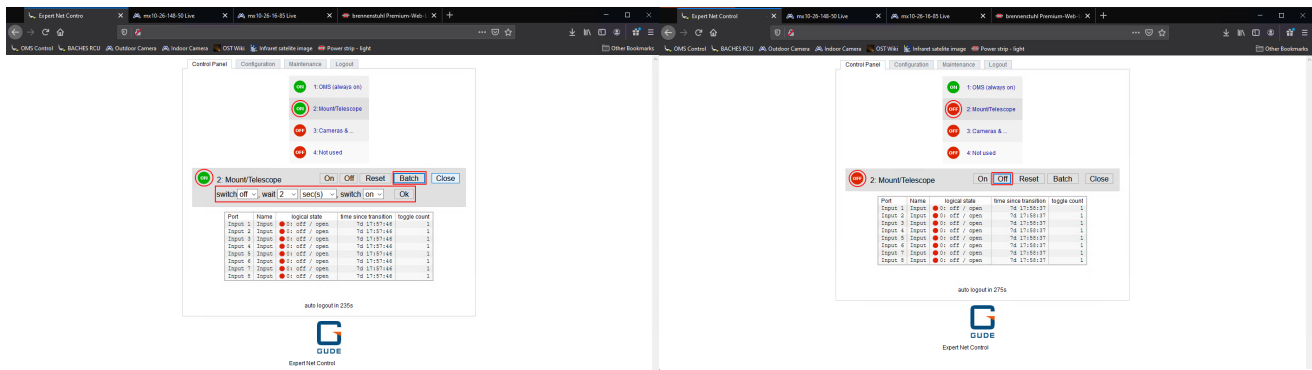
After the observation, the telescope must be returned to its original configuration. For this the following things have to be done:

- **Switch off camera cooling** (if applicable): First you should switch off the cooling of the cameras or shut them down. To do this, click **Warm Up** in the **Setup** tab of the **Camera Control** window of *MaxIm DL*.
- **Close Dome:** Then you should close the shutter and the hatch of the dome. To do this, the dome can be closed manually using the manual control, making sure that the flap is closed first and then the gate. Alternatively, you can close everything together with one click in *MaxIm DL*. To do this, click **Close** in the **Dome** tab of the **Observatory** control window and then make sure that the **Slave Dome To Scope** option is re-enabled.
- **Park Telescope/Mount:** The next step is to park the mount and with it the telescope. This can be done via the [hand control](#) or again via *MaxIm DL*. For the latter you have to click **Park** in the **Telescope** tab of the **Observatory** control window.

### Shutdown

Once the telescope is parked, the cameras are warmed up to ambient temperature, and the dome is closed, the shutdown of the observatory can be started. The following steps are necessary:

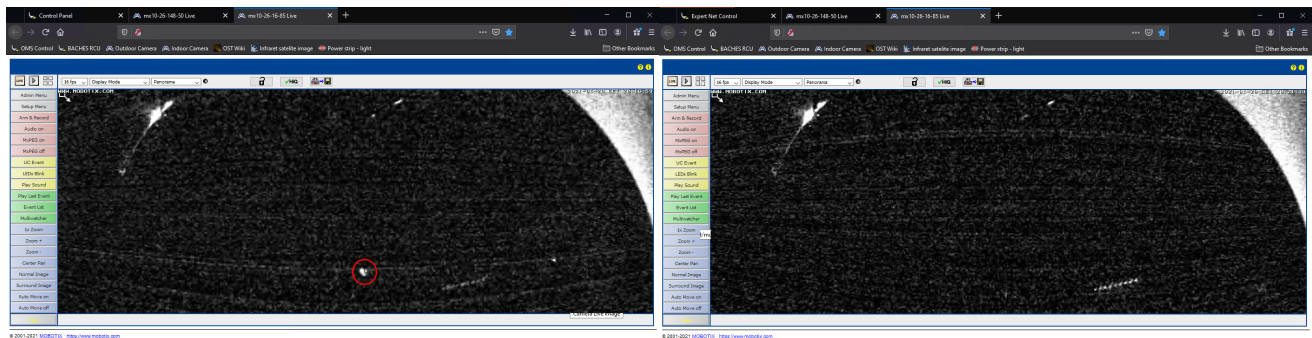
- **Disconnect *MaxIm DL*:**
  - Cameras: Again, simply click on **Disconnect** in the **Setup** tab of the **Camera Control** window.
  - Dome, Mount/Telescope & Focuser: In the **Setup** tab of the **Observatory** control window, click on the **Disconnect** buttons of the respective devices or click **Disconnect All** right away.
- **Close *MaxIm DL***
- **Close *PW13***
- **Shutdown the All-Sky-Monitor:** First stop the image series by clicking **Stop Capture** in the **SBIG AllSky-340** software, wait until the last image has been downloaded and then close this software as well.
- When the cameras are back to ambient temperature, click **Off** next to **Cameras &...** in the OMS control panel tab of the web browser.



Web browser with OMS control panel: turn off mount - step 1

Web browser with OMS control panel: turn off mount - step 2

- **Shut down telescope/mount:** In the same tab of the web browser, first click on the **Mount/Telescope** item. After that, the following two steps have to be executed:
  1. click on the **Batch** button and then make sure that the settings are as follows: **switch off**, **wait 2 sec(s)**, **switch on** (see photo above). Then click on **Ok**. The status indicator will briefly go to red and then change back to green. This is perfectly normal and expected.
  2. Wait at least 30 seconds for the mount to shut down. You can look at the internal webcam to check. When parked, the mount's indicator light is in the center of the camera's field of view (see photo below). If the indicator light is off, the mount has successfully shut down. You can then click **Off**. The status indicator will then change back to red and remain so.



Indoor camera: mount on

indoor-camera: mount-off

- **Close web browser]**
- **Log out user**

## Problems and their solution

A compilation of problem solutions to known error sources can be found in our article [Known error sources and their solution](#).

From: <https://polaris.astro.physik.uni-potsdam.de/wiki/> - OST Wiki

Permanent link: [https://polaris.astro.physik.uni-potsdam.de/wiki/doku.php?id=en:ost:telescope:handling\\_new&rev=1616001364](https://polaris.astro.physik.uni-potsdam.de/wiki/doku.php?id=en:ost:telescope:handling_new&rev=1616001364)

Last update: 2021/03/17 17:16

