

# Focusing

A good focused telescope is essential for each successful observation, especially if deep-sky exposures shall be taken. With a small amount of exercise, an optimal focus can be easily found within a few minutes. The following small manual shall give assistant for this purpose.

## General remarks

The telescope is focused via an Electronical Focuser Assembly (EFA), which can be controlled manually via a hand terminal or via the Observatory Management System (OMS). Since the EFA has a limited adjustment range (33mm), different adapters (M68) can be mounted on the EFA, so that the focus can be achieved with different instruments.

### Calculation of the ideal adapter

The back focus of the telescope is 147 mm (behind the EFA). The Zeiss quick changer used has a back focus of 25 mm. The length of the ideal adapter  $D$  is therefore calculated as follows:

$$D = 147 - 25 - 33/2 - C,$$

where  $C$  is the backfocus of the respective instrument. The STF-8300 together with all attachments has a backfocus of 57.5 mm. Therefore, the ideal adapter for the STF-8300 is 50mm long.

### Empirical values with regard to the focus:

| Instrument                | Adapter [mm] | Position of the EFA [ $\mu\text{m}$ ] |
|---------------------------|--------------|---------------------------------------|
| QHY600M                   | 20+10        | 16900                                 |
| SFT-8300                  | 40+10        | 9500                                  |
| Canon 700D                | 20+10        | 13000                                 |
| Baches + QHY268M          | 10           | 15000                                 |
| Baches + QHY268M + Barlow | 20           | 17500                                 |
| DADOS + QHY268M           | 0            | 5000                                  |
| Hyperionokular: 36mm      | 80           | 14500                                 |
| Hyperionokular: 22mm      | 80           |                                       |
| Hyperionokular: 13mm      | 80           | 25200                                 |
| Canon + Superzoom         | 80           | 19550                                 |

## Focus using the hand terminal

A hand-held terminal ([figure 1](#)) is available for manual operation of the EFA. The hand-held terminal is located in the movable storage container in the dome. The hand terminal has to be mounted on the black control box labeled *Electronic Focusing Accessory* on the back of the telescope. The cable of the hand-held terminal needs to be plugged into the port labeled *H/C* (see [figure 2](#)), while the handheld terminal as such should be hung on a silver bolt in the direct vicinity of the control box. **If the hand**

**terminal is mounted, control via the OMS is not possible**, therefore the hand terminal is usually not mounted to the telescope.

With the buttons In and Out of the hand terminal, the EFA can be moved in and out. The remaining buttons are for a derotator, which our telescope does not need. Therefore, these buttons are without function.



Fig. 1: Hand terminal for the EFA

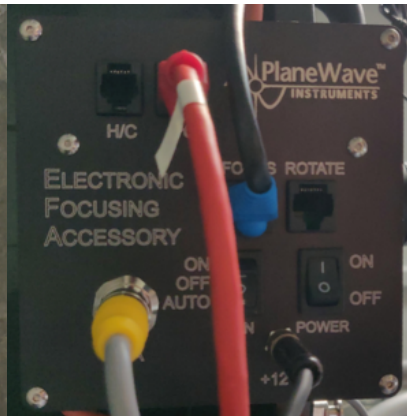


Fig. 2: The control box of the EFA

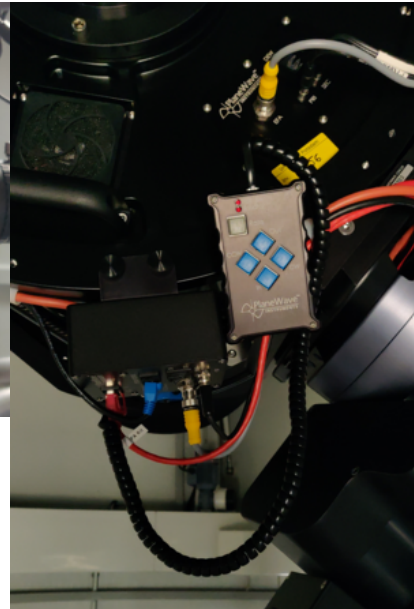
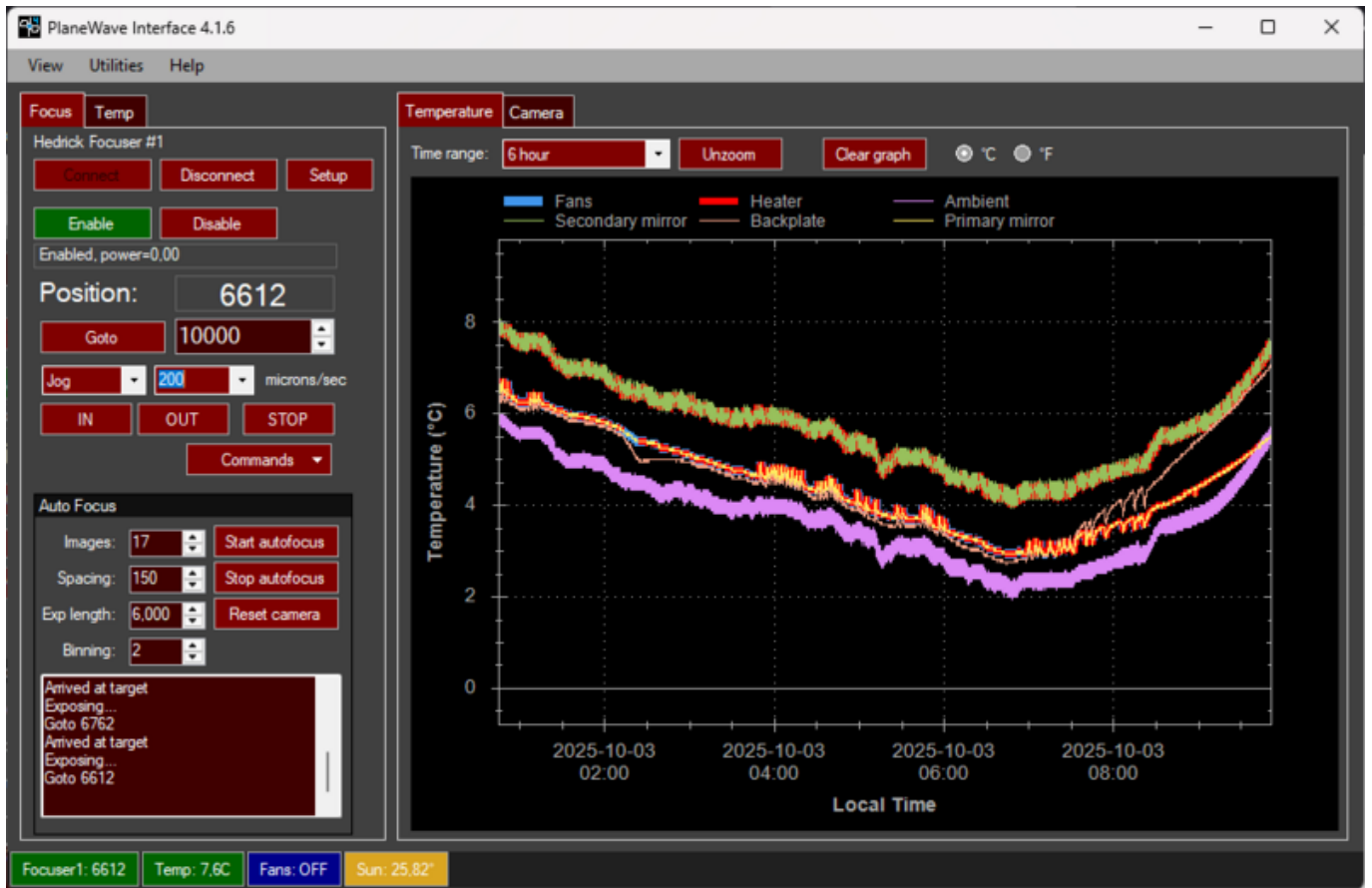


Fig. 3: Back of the telescope with mounted hand terminal

## Focusing with the Observatory Management System (OMS)

The focusing by means of the OMS is done by the program *PWI4*, which besides focusing also controls the fans and the heaters installed in the telescope. The last two points are described in more detail in the article [temperature regulation](#).




The operation of the EFA is basically self-explanatory. The current position can be found in the field Position, while the EFA can be moved via the buttons IN and OUT. The speed of the focuser can be set under "Jog", by inputting a value next to it. We recommend the standard setting of 200 micron/s. Using the GOTO menu, the EFA can be moved to a specific position. An ongoing movement can be stopped at any time using the STOP button. The temporal course of the temperature of the main mirror, the support of the main mirror, the secondary mirror and the ambient temperature can be shown and hidden using the buttons SHOW and HIDE, respectively.

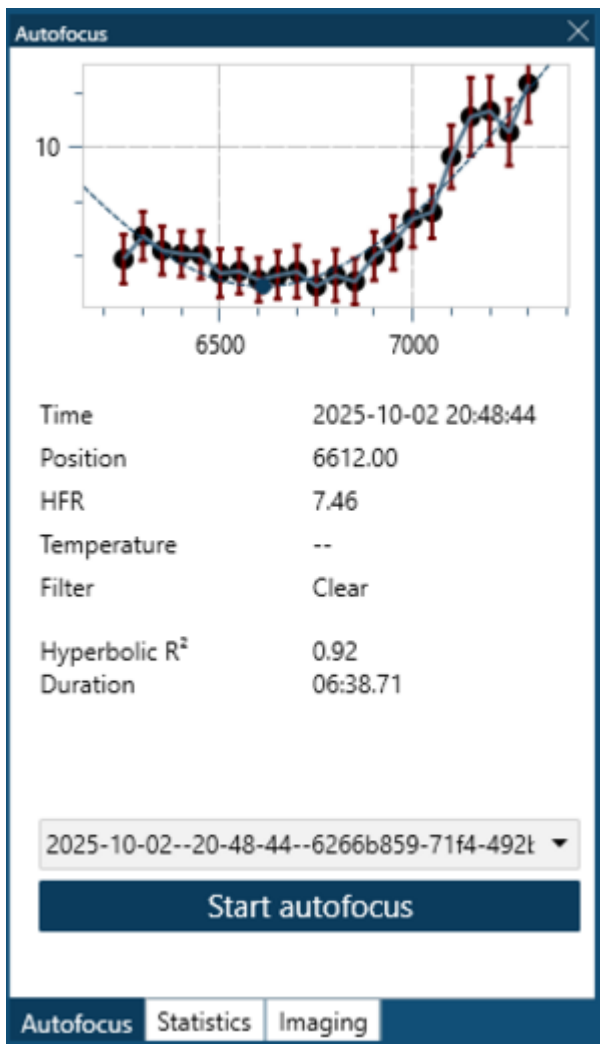
### Auto Focus

Manual focusing can be tedious, even when a specific focus point is already known from previous observations. For this reason, several programmes offer automatic focusing methods. Here, we list focusing with PWI4, MaximDL, NINA and others. The programme used depends on the observer's preferences and the target.

### Maxim DL

 This part needs to be written.

### NINA

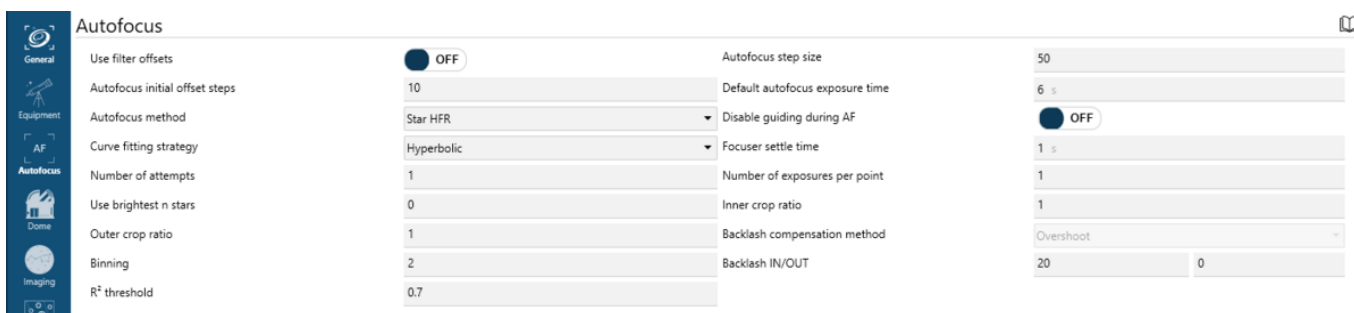


In *NINA* the autofocus can be run by selecting *Imaging* and then select on the right-hand side autofocus. After selecting autofocus *NINA* will automatically start the process. Note however, that the focuser needs to be started via *PWI4* and equipped via the **Equipment** tab. Furthermore *NINA* will use whatever filter is currently selected. A successful autofocus run can be seen on the left side, where a clear hyperbolic relation is visible. The run took about 6:30min and determined 6612 as the optimal focus for the clear filter.

Under *Options*>*Autofocus* the settings to finetune the autofocus can be found. An image can be seen below the documentation of these settings:

- **Use filter offsets** lets you apply predefined offsets per filter instead of refocusing every time. (Currently not available, test observation needed). Default: OFF
- **Autofocus initial offset steps** determines how far the focuser moves out initially to start the autofocus. Default: 10
- **Autofocus method**: Self explanatory. Default: Star HFR (Half-Flux Radius of stars)
- **Curve fitting strategy**: Function to fit your measured data points. Default: Hyperbolic
- **Number of attempts**: How many times *NINA* retries autofocus if the first attempt fails. Default: 1
- **Use brightest n stars**: If >0, only the n brightest stars instead of all detected stars (Good for poor star fields/Noisy images). Default: 0
- **Outer crop ratio**: If 1 the overscan region is cropped. If -1 the overscan region will be included. Default: 1

- **Binning**: Pixel binning during autofocus. Default: 2x2
- **R<sup>2</sup> threshold**: Minimum quality fit for the autofocus curve before retrying. Default: 0.8
- **Autofocus step size** determines how far the focuser moves between samples. Default: 150
- **Default autofocus exposure time**: Exposure duration (in seconds) per autofocus frame. Default: 6s. Needs to be adapted for other filters.
- **Disable guiding during AF**: Turns off guiding while autofocus runs. Default: off
- **Focuser settle time**: Delay after a focuser move to allow mechanical settling. Default: 1
- **Number of exposures per point**: How many frames are taken at each step, then averaged. Default: 1
- **Inner crop ratio**: Ratio of the frame that is used for detecting stars. Default: 0.5 = 50%. Can be selected within [0.2,1]
- **Backlash compensation method**: Method used to cancel gear play. Available are Overshoot and Disable. Default: Not available/Overshoot.
- **Backlash IN/OUT**: Step count used to clear backlash when moving in or out. Default: 20,0



### PWI 4

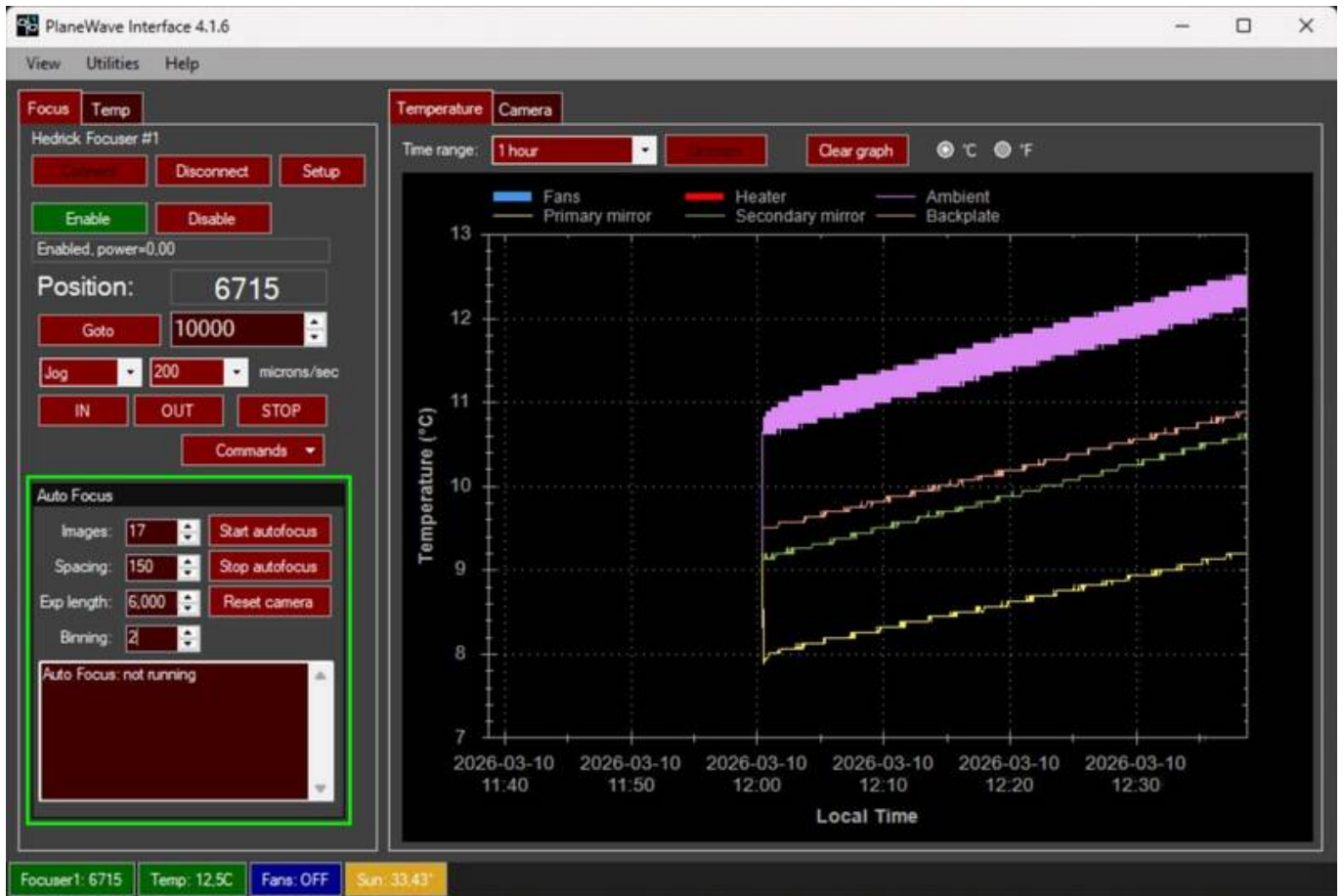
PWI4 also offers the possibility of automatic focusing. For this purpose, PWI4 can connect to ASCOM camera drivers. The corresponding setting can be changed in the Camera tab of the settings dialog. Set **Selected device** to ASCOM camera and select the corresponding camera driver from the **ASCOM driver** drop down menu.


Afterwards, one can adjust the auto focus settings in **Auto Focus** section in the **Focus** tab on the main window of PWI4. One has to set Images, which is the number of focusing steps that should be performed. Spacing defines the step size in micrometers that the EFA should move between each focusing step. The exposure time in seconds and the image binning must be specified at Exp length and Binning, respectively. So far the following settings have proven to be useful:

```

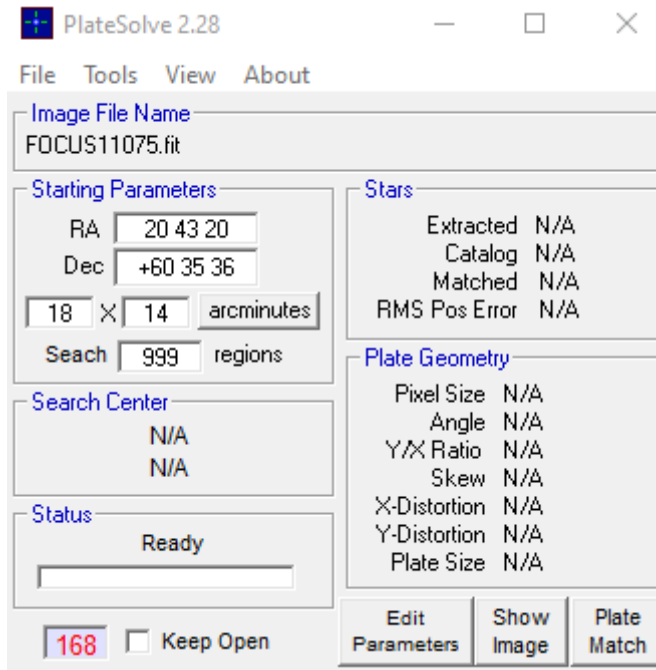
Images      = 17
Spacing     = 150
Exp length  = must be chosen depending on the object/filter (6s for stars
using clear filter is a good start)
Binning     = 2

```



 The following needs a revision...

After starting the auto focus, *PWI4* will perform the individual focusing steps, move the EFA by the Spacing and take one image at a time. Afterwards, *PWI4* will start the program *PlateSolve* (see below), which will analyze each image, search for stars, determine the diameter of these stars and estimate the focus. This is then listed in a table.



In the following we show an example of a successful and an unsuccessful auto focus run:

**Successful auto focus:**

| File Name      | Focus | Diam  | Stars |
|----------------|-------|-------|-------|
| FOCUS09495.fit | 9491  | 20.89 | 5     |
| FOCUS09440.fit | 9440  | 18.34 | 6     |
| FOCUS09750.fit | 9750  | 15.48 | 4     |
| FOCUS09994.fit | 9940  | 14.49 | 4     |
| FOCUS10291.fit | 10291 | 12.74 | 4     |
| FOCUS10240.fit | 10240 | 10.52 | 4     |
| FOCUS10390.fit | 10390 | 8.9   | 5     |
| FOCUS10594.fit | 10541 | 7.87  | 4     |
| FOCUS10891.fit | 10891 | 6.38  | 5     |
| FOCUS10840.fit | 10840 | 5.9   | 5     |
| FOCUS10990.fit | 10990 | 5.77  | 4     |
| FOCUS11140.fit | 11140 | 5.27  | 4     |
| FOCUS11291.fit | 11291 | 5.71  | 4     |
| FOCUS11440.fit | 11440 | 11.53 | 4     |
| FOCUS11590.fit | 11590 | 13.80 | 4     |
| FOCUS11741.fit | 11741 | 16.02 | 4     |
| FOCUS11890.fit | 11890 | 17.78 | 4     |

Table with the results

Plot visualizing the quality of the focus (V curve plot)

Result: well focused star

**Unsuccessful auto focus:**

| File Name      | Focus | Diam | Stars |
|----------------|-------|------|-------|
| FOCUS02020.fit | 0200  | 0    | 0     |
| FOCUS02320.fit | 0230  | 0    | 0     |
| FOCUS02520.fit | 0250  | 0    | 0     |
| FOCUS02720.fit | 0270  | 0    | 0     |
| FOCUS02920.fit | 0290  | 0    | 0     |
| FOCUS03120.fit | 0310  | 0    | 0     |
| FOCUS03320.fit | 0330  | 0    | 0     |
| FOCUS03520.fit | 0350  | 0    | 0     |
| FOCUS03720.fit | 0370  | 0    | 0     |
| FOCUS03920.fit | 0390  | 0    | 0     |
| FOCUS04120.fit | 0410  | 0    | 0     |
| FOCUS04320.fit | 0430  | 0    | 0     |
| FOCUS04520.fit | 0450  | 0    | 0     |
| FOCUS04720.fit | 0470  | 0    | 0     |
| FOCUS04920.fit | 0490  | 0    | 0     |
| FOCUS05120.fit | 0510  | 0    | 0     |
| FOCUS05320.fit | 0530  | 0    | 0     |
| FOCUS05520.fit | 0550  | 0    | 0     |
| FOCUS05720.fit | 0570  | 0    | 0     |
| FOCUS05920.fit | 0590  | 0    | 0     |
| FOCUS06120.fit | 0610  | 0    | 0     |
| FOCUS06320.fit | 0630  | 0    | 0     |
| FOCUS06520.fit | 0650  | 0    | 0     |
| FOCUS06720.fit | 0670  | 0    | 0     |
| FOCUS06920.fit | 0690  | 0    | 0     |
| FOCUS07120.fit | 0710  | 0    | 0     |
| FOCUS07320.fit | 0730  | 0    | 0     |
| FOCUS07520.fit | 0750  | 0    | 0     |
| FOCUS07720.fit | 0770  | 0    | 0     |
| FOCUS07920.fit | 0790  | 0    | 0     |
| FOCUS08120.fit | 0810  | 0    | 0     |
| FOCUS08320.fit | 0830  | 0    | 0     |
| FOCUS08520.fit | 0850  | 0    | 0     |
| FOCUS08720.fit | 0870  | 0    | 0     |
| FOCUS08920.fit | 0890  | 0    | 0     |
| FOCUS09120.fit | 0910  | 0    | 0     |
| FOCUS09320.fit | 0930  | 0    | 0     |
| FOCUS09520.fit | 0950  | 0    | 0     |
| FOCUS09720.fit | 0970  | 0    | 0     |
| FOCUS09920.fit | 0990  | 0    | 0     |
| FOCUS10120.fit | 1010  | 0    | 0     |
| FOCUS10320.fit | 1030  | 0    | 0     |
| FOCUS10520.fit | 1050  | 0    | 0     |
| FOCUS10720.fit | 1070  | 0    | 0     |
| FOCUS10920.fit | 1090  | 0    | 0     |
| FOCUS11120.fit | 1110  | 0    | 0     |
| FOCUS11320.fit | 1130  | 0    | 0     |
| FOCUS11520.fit | 1150  | 0    | 0     |
| FOCUS11720.fit | 1170  | 0    | 0     |
| FOCUS11920.fit | 1190  | 0    | 0     |
| FOCUS12120.fit | 1210  | 0    | 0     |
| FOCUS12320.fit | 1230  | 0    | 0     |
| FOCUS12520.fit | 1250  | 0    | 0     |
| FOCUS12720.fit | 1270  | 0    | 0     |
| FOCUS12920.fit | 1290  | 0    | 0     |
| FOCUS13120.fit | 1310  | 0    | 0     |
| FOCUS13320.fit | 1330  | 0    | 0     |
| FOCUS13520.fit | 1350  | 0    | 0     |
| FOCUS13720.fit | 1370  | 0    | 0     |
| FOCUS13920.fit | 1390  | 0    | 0     |
| FOCUS14120.fit | 1410  | 0    | 0     |
| FOCUS14320.fit | 1430  | 0    | 0     |
| FOCUS14520.fit | 1450  | 0    | 0     |
| FOCUS14720.fit | 1470  | 0    | 0     |
| FOCUS14920.fit | 1490  | 0    | 0     |
| FOCUS15120.fit | 1510  | 0    | 0     |
| FOCUS15320.fit | 1530  | 0    | 0     |
| FOCUS15520.fit | 1550  | 0    | 0     |
| FOCUS15720.fit | 1570  | 0    | 0     |
| FOCUS15920.fit | 1590  | 0    | 0     |
| FOCUS16120.fit | 1610  | 0    | 0     |
| FOCUS16320.fit | 1630  | 0    | 0     |
| FOCUS16520.fit | 1650  | 0    | 0     |
| FOCUS16720.fit | 1670  | 0    | 0     |
| FOCUS16920.fit | 1690  | 0    | 0     |
| FOCUS17120.fit | 1710  | 0    | 0     |
| FOCUS17320.fit | 1730  | 0    | 0     |
| FOCUS17520.fit | 1750  | 0    | 0     |
| FOCUS17720.fit | 1770  | 0    | 0     |
| FOCUS17920.fit | 1790  | 0    | 0     |
| FOCUS18120.fit | 1810  | 0    | 0     |
| FOCUS18320.fit | 1830  | 0    | 0     |
| FOCUS18520.fit | 1850  | 0    | 0     |
| FOCUS18720.fit | 1870  | 0    | 0     |
| FOCUS18920.fit | 1890  | 0    | 0     |
| FOCUS19120.fit | 1910  | 0    | 0     |
| FOCUS19320.fit | 1930  | 0    | 0     |
| FOCUS19520.fit | 1950  | 0    | 0     |
| FOCUS19720.fit | 1970  | 0    | 0     |
| FOCUS19920.fit | 1990  | 0    | 0     |
| FOCUS20120.fit | 2010  | 0    | 0     |
| FOCUS20320.fit | 2030  | 0    | 0     |
| FOCUS20520.fit | 2050  | 0    | 0     |
| FOCUS20720.fit | 2070  | 0    | 0     |
| FOCUS20920.fit | 2090  | 0    | 0     |
| FOCUS21120.fit | 2110  | 0    | 0     |
| FOCUS21320.fit | 2130  | 0    | 0     |
| FOCUS21520.fit | 2150  | 0    | 0     |
| FOCUS21720.fit | 2170  | 0    | 0     |
| FOCUS21920.fit | 2190  | 0    | 0     |
| FOCUS22120.fit | 2210  | 0    | 0     |
| FOCUS22320.fit | 2230  | 0    | 0     |
| FOCUS22520.fit | 2250  | 0    | 0     |
| FOCUS22720.fit | 2270  | 0    | 0     |
| FOCUS22920.fit | 2290  | 0    | 0     |
| FOCUS23120.fit | 2310  | 0    | 0     |
| FOCUS23320.fit | 2330  | 0    | 0     |
| FOCUS23520.fit | 2350  | 0    | 0     |
| FOCUS23720.fit | 2370  | 0    | 0     |
| FOCUS23920.fit | 2390  | 0    | 0     |
| FOCUS24120.fit | 2410  | 0    | 0     |
| FOCUS24320.fit | 2430  | 0    | 0     |
| FOCUS24520.fit | 2450  | 0    | 0     |
| FOCUS24720.fit | 2470  | 0    | 0     |
| FOCUS24920.fit | 2490  | 0    | 0     |
| FOCUS25120.fit | 2510  | 0    | 0     |
| FOCUS25320.fit | 2530  | 0    | 0     |
| FOCUS25520.fit | 2550  | 0    | 0     |
| FOCUS25720.fit | 2570  | 0    | 0     |
| FOCUS25920.fit | 2590  | 0    | 0     |
| FOCUS26120.fit | 2610  | 0    | 0     |
| FOCUS26320.fit | 2630  | 0    | 0     |
| FOCUS26520.fit | 2650  | 0    | 0     |
| FOCUS26720.fit | 2670  | 0    | 0     |
| FOCUS26920.fit | 2690  | 0    | 0     |
| FOCUS27120.fit | 2710  | 0    | 0     |
| FOCUS27320.fit | 2730  | 0    | 0     |
| FOCUS27520.fit | 2750  | 0    | 0     |
| FOCUS27720.fit | 2770  | 0    | 0     |
| FOCUS27920.fit | 2790  | 0    | 0     |
| FOCUS28120.fit | 2810  | 0    | 0     |
| FOCUS28320.fit | 2830  | 0    | 0     |
| FOCUS28520.fit | 2850  | 0    | 0     |
| FOCUS28720.fit | 2870  | 0    | 0     |
| FOCUS28920.fit | 2890  | 0    | 0     |
| FOCUS29120.fit | 2910  | 0    | 0     |
| FOCUS29320.fit | 2930  | 0    | 0     |
| FOCUS29520.fit | 2950  | 0    | 0     |
| FOCUS29720.fit | 2970  | 0    | 0     |
| FOCUS29920.fit | 2990  | 0    | 0     |
| FOCUS30120.fit | 3010  | 0    | 0     |
| FOCUS30320.fit | 3030  | 0    | 0     |
| FOCUS30520.fit | 3050  | 0    | 0     |
| FOCUS30720.fit | 3070  | 0    | 0     |
| FOCUS30920.fit | 3090  | 0    | 0     |
| FOCUS31120.fit | 3110  | 0    | 0     |
| FOCUS31320.fit | 3130  | 0    | 0     |
| FOCUS31520.fit | 3150  | 0    | 0     |
| FOCUS31720.fit | 3170  | 0    | 0     |
| FOCUS31920.fit | 3190  | 0    | 0     |
| FOCUS32120.fit | 3210  | 0    | 0     |
| FOCUS32320.fit | 3230  | 0    | 0     |
| FOCUS32520.fit | 3250  | 0    | 0     |
| FOCUS32720.fit | 3270  | 0    | 0     |
| FOCUS32920.fit | 3290  | 0    | 0     |
| FOCUS33120.fit | 3310  | 0    | 0     |
| FOCUS33320.fit | 3330  | 0    | 0     |
| FOCUS33520.fit | 3350  | 0    | 0     |
| FOCUS33720.fit | 3370  | 0    | 0     |
| FOCUS33920.fit | 3390  | 0    | 0     |
| FOCUS34120.fit | 3410  | 0    | 0     |
| FOCUS34320.fit | 3430  | 0    | 0     |
| FOCUS34520.fit | 3450  | 0    | 0     |
| FOCUS34720.fit | 3470  | 0    | 0     |
| FOCUS34920.fit | 3490  | 0    | 0     |
| FOCUS35120.fit | 3510  | 0    | 0     |
| FOCUS35320.fit | 3530  | 0    | 0     |
| FOCUS35520.fit | 3550  | 0    | 0     |
| FOCUS35720.fit | 3570  | 0    | 0     |
| FOCUS35920.fit | 3590  | 0    | 0     |
| FOCUS36120.fit | 3610  | 0    | 0     |
| FOCUS36320.fit | 3630  | 0    | 0     |
| FOCUS36520.fit | 3650  | 0    | 0     |
| FOCUS36720.fit | 3670  | 0    | 0     |
| FOCUS36920.fit | 3690  | 0    | 0     |
| FOCUS37120.fit | 3710  | 0    | 0     |
| FOCUS37320.fit | 3730  | 0    | 0     |
| FOCUS37520.fit | 3750  | 0    | 0     |
| FOCUS37720.fit | 3770  | 0    | 0     |
| FOCUS37920.fit | 3790  | 0    | 0     |
| FOCUS38120.fit | 3810  | 0    | 0     |
| FOCUS38320.fit | 3830  | 0    | 0     |
| FOCUS38520.fit | 3850  | 0    | 0     |
| FOCUS38720.fit | 3870  | 0    | 0     |
| FOCUS38920.fit | 3890  | 0    | 0     |
| FOCUS39120.fit | 3910  | 0    | 0     |
| FOCUS39320.fit | 3930  | 0    | 0     |
| FOCUS39520.fit | 3950  | 0    | 0     |
| FOCUS39720.fit | 3970  | 0    | 0     |
| FOCUS39920.fit | 3990  | 0    | 0     |
| FOCUS40120.fit | 4010  | 0    | 0     |
| FOCUS40320.fit | 4030  | 0    | 0     |
| FOCUS40520.fit | 4050  | 0    | 0     |
| FOCUS40720.fit | 4070  | 0    | 0     |
| FOCUS40920.fit | 4090  | 0    | 0     |
| FOCUS41120.fit | 4110  | 0    | 0     |
| FOCUS41320.fit | 4130  | 0    | 0     |
| FOCUS41520.fit | 4150  | 0    | 0     |
| FOCUS41720.fit | 4170  | 0    | 0     |
| FOCUS41920.fit | 4190  | 0    | 0     |
| FOCUS42120.fit | 4210  | 0    | 0     |
| FOCUS42320.fit | 4230  | 0    | 0     |
| FOCUS42520.fit | 4250  | 0    | 0     |
| FOCUS42720.fit | 4270  | 0    | 0     |
| FOCUS42920.fit | 4290  | 0    | 0     |
| FOCUS43120.fit | 4310  | 0    | 0     |
| FOCUS43320.fit | 4330  | 0    | 0     |
| FOCUS43520.fit | 4350  | 0    | 0     |
| FOCUS43720.fit | 4370  | 0    | 0     |
| FOCUS43920.fit | 4390  | 0    | 0     |
| FOCUS44120.fit | 4410  | 0    | 0     |
| FOCUS44320.fit | 4430  | 0    | 0     |
| FOCUS44520.fit | 4450  | 0    | 0     |
| FOCUS44720.fit | 4470  | 0    | 0     |
| FOCUS44920.fit | 4490  | 0    | 0     |
| FOCUS45120.fit | 4510  | 0    | 0     |
| FOCUS45320.fit | 4530  | 0    | 0     |
| FOCUS45520.fit | 4550  | 0    | 0     |
| FOCUS45720.fit | 4570  | 0    | 0     |
| FOCUS45920.fit | 4590  | 0    | 0     |
| FOCUS46120.fit | 4610  | 0    | 0     |
| FOCUS46320.fit | 4630  | 0    | 0     |
| FOCUS46520.fit | 4650  | 0    | 0     |
| FOCUS46720.fit | 4670  | 0    | 0     |
| FOCUS46920.fit | 4690  | 0    | 0     |
| FOCUS47120.fit | 4710  | 0    | 0     |
| FOCUS47320.fit | 4730  | 0    | 0     |
| FOCUS47520.fit | 4750  | 0    | 0     |
| FOCUS47720.fit | 4770  | 0    | 0     |
| FOCUS47920.fit | 4790  | 0    | 0     |
| FOCUS48120.fit | 4810  | 0    | 0     |
| FOCUS48320.fit | 4830  | 0    | 0     |
| FOCUS48520.fit | 4850  | 0    | 0     |
| FOCUS48720.fit | 4870  | 0    | 0     |
| FOCUS48920.fit | 4890  | 0    | 0     |
| FOCUS49120.fit | 4910  | 0    | 0     |
| FOCUS49320.fit | 4930  | 0    | 0     |
| FOCUS49520.fit | 4950  | 0    | 0     |
| FOCUS49720.fit | 4970  | 0    | 0     |
| FOCUS49920.fit | 4990  | 0    | 0     |
| FOCUS50120.fit | 5010  | 0    | 0     |
| FOCUS50320.fit | 5030  | 0    | 0     |
| FOCUS50520.fit | 5050  | 0    | 0     |
| FOCUS50720.fit | 5070  | 0    | 0     |
| FOCUS50920.fit | 5090  | 0    | 0     |
| FOCUS51120.fit | 5110  | 0    | 0     |
| FOCUS51320.fit | 5130  | 0    | 0     |
| FOCUS51520.fit | 5150  | 0    | 0     |
| FOCUS51720.fit | 5170  | 0    | 0     |
| FOCUS51920.fit | 5190  | 0    | 0     |
| FOCUS52120.fit | 5210  | 0    | 0     |
| FOCUS52320.fit | 5230  | 0    | 0     |
| FOCUS52520.fit | 5250  | 0    | 0     |
| FOCUS52720.fit | 5270  | 0    | 0     |
| FOCUS52920.fit | 5290  | 0    | 0     |
| FOCUS53120.fit | 5310  | 0    | 0     |
| FOCUS53320.fit | 5330  | 0    | 0     |
| FOCUS53520.fit | 5350  | 0    | 0     |
| FOCUS53720.fit | 5370  | 0    | 0     |
| FOCUS53920.fit | 5390  | 0    | 0     |
| FOCUS54120.fit | 5410  | 0    | 0     |
| FOCUS54320.fit | 5430  | 0    | 0     |
| FOCUS54520.fit | 5450  | 0    | 0     |
| FOCUS54720.fit | 5470  | 0    | 0     |
| FOCUS54920.fit | 5490  | 0    | 0     |
| FOCUS55120.fit | 5510  | 0    | 0     |
| FOCUS55320.fit | 5530  | 0    | 0     |
| FOCUS55520.fit | 5550  | 0    | 0     |
| FOCUS55720.fit | 5570  | 0    | 0     |
| FOCUS55920.fit | 5590  | 0    | 0     |
| FOCUS56120.fit | 5610  | 0    | 0     |
| FOCUS56320.fit | 5630  | 0    | 0     |
| FOCUS56520.fit | 5650  | 0    | 0     |
| FOCUS56720.fit | 5670  | 0    | 0     |
| FOCUS56920.fit | 5690  | 0    | 0     |
| FOCUS57120.fit | 5710  | 0    | 0     |
| FOCUS57320.fit | 5730  | 0    |       |

# The traditional approach

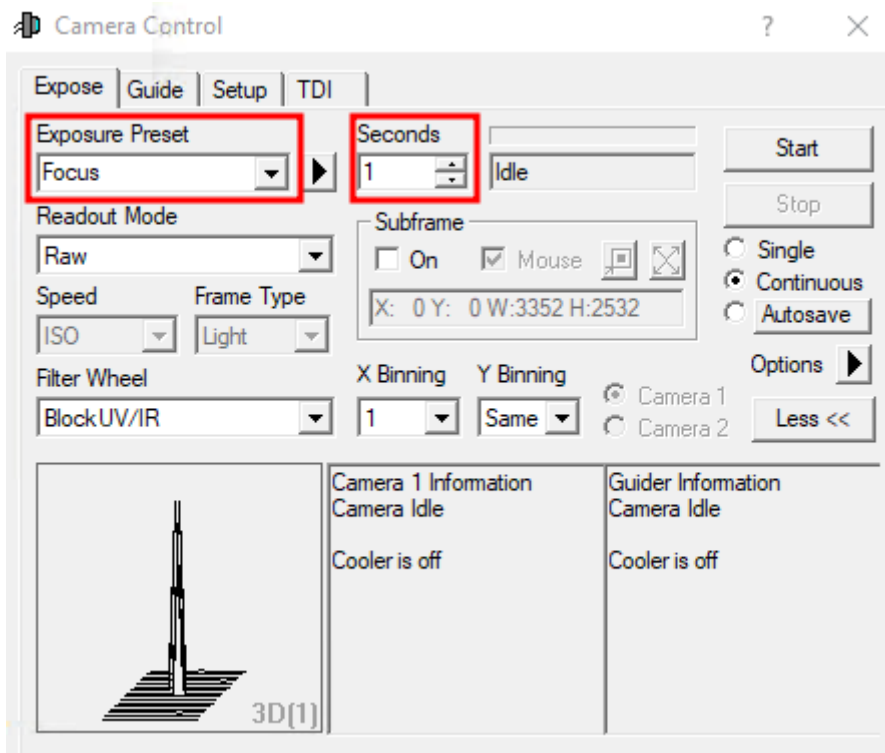


Replace images...

The traditional method of focusing involves looking at an area of the sky containing a large number of closely packed stars, such as a globular cluster. These conditions make it easy to judge the quality of the focus by determining the focus position that allows you to resolve most of those closely packed stars. *Maxim DL* is the most user-friendly software for the traditional approach, offering the most diagnostic tools by default. However, the most important quantities can also be found in the Statistics section of the Imaging tab in *N.I.N.A.* Here we focus on *Maxim DL*.

## Maxim DL main controls

In the **Exposure Tab** of the **Camera Control** window (see below), select Focus in the **Exposure Preset** drop-down menu (see below). In this preset many settings, important for focusing, are already pre-selected. In the examples shown below the exposure time (Seconds) is set to one second, this must be adjusted according to the object used for focusing.

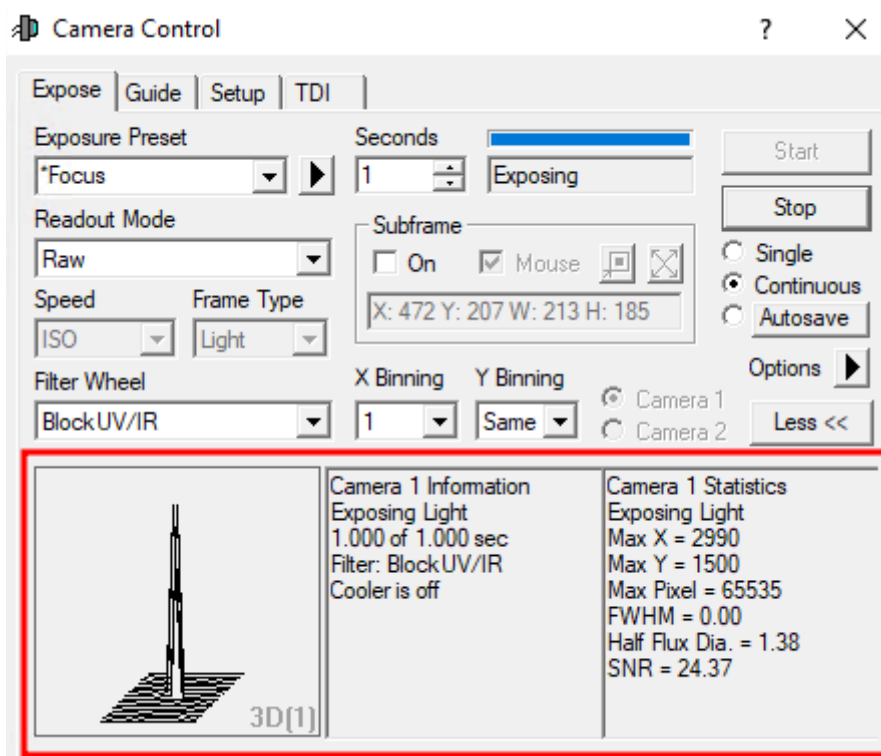


After a click on Start images are continuously taken and displayed. Now the telescope can be focused by means of *PWI4* or the hand terminal of the EFA. To find the coarse focus, it is recommended to first approach a bright star and to focus in such a way that the diffraction ring disappears. Rough values for the focus with the different instruments and eyepieces can be found in the table above.

In order to further optimize the focus, a globular cluster can be observed. The low angular distance

between the stars in a globular cluster facilitates very good focusing results, since the Airy discs of the individual stars can only be separated with a very well focused telescope. An optimally focused telescope operates with a seeing limited resolution, which for our site is often larger than 2". This is significantly worse than the diffraction limited resolution of our telescope, which is 0.3". The [Rayleigh criterion](#) describes the theoretical limit at which two Airy discs can be recognized as separated light sources.

The lower 3 panels of the **Camera Control** window can display various information about the connected cameras as well as statistical information about the images. To switch between the different display modes, you can simply right-click in one of these panels. The right and middle panels are reserved for the cameras, while the left panel can display graphics that show qualitative information about the focus. If no guiding camera is used, the following settings are recommended: left: 3D Profile or FWHM/time, middle: Camera 1 Info and right: Camera 1 Stats.



The information from the left and right panel is derived from the brightest star in the field of view. The 3D Profile is a 3D view of the image of this star, with the intensity being the third axis. FWHM/time shows the Full-width Half Maximum (FWHM) of this star as a function of time. The right panel shows the following information: the position of the brightest pixel in X and Y direction, the value of this pixel, the FWHM of the brightest star, the Half Flux Diameter (HFD) of this star, and the Signal to Noise Ratio (SNR).

As an indication of a good focus, the value of the brightest pixel, the FWHM, the HFD and the SNR can be used. The higher the value in the brightest pixel, the better the SNR, the smaller the FWHM and HFD, the better the focus. It is therefore important to optimize these values during the focusing process. In this respect, the different graphics in the lower left panel can be very helpful, since those illustrate the temporal course.

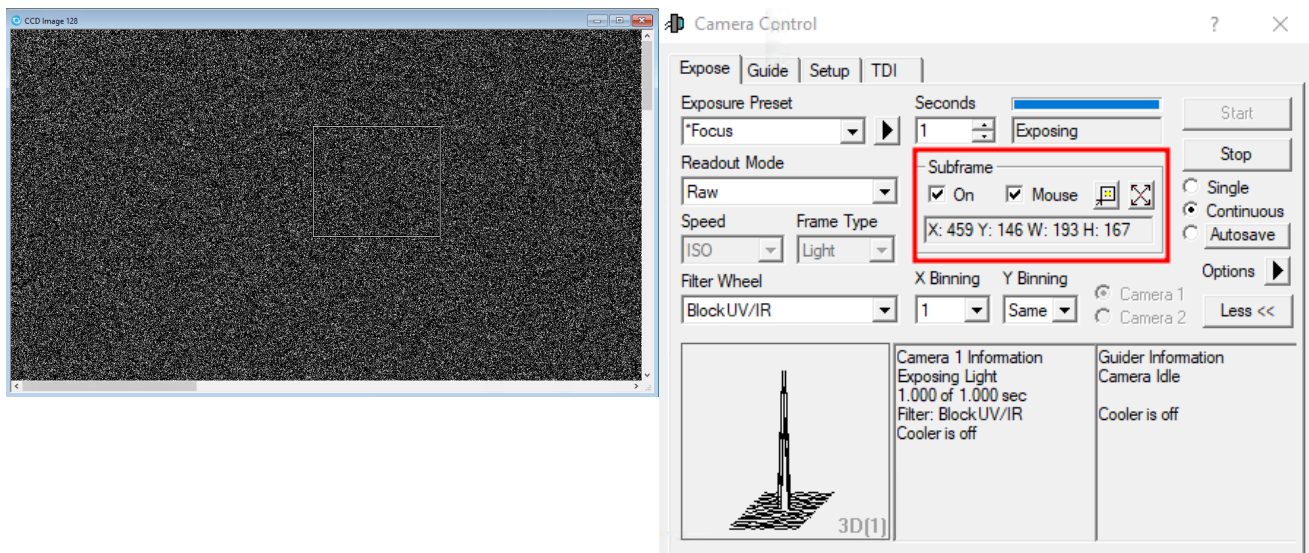
The middle panel again summarizes the current information about the camera, e.g. if a image acquisition is currently running, which exposure time is set, the selected filter, if the cooling is running and if so, the current and target temperature of the sensor.

## Maxim DL Subframes

Subframes offer the possibility to significantly speed up the process of finding the optimal settings for the focus. By reading out only a small area of the CCD, which can be selected by the user, the readout time and also the download time can be greatly reduced.

The subframe mode can be activated by clicking on On in the **Subframe** section. Now the area to be read out can either be entered directly or defined by mouse. For the former you have to click on the line with X: Y: W: H: . In the window that opens, you can then specify the X and Y values of the start pixel, as well as the width and height of the box to be read. If the option Mouse is activated, a box can also be dragged directly around a star or a group of stars with the mouse. Of course you have

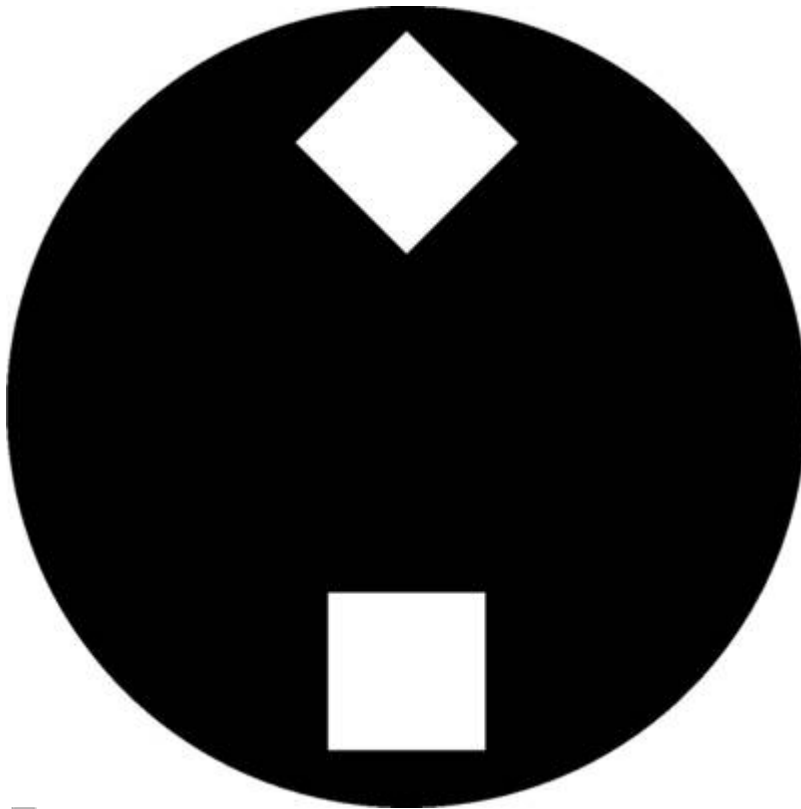
to take a picture first 😊 The box can also be moved by clicking on the border and resized by clicking on the corners. **Attention:** If the focus series is already running, it must be stopped and restarted for the subframe mode to take effect.



## Aperture masks

Aperture masks have proven their worth in astrophotography as focusing aids and for testing the imaging quality of telescopes. They use the physical principle of diffraction to allow an exact

determination of the focus position of a telescope. Aperture masks with two apertures are usually called Scheiner apertures, whereas aperture masks with more than two apertures are called Hartmann apertures. Aperture masks are attached in front of the telescope's aperture.

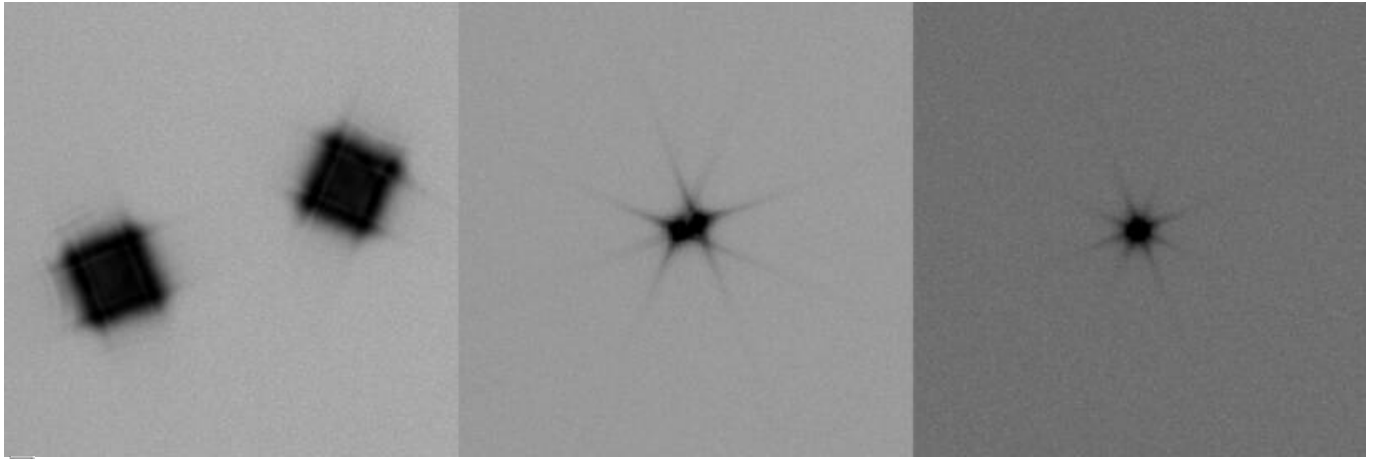


Scheiner mask, like it is available for the lab course

For finding the focus, the telescope needs to be pointed to a bright light source (e.g. a bright star). Since the light that passes through the different apertures of the pinhole passes the planes in front and behind the focal plane at different points, several images of the light source can be seen if the telescope is defocused. By adjusting the focus, the multiple images can be overlapped and finally merged into one point source. Once this has been achieved, one can assume that the optimal focus has been found.

### **Scheiner mask**

For some of our telescopes, we have Scheiner masks with rectangular apertures, where the apertures are rotated by  $45^\circ$  against each other (see the right figure). The advantage of this kind of Scheiner masks is that the images of the object are superimposed with spikes, due to diffraction at the apertures. These spikes are shifted by  $45^\circ$  against each other corresponding to the rotation of the apertures. The spikes are a good aid for focusing, since the spikes form a symmetric “starlet” only for a well focused telescope. A template of the described Scheiner diaphragm (A2 format) for the C14 from Celestron can be found [here](#).



Test exposure of a bright star employing a Scheiner mask (improved focus from left to right)

## Bathinov masks

A Bahtinov mask contains three sets of slits oriented at different angles, which produce a characteristic pattern of three diffraction spikes when observing a star. Two spikes remain relatively fixed, while the central spike shifts position depending on the focus: if the telescope is focused too far in or out, the central spike moves sideways. By adjusting the focus until this spike lies exactly midway between the other two, the optimal focus point is reached.



Add images...

From:

<https://polaris.astro.physik.uni-potsdam.de/wiki/> - **OST Wiki**

Permanent link:

[https://polaris.astro.physik.uni-potsdam.de/wiki/doku.php?id=en:ost:fokus\\_new&rev=1773143518](https://polaris.astro.physik.uni-potsdam.de/wiki/doku.php?id=en:ost:fokus_new&rev=1773143518)

Last update: **2026/03/10 11:51**

