

# CCDs Setup

## STF-8300M

### First light



Wind turbines near Golm

One of the buildings in the Wissenschaftspark Golm

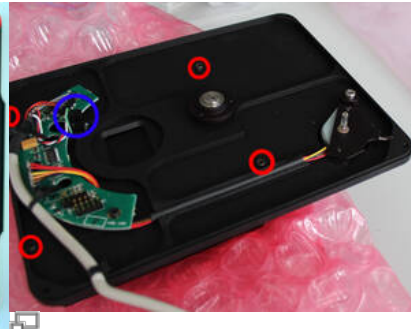
### Assembling the filter wheel and the OAG

The goal of this task is to mount or dismount the filter wheel and the off-axis guider (OAG) to the CCD. The procedure in short:

1. to open the camera, loose the screws from the cover, see Figure 1.
2. open the case of the filter wheel and mount the backplate of the filter wheel (along with the mechanics and the electronics) to the CCD, see Figure 2.
3. insert the individual filters and the spacer rings in the filter holder and mount the cover panel on top, see Figure 3. and 4.
4. attach the filter holder to the backplate of the filter wheel (be careful with the sensor for the filter position), see Figure 2. and 4.
5. screw the cover of the filter wheel to the backplate of the filter wheel, see Figure 5.
6. attach the OAG to the filter wheel, see Figure 6.
7. adjust the mirror of the OAG (the mirror is kept in place by means of a small lateral screw), see Figure 6.
8. attach the top cover and the T2 adapter to the OAG, see Figure 7.
9. connect the cable of the filter wheel to the STF-8300, see Figure 8.
10. fit the ST-i in the OAG, see Figure 9.
11. READY 😊



1. Cover of the STF-8300



2. Backplate of the filter wheel mounted to the SFT-8300 (the red circles mark the corresponding screws, the blue circle marks the sensor for the filter wheel position)



3. Filter holder with filters and spacer rings



4. Filter wheel with inserted filter holder (the red circles mark the screws that attach the cover to the filter holder, the blue circles mark the screws that attach the filter holder to the backplate of the filter wheel)



5. Filter wheel with the cover



6. Filter wheel with the OAG



7. Filter wheel with the OAG and T2 adapter



8. Side view of the STF-8300



9. STF-8300 with filter wheel, OAG, and ST-i

## ST-8/7

### Assembling the filter wheel

The goal of this task is to mount or dismount the filter wheel to the CCD. The operation is demonstrated by the following pictures of the ST-8. The procedure in short:

1. Open the camera. Loose the screws from the cover, see Figure 1.

2. Open the case of the filter wheel and mount the empty cover of the filter wheel to the CCD, see Figure 2.
3. Now attach the filter wheel and the case of the adaptive optics module (AO), see Figure 3.
4. Attach the deflecting mirror and AO case, see Figure 4.
5. Connect the cables for:
  - The AO control (flat ribbon cable)
  - The power supply
6. Ready 😊

<columns 100% 33% 33% 33%>



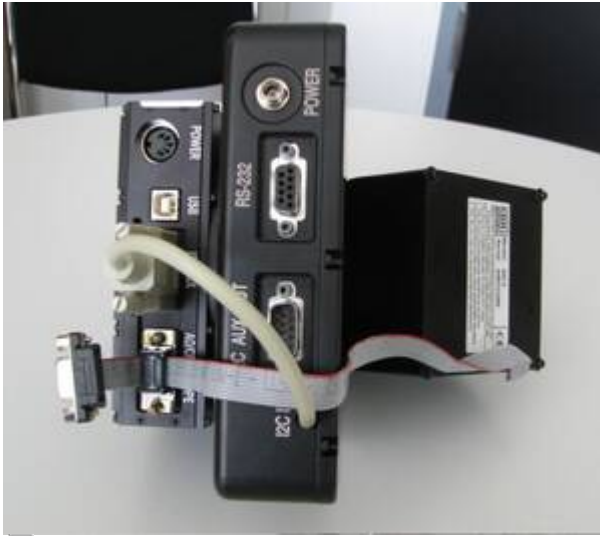
1: ST8 and cover

<newcolumn>



3: Mount the filter wheel

<newcolumn>



5: Connect the cables

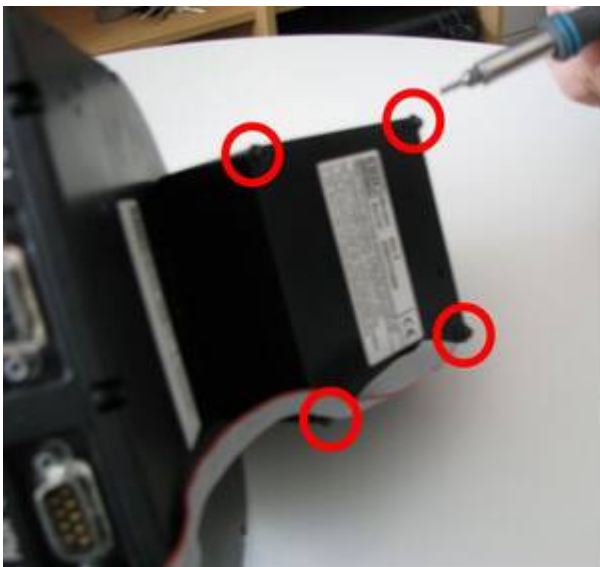
</columns>

<columns 100% 33% 33% 33%>



2: Case and filter wheel

<newcolumn>





#### 4: Adaptive Optics

<newcolumn>



#### 6: Complete

</column>

From:

<https://polaris.astro.physik.uni-potsdam.de/wiki/> - **OST Wiki**

Permanent link:

<https://polaris.astro.physik.uni-potsdam.de/wiki/doku.php?id=en:ost:ccd:setup&rev=1477267809>

Last update: **2016/10/24 00:10**

