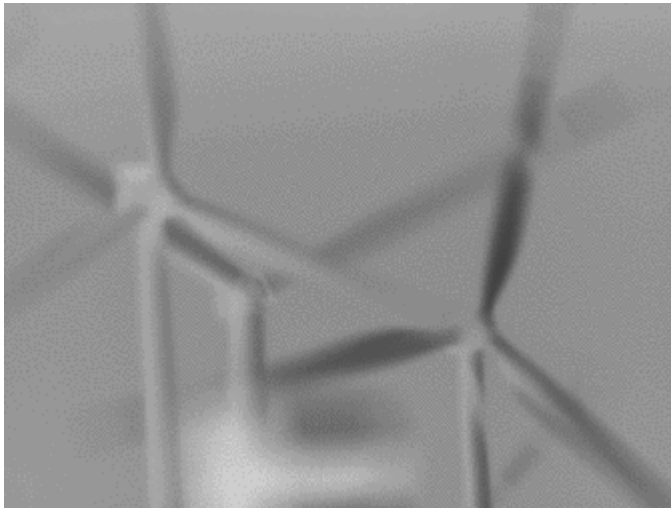


CCDs Setup

STF-8300M

First light



First light, Wind wheels in Golm



One of the buildings in the Wissenschaftspark Golm

ST-8/7

Assembling the filter wheel

The goal of this task is to mount or dismount the filter wheel to the CCD. The operation is demonstrated by the following pictures of the ST-8. The procedure in short:

1. Open the camera. Loose the screws from the cover, see Figure 1.
2. Open the case of the filter wheel and mount the empty cover of the filter wheel to the CCD, see Figure 2.

3. Now attach the filter wheel and the case of the adaptive optics module (AO), see Figure 3.
4. Attach the deflecting mirror and AO case, see Figure 4.
5. Connect the cables for:
 - The AO control (flat ribbon cable)
 - The power supply
6. Ready 😊

<columns 100% 33% 33% 33%>



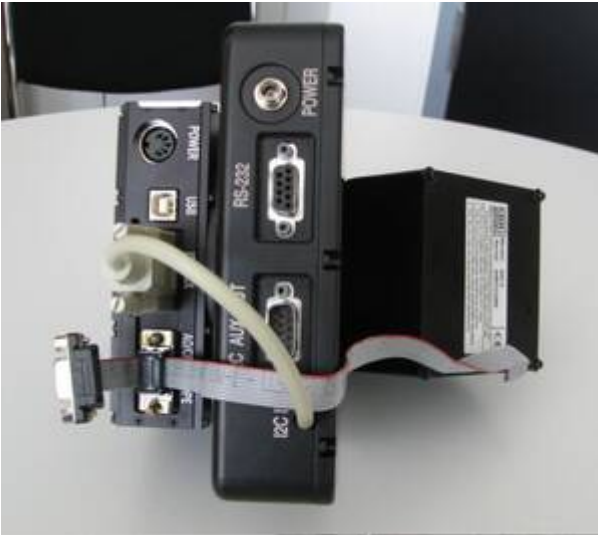
1: ST8 and cover

<newcolumn>



3: Mount the filter wheel

<newcolumn>



5: Connect the cables

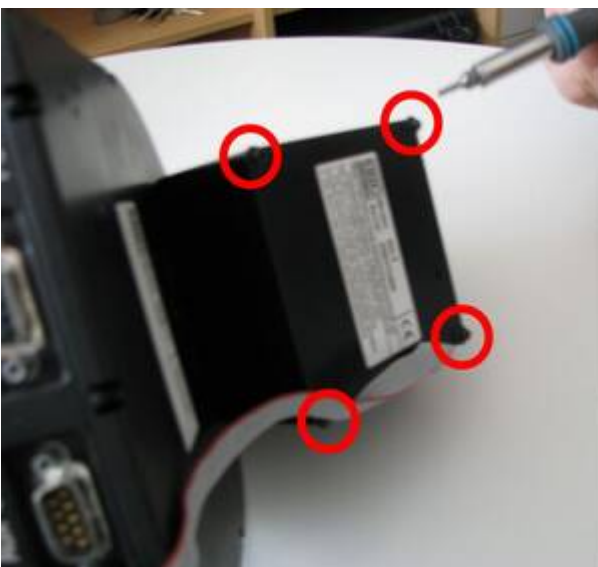
</columns>

<columns 100% 33% 33% 33%>



2: Case and filter wheel

<newcolumn>



4: Adaptive Optics

<newcolumn>



6: Complete

</columns>

From:

<https://polaris.astro.physik.uni-potsdam.de/wiki/> - **OST Wiki**

Permanent link:

<https://polaris.astro.physik.uni-potsdam.de/wiki/doku.php?id=en:ost:ccds:setup&rev=1416094502>

Last update: **2014/11/15 23:35**

