



**This page is not fully translated, yet. Please help completing the translation.**

*(remove this paragraph once the translation is finished)*

# Maxim DL

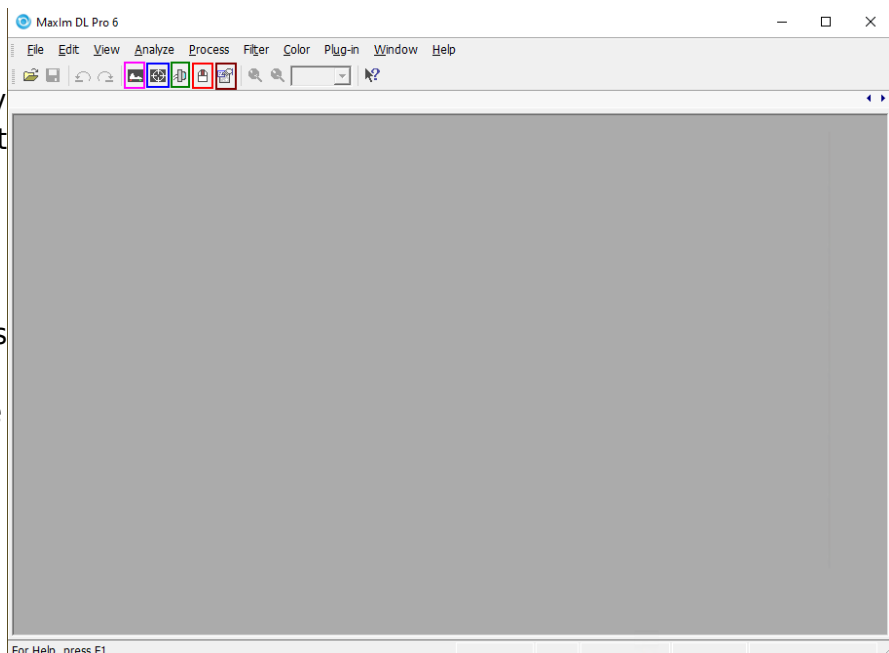
Maxim DL is currently the main interface for controlling the observatory and cameras as well as for performing the observations.

## Interface und grundlegende Bedienung

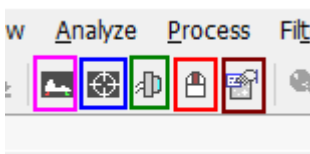
Maxim DL can be started most easily by double-clicking on the icon Maxim DL 6 on the desktop or via the taskbar.

### Main window

The help, picture and the header or bottom, which shows the display information of Maxim DL, the most important buttons. The header is highlighted. The red button opens the **Observatory** while the **Panel**, which contains, for example, for this display the controls for the scope. The green button opens the **Camera Control Panel**, which provides scaling controls for the cameras. These two windows will be discussed in detail below.



Main window of Maxim DL

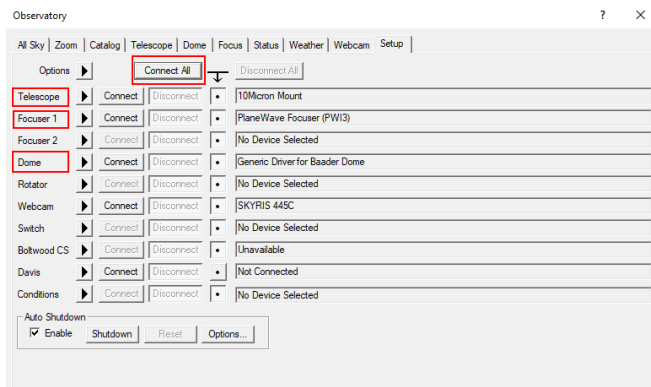


### Observatory Panel

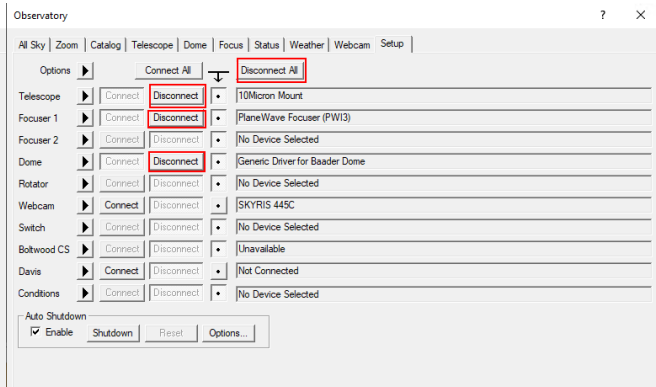
The **Observatory** control window has different tabs to control the different parts of the observatory. You can move to objects by entering their coordinates, selecting them from a catalog or marking them on an all-sky map. The dome can be opened, closed, and if necessary moved manually. Furthermore, the telescope can be moved manually via this control window and parked again after the observations are finished.

## Setup tab

The setup tab is used to establish the connection to the telescope, the dome, and the focuser. You can click on the **Connect** button behind the respective entry or on **Connect All** to establish the connection to all components simultaneously. All other entries like **Rotator** are not relevant for us.



Setup tab - Nothing connected

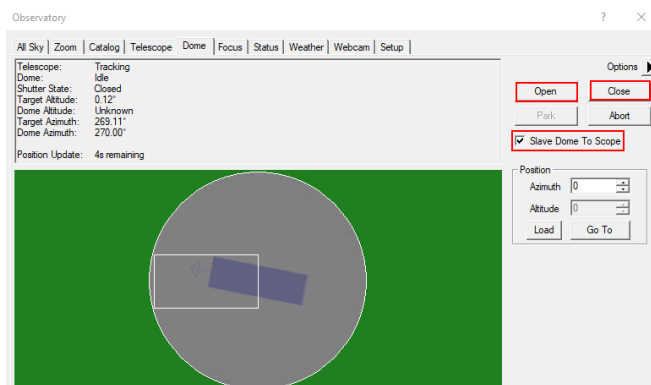


Setup tab - Telescope, dome, and focuser connected

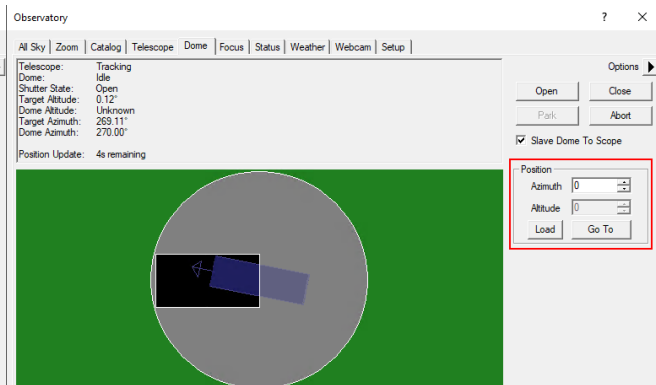
In order to disconnect the devices after the observation, you can click on the individual **Disconnect** buttons or on **Disconnect All**.

## Dome tab

The **Open** and **Close** buttons can be used to open and close the dome. The dome always opens or closes completely. It must be ensured that the **Slave Dome To Scope** option is activated, otherwise the dome will not follow the telescope. Unfortunately, this option turns off every time the dome is opened, closed, or the telescope is parked.



Dome closed



Dome open

The dome can be moved manually via the functions in the **Position** box. This is especially useful when the telescope and the slit are not correctly aligned and the dome needs to be recalibrated. On the example shown above, the alignment is not optimal but still so good that the telescope does not look at the dome.

## Telescope tab

The telescope tab shows in the upper left area where the telescope is currently looking and which action it is currently performing. The right ascension and declination are displayed for the current date as well as for the standard epoch J2000. Furthermore, the altitude above the horizon and the azimuth are displayed. In the example shown below, the telescope is tracking and apart from that is inactive.



The buttons in the **Nudge** section can be used to move the telescope manually, with the step size selected via the drop-down menus. Each movement can again be aborted via the **Abort** button.

In the **Target Coordinates** area you can enter the right ascension and declination of an object and slew to it via the **Go To** button. The **Zoom To** button switches to the Zoom tab, which displays a map of the sky at the respective coordinates.

The **Park** button in the **Mount** area can be used to park the telescope after the observation.

## Catalog tab

Using the Catalog tab, the built-in catalogs can be searched for objects. To do this, first select a category from the **Category** drop-down menu. You can choose between Stars, Deep Space and Solar System. From the drop-down menu **Object ID** either the object directly or a catalog can be selected. In the latter case the catalog number of the object, or only a part of it, can be entered (see example below). After a click on **Search** a list of possible objects is displayed. The desired object can be selected from this list. With a click on **Go To** the object is approached.

Observatory

All Sky | Zoom | Catalog | Telescope | Dome | Focus | Status | Weather | Webcam | Setup

Search ID

Object ID Search

Category

Deep Space

Object ID

NGC 381

Search

Cancel

Search Region

Criterion

Min

Max

Add

Edit

Remove

Keypad

Options

Zoom To

Sync

Go To

Abort

Search Results: found 11 objects

ID1	ID2	Type	RA	Dec	Mag	Size	HA	Alt	Az	Sle...
NGC381		Open Cluster	01h 08m 18s	61° 35' 00"	9.3	7'	01h 51m 17s	72.5°	312.8°	77.6°
NGC3810	PGC3...	Galaxy	11h 40m 59s	11° 28' 11"	11.3	4' x 3'	15h 18m 52s	-13.3°	50.2°	126.9°
NGC3812	PGC3...	Galaxy	11h 41m 08s	24° 49' 19"	13.6	2' x 2'	15h 18m 42s	-1.6°	43.9°	122.4°
NGC3811	PGC3...	Galaxy	11h 41m 17s	47° 41' 26"	12.9	2' x 2'	15h 18m 32s	18.6°	32.8°	111.2°
NGC3813	PGC3...	Galaxy	11h 41m 18s	36° 32' 46"	12.3	2' x 1'	15h 18m 31s	8.8°	38.3°	117.1°
NGC3814	PGC3...	Galaxy	11h 41m 28s	24° 48' 18"	15.7	0' x 0'	15h 18m 22s	-1.6°	43.8°	122.4°
NGC3815	PGC3...	Galaxy	11h 41m 39s	24° 47' 59"	14.1	2' x 1'	15h 18m 10s	-1.6°	43.8°	122.3°
NGC3816	PGC3...	Galaxy	11h 41m 48s	20° 06' 11"	13.5	2' x 1'	15h 18m 02s	-5.8°	45.9°	124.1°
NGC3817	PGC3...	Galaxy	11h 41m 53s	10° 18' 14"	14.2	1' x 1'	15h 17m 58s	-14.5°	50.6°	127.0°
NGC3818	PGC3...	Galaxy	11h 41m 57s	-06° 09' 22"	12.7	2' x 1'	15h 17m 54s	-28.7°	59.5°	129.2°

Zoom tab

In the zoom tab, the sky map around the selected object is displayed. Via the option button (arrow) on the right and via the context menu, many options are accessible, such as the zoom level. If one clicks with the right mouse button on any point of the map, one can slew the telescope to this point via Slew to Mouse Position. If you click on an object, it can be selected directly. In the example below the corresponding option is Slew tp 119 Tau.

Observatory

All Sky | Zoom | Catalog | Telescope | Dome | Focus | Status | Weather | Webcam | Setup

Options

Sleaved to Telescope

Moving Scope

View RA: 05h 35m 40s Mouse RA: 05h 32m 37s 119 Tau/HIP25945 (Star)

View Dec: 23° 32' 46" Mouse Dec: 18° 47' 42" RA: 05h 32m 13s

View FOV: 10" Mouse Az: 52° 57' 26" Dec: 18° 35' 33"

Rotator PA: 94° Mouse Az: 147° 36' 15" Mag: 4.3

Options

Sleaved to Telescope

Moving Scope

View RA: 05h 35m 40s Mouse RA: 05h 32m 21s 119 Tau/HIP25945 (S

View Dec: 23° 32' 46" Mouse Dec: 18° 44' 04" RA: 05h 32m 13s

View FOV: 10" Mouse Az: 53° 07' 29" Dec: 18° 35' 33"

Rotator PA: 94° Mouse Az: 148° 40' 15" Mag: 4.3

Options

Sleaved to Telescope

Slew to 119 Tau

Slew to Mouse Position

Confirm Slew

Expose After Slew

Abort Slew

Find Scope Position

Sync to Mouse Position...

Move Rotator...

Sync Rotator to Solved Image

Overlay Image

Auto Overlay Solved Images

Clear Overlay Image

Zoom

Density

FOV Indicator

Show Labels

Set Label Font

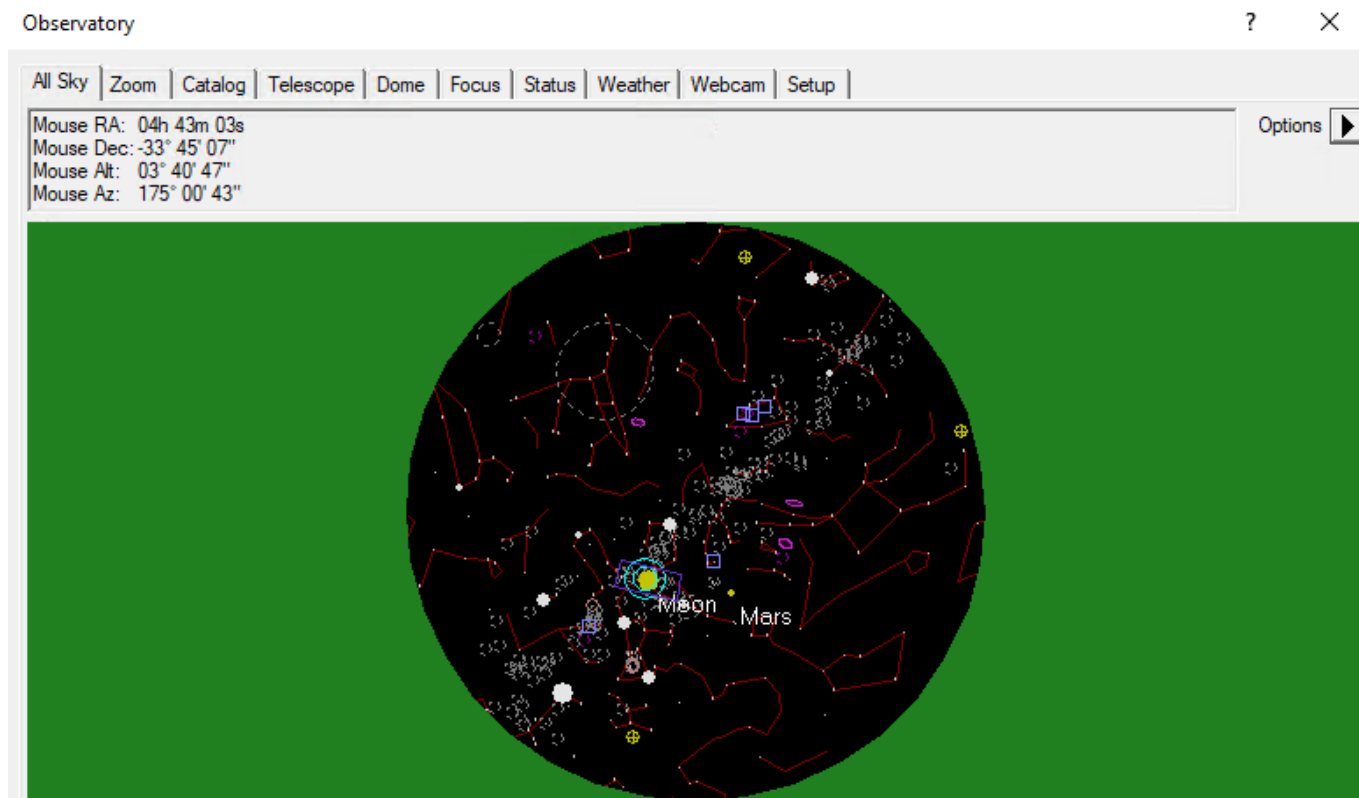
Flip

All Sky tab

The All Sky tab shows the current sky. By right-clicking, you can zoom into any area. When you do that you will be redirected to the zoom tab. The option button (arrow) on the right provides access to many setting options.

<https://polaris.astro.physik.uni-potsdam.de/wiki/>

Printed on 2025/08/30 13:30

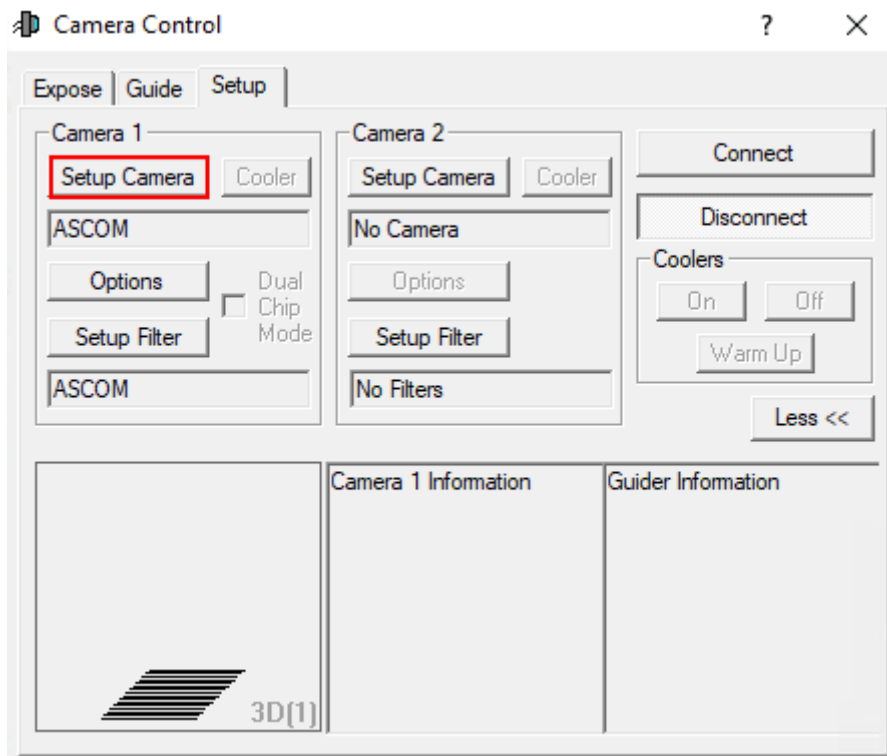


## Camera Panel

The **Camera Control** window can be used to control the cameras and take the images.

## Setup tab

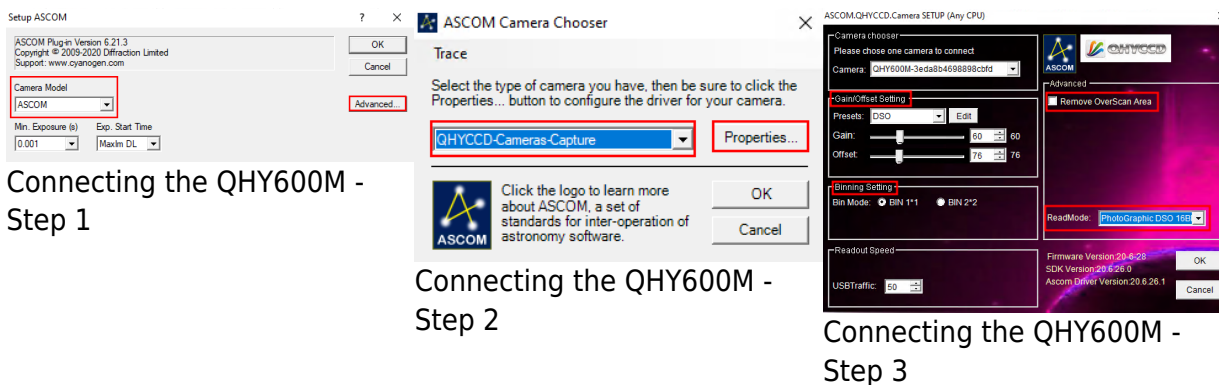
As the name suggests, this window is used to connect the cameras to Maxim DL. This is done slightly differently for each camera manufacturer. Here, we will discuss the procedure for QHYCCD cameras and for SBIG cameras, since these are the cameras we primarily use. For each camera model, the appropriate driver must be selected. This must be done for the actual camera as well as for the filter wheel. If a guiding camera is to be used, it must also be connected here. Normally the guiding camera is connected as **Camera 2**, while the main camera is connected as **Camera 1**.



The first thing to do, regardless of the manufacturer, is to click on **Setup Camera**.

### Connecting QHYCCD cameras:

In the window that opens, select ASCOM from the **Camera Model** drop-down menu and then click **Advanced...** (step 1). After that another window will open. In this window, select QHYCCD-Cameras-Capture from the dropdown menu and click on **Properties...** (step 2). After that, the settings menu for the **ASCOM** driver for the QHYCCD cameras opens. **ASCOM** is the basic interface through which many of the observatory's operations are controlled.



Connecting the QHY600M -  
Step 1

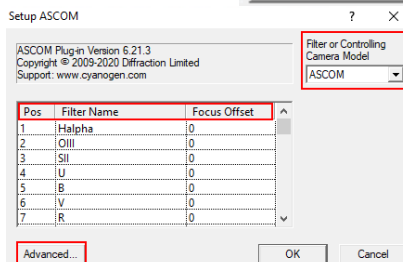
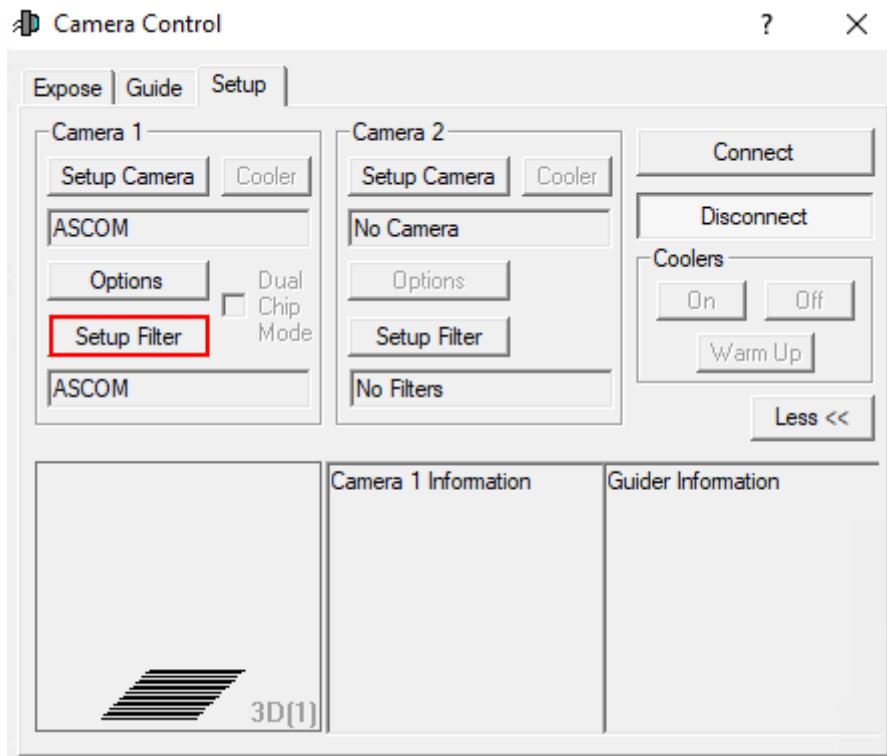
Connecting the QHY600M -  
Step 2

Connecting the QHY600M -  
Step 3

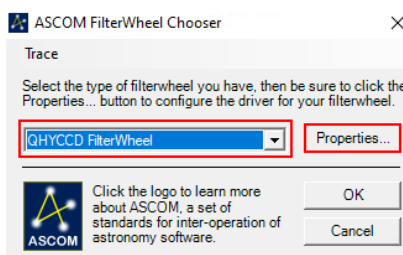
In the last step (3) all important settings for the **ASCOM** driver can now be configured. These include the readout mode, which can be selected from the **ReadMode** drop-down menu. The following can be selected: PhotoGraphic DSO 16bit, High Gain Mode 16bit, Extend Fullwell Mode and Extend Fullwell 2CMS. Under **Gain/Offset Setting** the **Gain** and **Offset** can then be set. These settings can be saved as **Preset**. In addition, the **Remove Overscan Area** option should also be activated for scientific images. Afterwards, all three windows can be closed by clicking **OK**.

### Connecting QHYCCD filter wheels:

To connect a filter wheel, first click on **Setup Filter**.

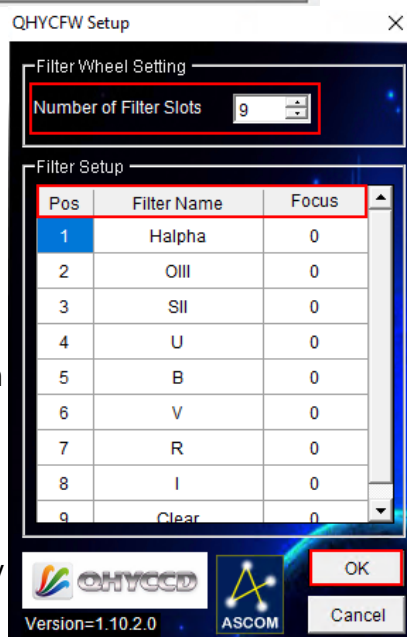


Connecting the CFW-3 filter wheel - Step 1



Connecting the CFW-3 filter wheel - Step 2

In the first step you have to select ASCOM from the dropdown menu **Filter or Controlling Camera Model**. Then click on **Advanced...**. In the window that opens, select QHYCCD FilterWheel from the drop-down menu and then click **Properties...** (step 2). Thereupon another window opens, which shows the possible driver settings. The settings in this window usually have to be made only once. You have to select the **Number of Filter Slots** (in our case 9) and the respective filter names as well as any corrections for the focus (step 3). Afterwards all three windows have to be confirmed and closed by clicking **OK**.



Connecting the CFW-3 filter wheel - Step 3

**Connecting SBIG cameras:**

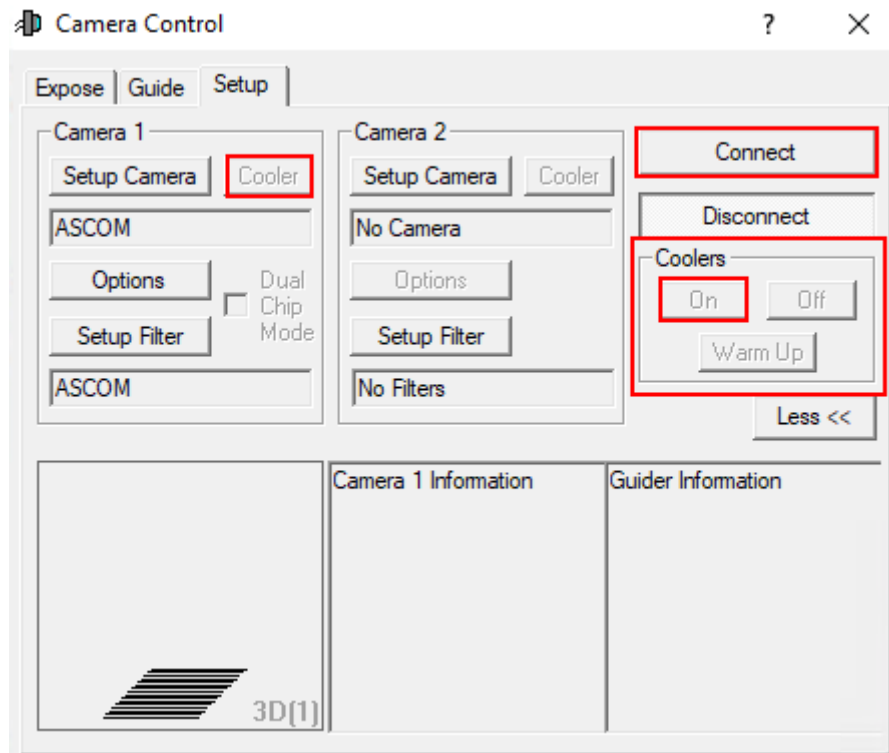
Still to come...

**Connecting SBIG filter wheels:**

Still to come...

## Final Step:

Now **Connect** has to be clicked. Then the cooling can be activated under **Coolers** and the target temperature can be set under **Cooler**.

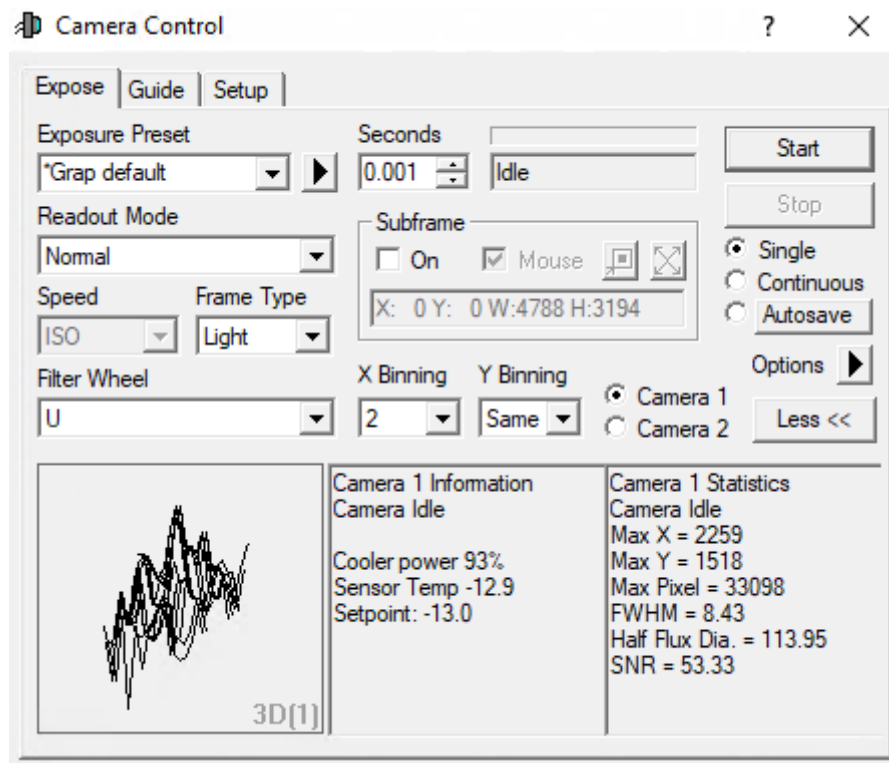


## Expose tab

In this tab you will find, on a small space, the most important settings regarding the recording of the images. Predefined setting sets can be found under **Exposure Preset**, where new ones can also be created. The most important setting is the exposure time (**Seconds**). To the right of this is the status information line, which shows what the camera is currently doing. In the example below the camera is idle.

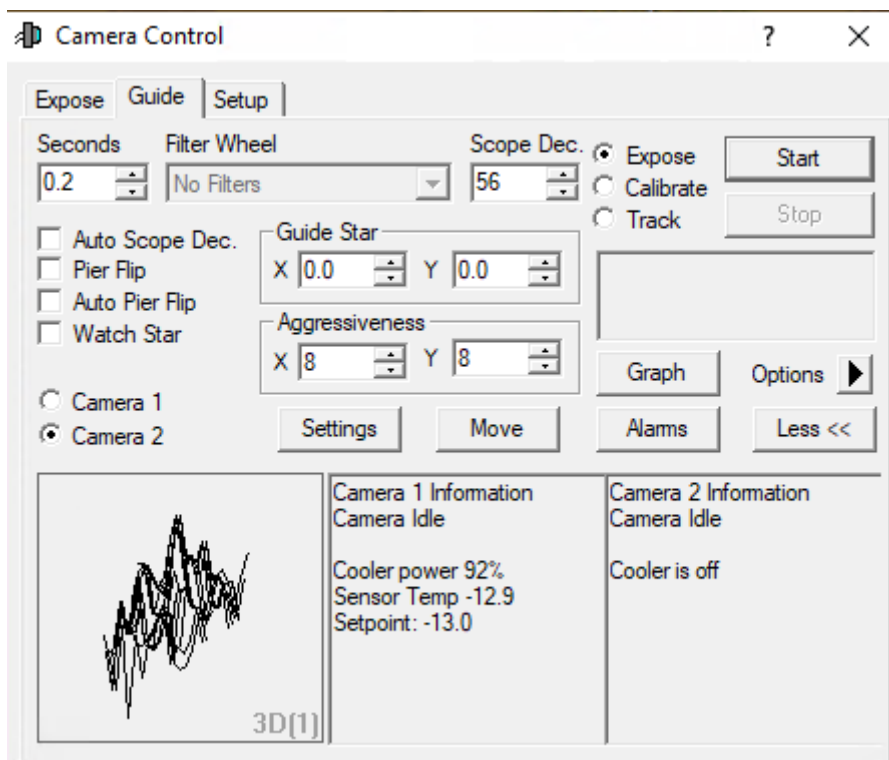
The filters can be found under **Filter Wheel**. The binning options are accessible via the two drop-down menus **X Binning** and **Y Binning**. Furthermore, the readout mode (**Readout Mode**) can be selected, which is important for the QHY600M. The basic operation modes are **Single**, **Continuous**, and **Autosave**. In the first mode only a single exposure is made, whereas in the last one entire [exposure series](#) can be made. In the **Continuous** mode, images are created and displayed one after the other. This mode is particularly suitable for [focusing](#). In the corresponding article, we also go into more detail about the lower three panels. Further options are accessible via **Options** (arrow button).





## Guide tab

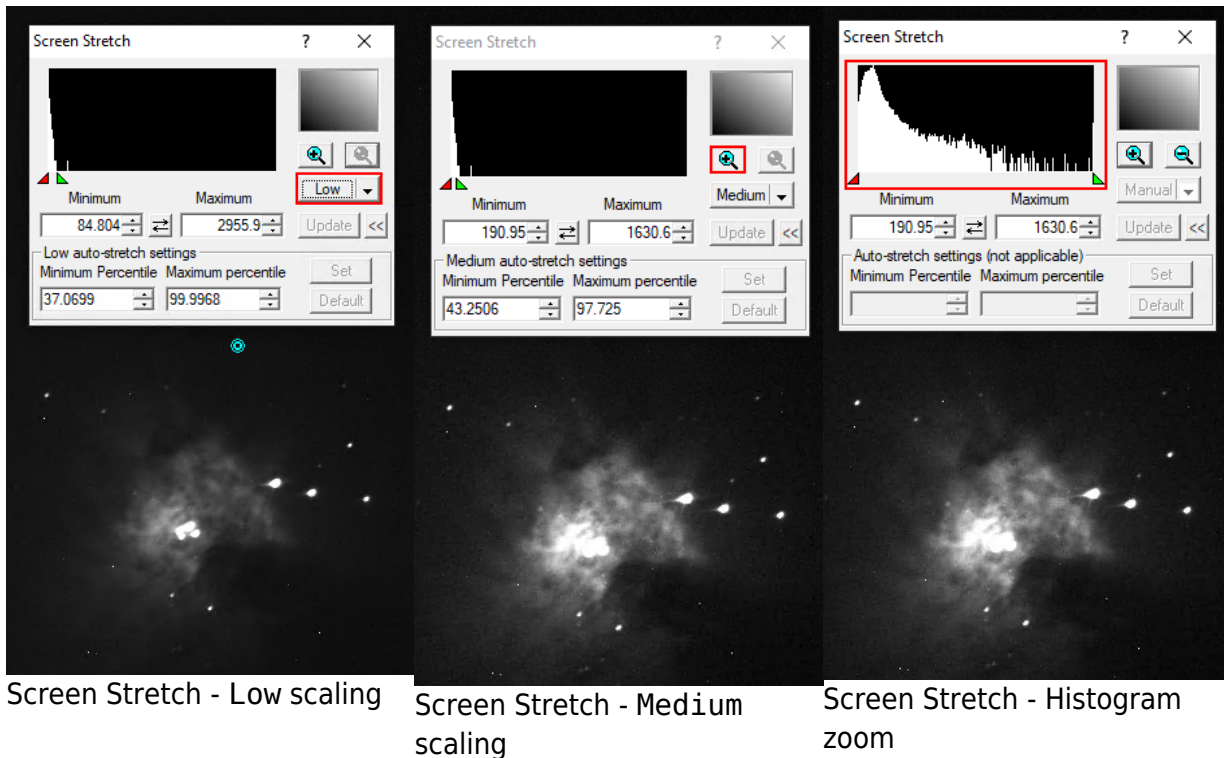
The Guide tab contains the most important settings for guiding the telescope. We will go into details in a [guiding how-to](#).



## Screen Stretch Panel

Via the **Screen Stretch Panel** the scaling of the images can be influenced. In the first image below,

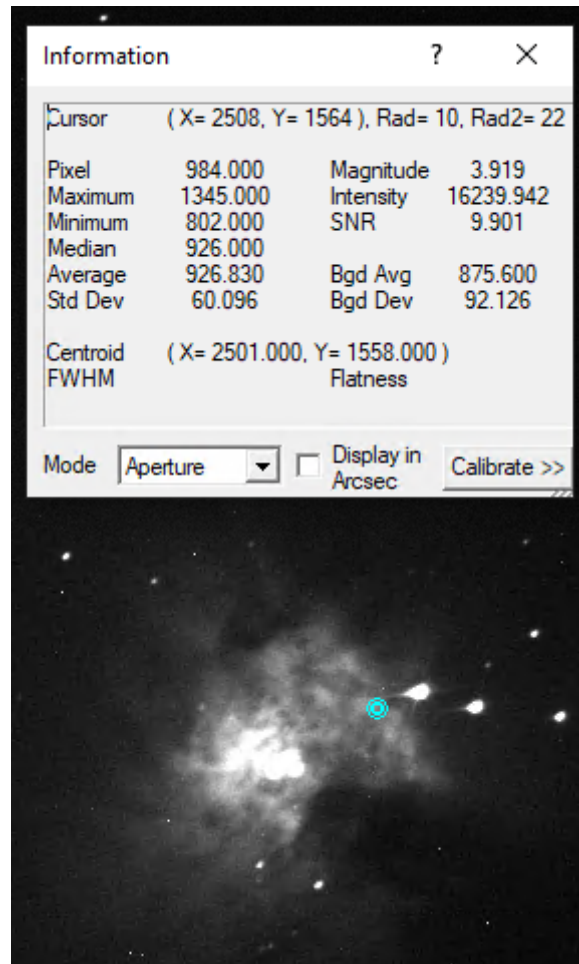
which shows M42, the scaling is set to **Low**. By increasing the scaling to **Medium** you will see much more details of M42. Many other helpful predefined scalings can be selected from the corresponding dropdown menu.



Clicking on the plus symbol in the upper right section of the panel zooms into the histogram shown in the upper left section. This allows you to fine-tune the scaling via the red and green triangles, where the red triangle defines the black level and the green triangle the white level. The same can be achieved using the **Minimum** and **Maximum** fields.

## Information Panel

The **Information Panel** is especially helpful to check if the image is overexposed and to find out which stars this may be due to. Here the values **Pixel** and **Maximum** are especially interesting for us. In the default Aperture mode the information is read from the cyan aperture shown on the image, which can be shifted e.g. to a bright star. If this is done, the signal-to-noise ratio (**SNR**) and the full-width-half-maximum (**FWHM**) are of interest as well. For our mostly uncalibrated images, values like the **Magnitude** are not relevant.



From:

<https://polaris.astro.physik.uni-potsdam.de/wiki/> - **OST Wiki**

Permanent link:

<https://polaris.astro.physik.uni-potsdam.de/wiki/doku.php?id=en:ost:ccds:maximdl&rev=1614455639>

Last update: **2021/02/27 19:53**

